

2005 Alpine Coach Limited



AMERICA'S PREMIUM MOTOR COACH

Western Recreational Vehicles, Inc.



AMERICA'S PREMIUM MOTOR COACH



ALPINE COACH MAKES LIFE EASIER...

1. Sharp® AQUOS Liquid Crystal Television (LC-TV) and high-definition (HDTV) satellite receiver is an available premium entertainment option.
2. Audio / Video components are neatly positioned, centrally located and simple to operate.
3. Power Management Controls - The Accu-Gauge® tank monitor readout pad, power inverter control and optional Hydro Hot™ system control are conveniently located and out of sight when not in use.
4. Carefree® Powervisors® are standard, offering push-button control for more convenient sun glare protection and driving comfort.
5. A no cost option, the Karadon® Solid Surface Dinette Table with single leg and wall mount provides a comfortable area for entertaining. Shown with optional Folding Dinette Chairs.
6. Model 40 FDS • Kenmore® Stacked Washer / Dryer with Item Shelf and Vintage Cherry Cabinetry options.

COVER PHOTO: MODEL 40 FDS • Brandywine Premium Exterior with A&E Power Pro® Awning with Wind Sensor option.





QUALITY & COMFORT: IT'S A TRADITION!

Like the strong foundation of our family owned business, Western Recreational Vehicles, Inc. has been building some of the toughest, most reliable Motor Coaches, Fifth-Wheels, Travel Trailers and Truck Campers for over three decades. We understand that tradition is the key to creating premium quality recreational vehicles year after year. We take pride in using state-of-the-art design and technology to build the luxurious Alpine Coach. Along with high quality and comfort, other top priorities include: safety, attention to detail, premium features and customer satisfaction.

Our Western RV family believes trust and experience go a long way. Our more than 33-year commitment to quality, comfort and reliability is a family tradition. So no matter where your journey takes you, trust our family to be there for your family.



The retractable fueling compartment is designed to eliminate the impact of accidental overfills and provide security for your fuel system. Also built into this handy area is a serviceable 7.5 kw Onan® Quiet Diesel generator.

MODEL 38 FDTS • Woodlands Premium Exterior.



Western Recreational Vehicles, Inc. is proud to introduce the new generation of Motor Coaches, the 2005 Alpine Coach - America's Premium Recreational Vehicle. We're passing on our tradition of first-class quality, comfort and convenience in every Alpine Coach.

2005 Alpine Coach Limited

MODEL 40 FDTs

Platinum Interior with Natural Maple Cabinetry, Solid Surface Dinette Table, 21.5 cu. ft. Amana® Residential Refrigerator, Flexsteel® Ultra-Leather Recliner, and Galley / Bath Area Polished Ceramic Tile options.







MODEL 40 FDQS • Brandywine Interior with Tuscan Maple Cabinetry, Solid Surface Dinette Table, Flexsteel® Euro Chair with Ottoman, Flexsteel® Ultra-Leather EZ Bed, Front Area Polished



Easy reading white background and backlit Actia® Smart Gauges monitor many driving functions and will display diagnostic codes and messages to aid in service and maintenance. Also shown with standard Smart Wheel®.



Pull-out dash drawer with cup holders and coach body function switches for an uncluttered cockpit.

FIRST-CLASS COMFORT

Even before you sit behind the wheel of an Alpine Coach, it's easy to see the first-class comfort and style. With each year Western Recreational Vehicles, Inc. surpasses even our own high expectations of excellence. We take pride in building America's premium recreational vehicles.

When you travel in a 2005 Alpine Coach, it's like taking all the luxuries and comforts of home along. The Coach offers a variety of first-class features, including spacious rooms, oversized windows, generous headroom, handcrafted hardwood cabinetry finished with residential hardware and much more.

So no matter where your adventures lead, you'll be driving in first-class comfort in an Alpine Coach.

With each new Alpine Coach, we take the time to design and build it with care and ingenuity. From the elegant Flexsteel® premium grade furniture to plush Fabrica® residential grade carpeting, the Coach's interior design shows off your own personal fashion and flair.

The Alpine Coach has been named in national publications as the motorhome "that drives like a european sports sedan," is "...one fine driving machine" and "...it looks and feels like it should cost even more..." See for yourself what everyone is talking about and head to your local dealer for a test drive. Take a trip around the block and you'll want to take a trip across the country.



Ceramic Tile and Sharp® AQUOS LC-TV with HDTV Satellite Receiver options.



A valuable feature for 2005 is the push button electronically operated recessed stepwell cover. Electric activation eliminates freeze-ups common to air activated covers. When the step isn't needed, it's out of sight. (Front door models only)



Extra-wide and comfortable Ultra-Leather Buddy Seat with Power Footrest, 8-way Power Adjustment and 3-Point Color-Keyed Seat Belt option.



2005 Alpine Coach Limited



MODEL 40 FDQS • Sherwood Interior with Vintage Cherry Cabinetry

The optional 21.5 cu. ft. Amana® Side-By-Side Residential Refrigerator offers increased storage to handle the longest extended trip. Chilled water and ice are always available through the handy in-door dispenser.



GOURMET STYLE

Innovative galley designs have been engineered for the Alpine Coach to maximize storage and usable work area in each floor plan.

Available options, such as the revolutionary GE® Advantium Oven, offer time-saving carefree food preparation. The Advantium Oven bakes, browns, broils, grills and roasts up to 4-times faster than a conventional oven using pre-programmed menu items to accurately time cook your favorite meal. Eye-level over-the-range mounting maximizes storage space normally used for a conventional below-range oven.

High quality fixtures, appliances and tough Karadon® solid surface enhance your gourmet style for even the novice chef.



and Galley / Bath Area Polished Ceramic Tile options.



MODEL 38 FDTS • Platinum Interior with Natural Maple Cabinetry and 21.5 cu. ft. Amana® Residential Refrigerator option.



MODEL 34 FDDS
Sherwood Interior with Natural
Cherry Cabinetry option.

2005 Alpine Coach Limited



MODEL 40 FDQS • Woodlands Interior with Heritage Cherry Cabinetry and



A large Vanity Make-Up Counter with Karadon® Polished Solid Surface is standard in all 38 and 40 foot floor plans.



Residential style solid wood pocket doors partition the bedroom area from the bath area in all floor plans. This new feature provides additional privacy and a more residential feel to the bedroom area that our customers have asked for.



COMFORT & LUXURY

The comforts of home don't stop in the living room or galley; our engineers have designed unique bedroom areas with you in mind. You're sure to sleep comfortably in the spacious master suite, equipped with a full 60" x 80" queen-size, or in select floor plans, a full 76" x 80" king-size Discovery by Bodyrest® deluxe pillow-top inner spring mattress designed for standard fitted sheets. The convenient cedar-lined wardrobe, combined with drawers, offer an abundant amount of space for your personal items. You'll always travel and rest comfortably in an Alpine Coach.



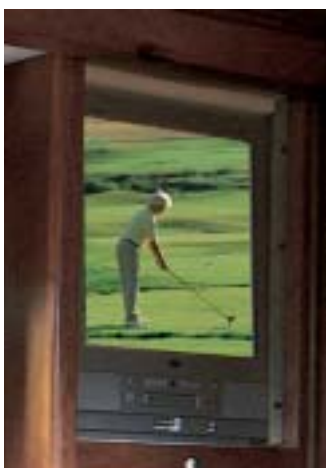
Combination Washer / Dryer options.



MODEL 36 MDDS • Sherwood Interior with Natural Cherry Cabinetry option.



MODEL 40 FDTS • Platinum Interior with Natural Maple Cabinetry.



An RCA® TV with built-in DVD player is now standard in the bedroom area on all floor plans. Different programs, whether over-the-air, satellite fed or DVD may be enjoyed independently on each television.

2005 Alpine Coach Limited



MODEL 40 FDQS • Sherwood Interior with Vintage Cherry Cabinetry option.

Custom designed, oversized and fully enclosed shower areas are manufactured by Amtech® to Alpine Coach specifications using proprietary molds and residential grade enclosures. Reinforcements are strategically placed during manufacturing to create one of the strongest floors available. This also ensures the highest quality fit, finish and up to date styling that will maintain its good looks for years to come.

Notice how, in select floor plans, the Vanity Area is integrated with the slide-out offering additional floor space and comfort in the bath area.

A high-intensity residential style light bar and large medicine chest with mirrored door compliments each bath area.



Folding Shower Seat option for personal comfort.

Quality satin nickel finish shower hardware and insulated skylight. An optional tub/shower combination is available.

ATTENTION TO THE NECESSITIES

Alpine Coach owners have always appreciated the unique and spacious bath areas specially engineered for each floor plan. Quality fixtures, abundant storage areas and oversized counter areas are a priority.

A true residential feel and attention to detail will enhance your comfort on the road.



MODEL 34 FDDS • *Platinum Interior with Tuscan Maple Cabinetry and Folding Shower Seat option.*



An additional Vanity Area is found in the 40 FDDS floor plan offering additional privacy and convenience.



Karadon® Solid Surface polished and oversized Vanity Top.



2005 Alpine Coach™ Limited



Pass through storage bays are spacious and equipped to handle all of your necessities.



Integrated into the rear cap, is a locking access door that allows an easy visual check of coolant, power steering fluid and belts, as well as an easy to reach engine oil fill. All in a neatly designed and finished area.



Solarcool mirror-tinted thermal panel windows are standard and increase privacy and insulation.



Alpine's sanitation station is packed with premium features; black tank flush, pressurized hot/cold faucet and showerhead, light, soap dispenser, paper towel holder and connections for 50 amp service, cable TV, city water and telephone.



Optional Glendinning® Power Cable Reel simplifies electrical hook-up and provides fast and reliable coiling for efficient cord storage.

NATURAL BEAUTY

While the Alpine Coach's interior is magnificent, the exterior is just as impressive, both in appearance and durability. The exterior is built to last and endure any type of weather. Alpine Coach offers five Premium Exterior Color Groups in a striking transitional design as a standard feature.



The optional Hydro Hot™ Hydronic Heating System includes the 15K BTU Air Conditioner upgrade without heat pump. Benefits include continuous hot water, better interior temperature control and a preset basement storage area temperature for colder season travel.

Daytime Running Lights, functioning automatically through the headlights, are standard and will increase the visibility of your Alpine Coach to other motorists for an increased margin of safety.



A special bracket is mounted to the roof for antennas and air horns eliminating additional holes and minimizing the chance of water intrusion. Notice that the bracket is also located back from the front of the coach to minimize wind noise while in transit.

MODEL 38 FDTS • Mood Indigo Premium Exterior with A&E Power Pro® Awning with Wind Sensor option.



Automotive style integrated tail and auxiliary lower backup lights aid in vision and safety. A specially designed spoiler helps to direct air over the rear cap to minimize road grime from adhering to the cap surface.



The optional A&E Power Pro® Fabric Awning with Wind Sensor will automatically retract to reduce the chance of wind damage and can be calibrated to your preference depending on the windspeed at your location. A small handheld remote allows operation without having to enter the coach.



Two-piece "bus style" urethane set windshields seal tighter than rubber gasket applications. Standard forward mounted, chromed, heated and remote controlled mirrors create a larger field of vision for added safety.

2005 Alpine Coach™ Limited

PERFORMANCE AND PROTECTION

When it comes to drivability, Alpine Coach will exceed your expectations with its own Peak Custom Chassis. Our philosophy is simple: Build a coach with handling characteristics reminiscent of a European touring sedan. From the oversized Toyo® tires that deliver supreme traction and braking, to the powerful standard 8.9 liter ISL Pegasus 400-horsepower Electronic Cummins® diesel engine, every detail was examined to make the Alpine Coach the finest and safest Premium Coach in its class.

Please see your dealer or contact Western Recreational Vehicles for copies of recent product reviews of the Alpine Coach and its high performance Peak Custom Chassis.

Experience the perfect balance of quality, performance and convenience. It only takes one test drive to see why Alpine Coach is changing the standards by which others are measured.

**PEAK
CHASSIS**



- A. The Huck® bolted frame adds strength and integrity to the Coach. Huck bolts are utilized for their proven superior strength and reliability, as proven in the 100,000 GVW Class 8 truck market and in every Alpine Coach.
- B. A Class 4 10,000 lb. capacity hitch with wiring and tow plug is standard for the tow vehicle of your choice.
- C. The Vansco® Power Net Electrical System is fully multiplexed. This state-of-the-art streamlined system allows easier and more accurate troubleshooting

and helps to alleviate added weight caused by additional wire, relays and fuses.

- D. Two Group 31 Interstate® maintenance free chassis starting batteries provide 660 Cold Cranking Amps, and are grouped with 6 powerful Interstate® 6-volt house batteries offering a total 732 amp. hours of service for maximum performance and extended usage. The optional Battery Fill System offers simple push-button water level maintenance of the 6 house batteries through a small electric pump and distilled water reservoir.



A



B

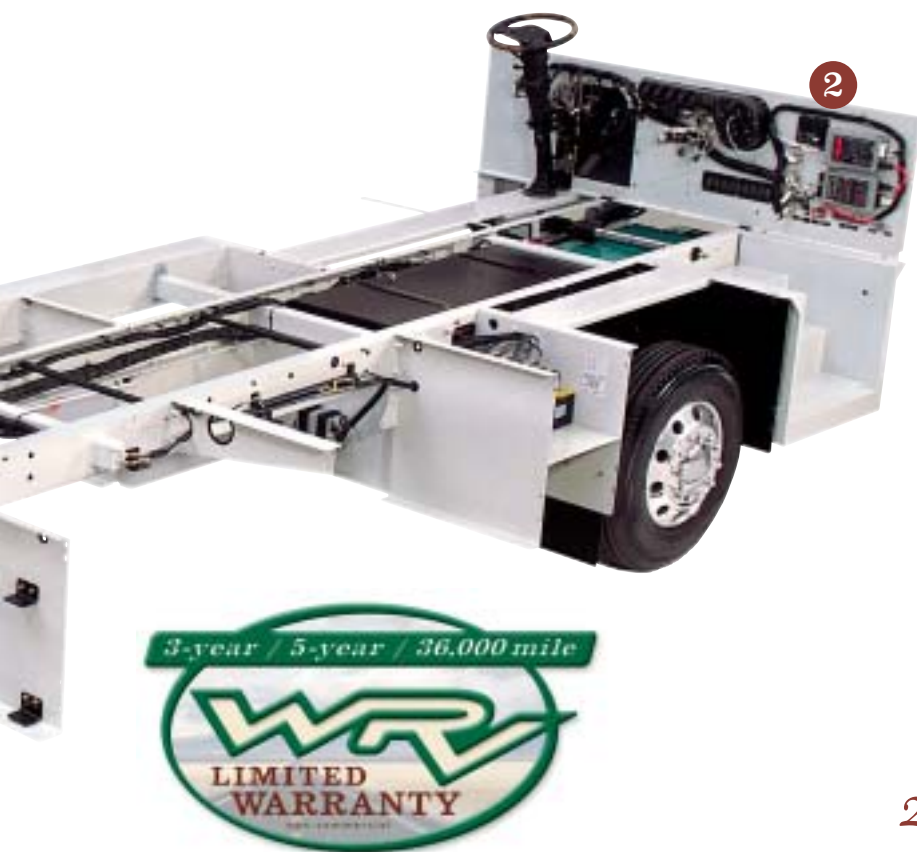


C



D

AMERICA'S PREMIUM MOTOR COACH



1. The engine maintenance center allows access to check engine oil, transmission fluid level, service of air filter, fuel filter, auxiliary air coupler and automotive diagnostic link.
2. Every electrical connection is well labeled, coded and harnessed. The use of aircraft and automotive connectors make this system virtually fail-safe.
3. The Cummins® 8.9 ISL Pegasus 400-horsepower electronic engine is standard in all floor plans, meets newly mandated federal emission standards and provides quieter responsive power.
4. The cooling system for the Cummins® diesel engine earned high honors by passing the strict Cummins® Engine Company test #AEB 90.24 cooling, a critical consideration when purchasing a diesel pusher motor coach.

2005 Alpine Coach™ Limited

- E. The standard HWH® Fully Automatic 4-point Hydraulic Jack Leveling System provides greater travel than air leveling for a better stabilized Coach on almost any terrain.
- F. Peak Chassis boasts one of the best handling air suspension systems. It includes Neway's® heavy-duty custom tuned "active" air ride suspension, Bilstein® heavy-duty self-adjusting gas shocks, Toyo® high performance all steel radials, IPD 1⁵/₈" diameter front anti-sway bar and four ride height control valves to constantly monitor and react to changing road and weight conditions at each wheel. When you combine the above suspension systems with one of the best weight distributed coaches in the industry (40% front and 60% rear) you know you have invested in a great driving machine!
- G. Safety and automotive feel were two leading factors when 15 inch ABS disc brakes were engineered into the Peak Chassis. According to the FMVSS 105 Brake Performance Test, Alpine

Coach exceeded the requirements with "a minimum 24% factor of safety at maximum gross vehicle weight" at the Bosch® Automotive Proving Grounds. It is comforting to know this is the same style of performance braking system used in critical applications for airplanes, Nascar® and Indy race cars.

- H. The side mounted all steel and aluminum radiator is engineered for greater cooling and longevity than others that use common plastic parts. The side mounted muffler system helps to achieve a 10-degree departure angle that won't drag on driveways like rear mounted models.
- I. Teleflex® adjustable throttle and brake pedals are standard, and move with the push of a button to meet your requirements for increased driving comfort and added safety. The automotive inspired hanging pedal design provides the same type of familiar pedal movement you are accustomed to in your own car.



E



F



G



H



I

2005 SPECIFICATIONS

PEAK CUSTOM CHASSIS

	34'	36'	38'	40'
Cummins® 8.9 ISL Pegasus 400-hp electronic diesel engine, 1,200 ft/lbs. torque w/Jacobs® 2 Stage Compression Brake	S	S	S	S
Allison® 3000MH 6 speed World Transmission	S	S	S	S
Meritor® MFS144 wide track front axle, 50° turn angle w/self lubricating hubs and stemco visual seals	S	S	S	S
Meritor® RS19145 rear axle w/quiet gearing and 4.63:1 gear ratio	S	S	S	S
Wabco® four wheel antilock brakes	S	S	S	S
Meritor® high performance 4 piston/caliper hydraulic vented disc brakes	S	S	S	S
Meritor® full wheel air brakes w/auto slack adjusters and ATC (credit)	O	O	O	O
16.5" x 7" drum-style s-cam park brake (w/air brake opt.)	S	S	S	S
12" x 4" drive line drum park brake, spring applied, air release	S	S	S	S
Heavy-duty cross-flow side mounted radiator w/variable speed hydraulic fan	S	S	S	S
10 cubic inch ACME® R-134A air conditioning compressor	S	S	S	S
160 amp Leece-Neville® alternator	S	S	S	S
2 Interstate® 660 CCA @ 0°F maintenance free starting batteries	S	S	S	S
Vansco® fully multiplexed electrical system	S	S	S	S
9" raised rail ladder constructed chassis frame, 50,000 psi steel, Huck® bolted together	S	S	S	S
Full steel wheel wells w/undercoating	S	S	S	S
115 gallon fuel capacity	S	S	S	S
Heavy duty R.H. Sheppard® M-100 steering gear, 14,000 lb. rated w/18.9:1 ratio	S	S	S	S
Neway® heavy-duty custom tuned 4 wheel "active" air ride suspension system	S	S	S	S
Bilstein® high performance heavy-duty gas pressurized self-adjusting shocks	S	S	S	S
IPD® 1 5/8" diameter front stabilizer bar	S	S	S	S
Toyo® 11R 22.5 "H" rated high performance steel radial tires	S	S	S	S
(4) Polished 8.25 x 22.5 aluminum wheels w/inner dual steel wheels, trim kit and valve extenders	S	S	S	S
Haldex Purest® heated air dryer	S	S	S	S
Nelson® replaceable air filter	S	S	S	S
Air filter restriction indicator	S	S	S	S
Douglass® tilt-telescoping steering column	S	S	S	S
Electronic cruise control w/high idle	S	S	S	S
Teleflex® suspended-adjustable brake and accelerator pedals	S	S	S	S
VIP® leather back-lit steering wheel, 18" diameter	S	S	S	S
Air suspension deflation system	S	S	S	S
Air conditioning condensor	S	S	S	S
Front and rear mud flaps	S	S	S	S
HWH® fully automatic 4-point hydraulic jack leveling	S	S	S	S
Valley® 10,000 lb. rated tow hitch w/6 way tow plug	S	S	S	S
Full width & length vibration dampner system between coach & chassis	S	S	S	S
HWH® self synchronizing room slide-out systems	S	S	S	S
Kwikkee® electric generator slide-out	S	S	S	S
Chassis battery disconnect switch	S	S	S	S
Onan® 7.5 KW quiet diesel generator set	S	S	S	S
Chassis service center including: engine diagnostic port, auxiliary air supply, remote fuel filter, engine and transmission dipsticks, remote 20" light and air cleaner access	S	S	S	S
Integrated electric stepwell cover (front door models only)	S	S	S	S
Actia® Smart Gauge® electronic gauge package	S	S	S	S

BODY CONSTRUCTION / EXTERIOR

	34'	36'	38'	40'
Laminated/vacubonded 6005 T5 aluminum tube structure: 2" walls, 2.25" floor, 5.25" roof	S	S	S	S
One-piece fiberglass roof	S	S	S	S
Computer controlled urethane adhesive lamination process	S	S	S	S
2-lb. density polystyrene block foam insulation, 34% higher "R" value than fiberglass blanket	S	S	S	S
45 degree mitered and MIG welded frame corners	S	S	S	S
Large living area slide-out	S	S	S	S
Bedroom wardrobe slide-out	S	S	N	N
Dual bedroom slide-out	N	N	S	S
Slide-out awnings	S	S	S	S
A&E Power Pro® fabric power awning w/wind sensor	O	O	O	O

BODY CONSTRUCTION/EXTERIOR (cont.)

	34'	36'	38'	40'
Roof ladder	O	O	O	O
3M® film front rock guard	S	S	S	S
Solarcool® mirror-tinted thermal pane windows	S	S	S	S
Kwikkee® single tier entrance step	S	S	S	S
HWH® self-synchronizing hydraulic main slide-out	S	S	S	S
Sealed/enclosed ceiling A/C duct w/interior Amoco® condensation barrier	S	S	S	S
PTL® lighted entry door w/screen	S	S	S	S
Insulated aluminum bay doors	S	S	S	S
Lighted & carpeted storage bays	S	S	S	S
Sanitation Station including: hot/cold outside sprayer/shower, paper towel holder, black tank flush system, light and soap dispenser	S	S	S	S
Premium Exterior/Interior Decor Choices:	S	S	S	S
Mood Indigo (blue) Sherwood (green)				
Brandywine (spice) Platinum (silver/grays)				
Woodlands (earthtones)				

ENTERTAINMENT FEATURES

	34'	36'	38'	40'
27" Toshiba® Flat Screen TV in living area	S	S	S	S
Sharp® AQUOS LC-TV in living area w/HDTV Satellite Receiver	O	O	O	O
Cable TV & phone hook up	S	S	S	S
Pioneer® AM/FM CD Player, XM Satellite Radio compatible and pre-wired w/mounted antenna	S	S	S	S
DVD Home Theatre Sound System	S	S	S	S
Winegard® TV antenna w/signal amplifier	S	S	S	S
TV/Video Input Selection Unit	S	S	S	S
Winegard® satellite dish	O	O	O	O
Complete pre-wiring for King Dome® Satellite System	S	S	S	S
King Dome® electronic self-locating satellite dish	O	O	O	O
RCA® Satellite Receiver	S	S	S	S
High quality shielded digital RG-6 coax cable	S	S	S	S
RCA® TV w/built-in DVD player in bedroom	S	S	S	S
Halogen reading lights w/dimmer switches	S	S	S	S
110-volt bedroom reading lights w/dimmer switch	S	S	S	S
Bose® Wave Stereo in bedroom	O	O	N	N

BATH FEATURES

	34'	36'	38'	40'
Residential shower & bathroom fixtures	S	S	S	S
Large garden shower	S	S	S	S
Tub/shower combination	O	O	O	O
Cedar lined wardrobe closet	S	S	N	N
Insulated skylight	S	S	S	S
Private water closet w/Thetford® porcelain toilet	S	S	S	S
Karadon® solid surface polished vanity countertop	S	S	S	S
Suburban® 10 gallon DSI/110-volt water heater	S	S	S	S
Power roof vent w/remote switch (water closet)	S	S	S	S
Fan-tastic® Vent w/remote switch in bath hallway	S	S	S	S
Residential medicine cabinet w/high intensity light bar	S	S	S	S
WilsonArt® laminate wood floor	S	S	S	S
Folding shower seat	O	O	O	O
Majestic® Washer/Dryer combo	O	O	O	O
Kenmore® Washer/Dryer stacked	N	O	O	O*
Remote 12-volt water pump start switch	S	S	S	S

INTERIOR COMFORTS

	34'	36'	38'	40'
Maple hardwood cabinetry w/choice of Natural or Tuscan stain	S	S	S	S
Solid cherry cabinetry choices: Vintage Cherry, Natural Cherry or Heritage Cherry	O	O	O	O
Residential grade cabinet hardware	S	S	S	S
Microlene® water filtration system	S	S	S	S
Shur-Flo® high volume water pump w/in-line filter	S	S	S	S
Residential retractable galley faucet w/sprayer	S	S	S	S
Hardwood valance & blind at galley window	S	S	S	S
110-volt fluorescent galley lighting	S	S	S	S
Karadon® solid surface countertops, sink filler & backsplash polished to a high lustre	S	S	S	S
Karadon® solid surface dinette table w/single leg (no charge)	O	O	O	O
Day/Night shades	S	S	S	S

AMERICA'S PREMIUM MOTOR COACH

INTERIOR COMFORTS (continued)

	34'	36'	38'	40'
Free standing hardwood dinette table w/2 chairs	s	s	s	s
Booth dinette w/solid surface table	o	o†	o	o†
Folding dinette chairs (2)	o	o	o	o
Atwood® 3-burner cooktop	s	s	s	s
Atwood® 22" gas oven	o	o	o	o
Convection/microwave oven	s	s	s	s
GE® Advantium convection/microwave oven	o	o	o	o
Dometic® 10 cu.ft. refrigerator (stacked) w/pantry	s	s	s	s
Dometic® 14 cu.ft. refrigerator (side x side) w/o pantry	o	o	o	o
21.5 cu.ft. Amana® residential refrigerator	n	n	o	o
Fan-Tastic® vent in galley w/remote switch	s	s	s	s
Two-door pantry w/shelves	s	s	s	s
Power range vent hood w/light	s	s	s	s
WilsonArt® laminate wood flooring in galley	s	s	s	s
Residential wrap-around front privacy curtain	s	s	s	s
Fabrica® residential grade carpet w/padding	s	s	s	s
Dometic® two-zone dual 13,500 btu ducted A/C	s	s	s	s
Hydro Hot™ Hydronic Heating System w/15,000 btu A/C upgrade (no heat pumps)	o	o	o	o
Dometic® dual 15,000 btu ducted A/C w/integrated heat pumps (w/ Hydro Hot)	o	o	o	o
Dometic® dual 15,000 btu ducted A/C w/integrated heat pumps (w/o Hydro Hot)	o	o	o	o
Ceramic tile (galley & bath) (polished finish)	o	o	o	o
Ceramic tile (galley & bath) (textured finish)	o	o	o	o
Ceramic tile (front) (polished finish)	o	o	o	o
Ceramic tile (front) (textured finish)	o	o	o	o
Wood privacy door between bedroom & bath	s	s	s	s
Solid wood headboard in bedroom	s	s	s	s
Large nickel plated stainless steel double galley sink	s	s	s	s
Hydro-Flame® 42,000 btu ducted LP furnace	s	s	s	s
Central vacuum cleaner w/attachments	s	s	s	s
Computer desk (curbside - N/A w/EZ bed)	n	o†	n	o†
Flexsteel® Premium upholstered recliner (curbside)	s	s	s	s
Flexsteel® Premium ultra-leather recliner (curbside - upgrade)	o	o	o	o
Flexsteel® Premium euro chair w/ottoman	o	o	o	o
Flexsteel® Premium upholstered EZ bed (roadside)	s	s	s	s
Flexsteel® Premium ultra-leather EZ bed (roadside)	o	o	o	o
Flexsteel® Premium upholstered EZ bed (curbside)	n	o†	n	o†
Flexsteel® Premium ultra-leather EZ bed (curbside)	n	o†	n	o†
Bodyrest® 60" x 80" full queen size walk around bed	s	s	s	s*
Bodyrest® 76" x 80" full king size walk around bed	n	n	n	s*
Padded Vinyl Ceiling	s	s	s	s
Premium Exterior/Interior Decor Choices:	s	s	s	s
Mood Indigo (blue)			Sherwood (green)	
Brandywine (spice)			Platinum (silver/grays)	
Woodlands (earhtones)				

s = standard o = option n = not available

◆ = not available in mid-door models ▼ = not available in front-door models * = not available 40FDQS † = not available 36FDTS, 40FDQS

ELECTRICAL SYSTEMS

	34'	36'	38'	40'
7.5 kw Onan® quiet diesel generator	s	s	s	s
Interstate® batteries	s	s	s	s
Automatic battery fill system	o	o	o	o
2000-watt power inverter w/100 amp charger:	s	s	s	s
(2) 660 CCA 12-volt batteries (chassis), (6) 6-volt batteries w/732 total amp. hours (house)				
Siemens® solar panels - (2) 50-watt/3 amp	o	o	o	o
Solar panel - 10-watt trickle charge	o	o	o	o
Surge - Guard® w/ onboard voltage monitor	o	o	o	o
12-volt remote shut-off switch	s	s	s	s
50 amp service w/detachable power cord - 35 ft. cable	s	s	s	s
High intensity patio awning/security light	s	s	s	s
6-pin tow plug	s	s	s	s
Basement cable TV & telephone	s	s	s	s
Basement dual 110-volt GFI outlet	s	s	s	s
Glendinning® power cable reel - 35 ft. cable	o	o	o	o
Automatic generator start system	s	s	s	s

DRIVING COMFORTS

	34'	36'	38'	40'
Ergonomically designed dash w/oversized Actia® gauges	s	s	s	s
Dual air horns	s	s	s	s
Electronic cruise control & throttle	s	s	s	s
Integrated drive-train monitor systems	s	s	s	s
Battery boost switch	s	s	s	s
Rear hidden camera & color screen dash-mounted monitor	s	s	s	s
Bus style urethane set windshields	s	s	s	s
Carefree® Powervisor elec. sun visors	s	s	s	s
Flexsteel® ultra-leather driver/passenger seats	s	s	s	s
Flexsteel® ultra-leather driver seat and passenger Buddy Seat w/integrated 3-point seat belts	o	o	o	o
6-way power driver seat	s	s	s	s
Ultra-leather Buddy Seat w/Power Footrest (2-point seat belt)	o	o	o	o
Electrically operated recessed stepwell cover	s	s*	s	s*
Dual map lights	s	s	s	s
Dual auxiliary circulation fans	s	s	s	s
Hella® automotive style sealed beam halogen headlamps	s	s	s	s
Forward mounted chrome mirrors, heated & remote controlled	s	s	s	s
Smart Wheel® w/momentary running light and headlamp buttons, cruise control & windshield wiper delay controls	s	s	s	s
Daytime running lights (DRLs)	s	s	s	s
Driving lights	s	s	s	s
Two remote generator start switches	s	s	s	s
Auxiliary 12-volt dash receptacle	s	s	s	s
CB antenna & coax pre-wire	s	s	s	s
Dash A/C & heating	s	s	s	s
Cabinet storage above driver and passenger	s	s	s	s

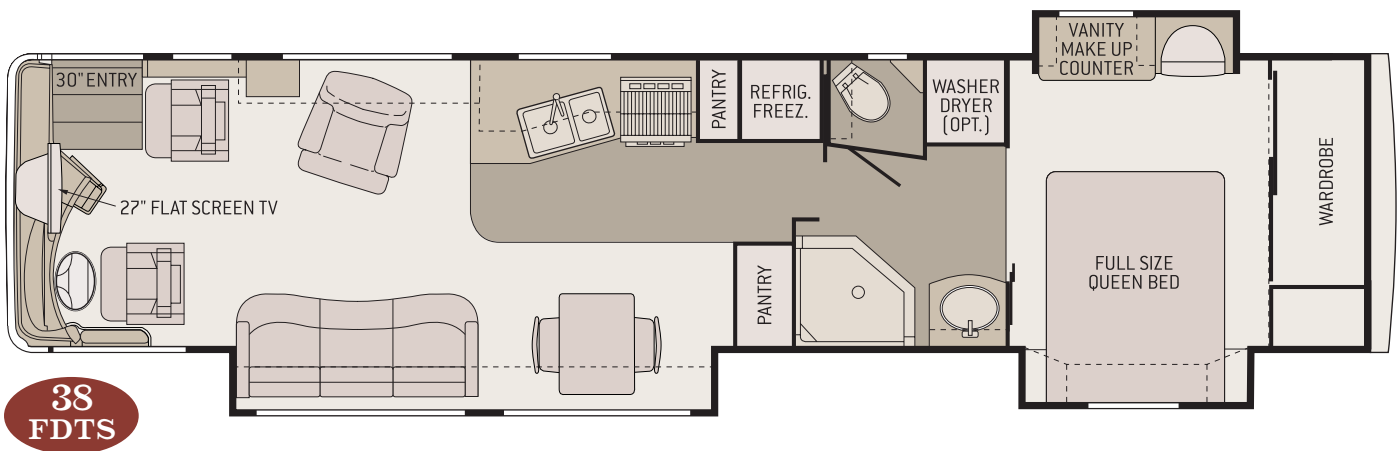
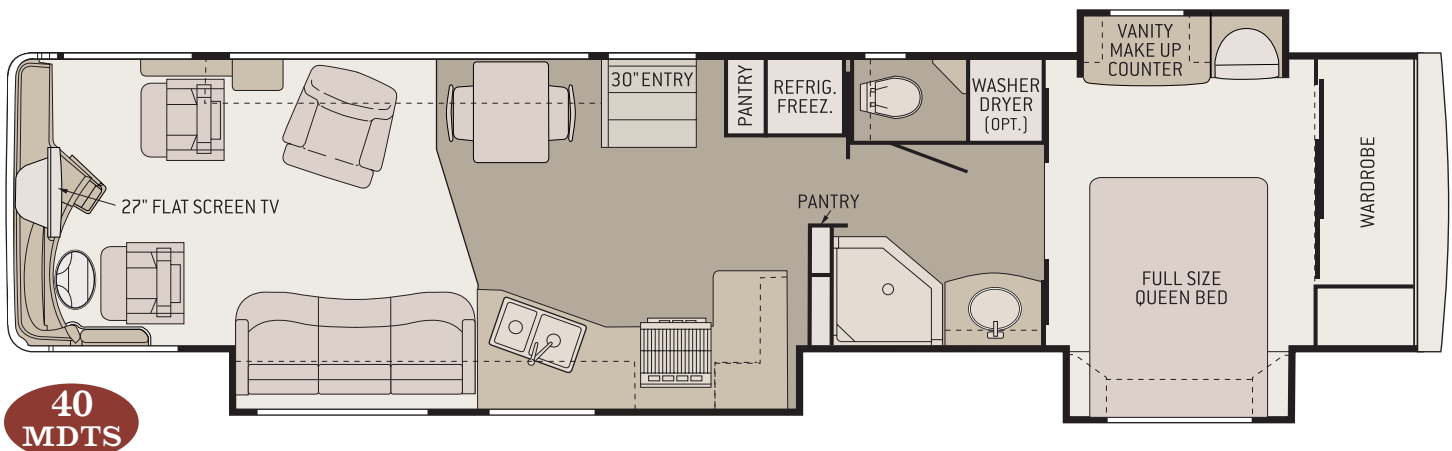
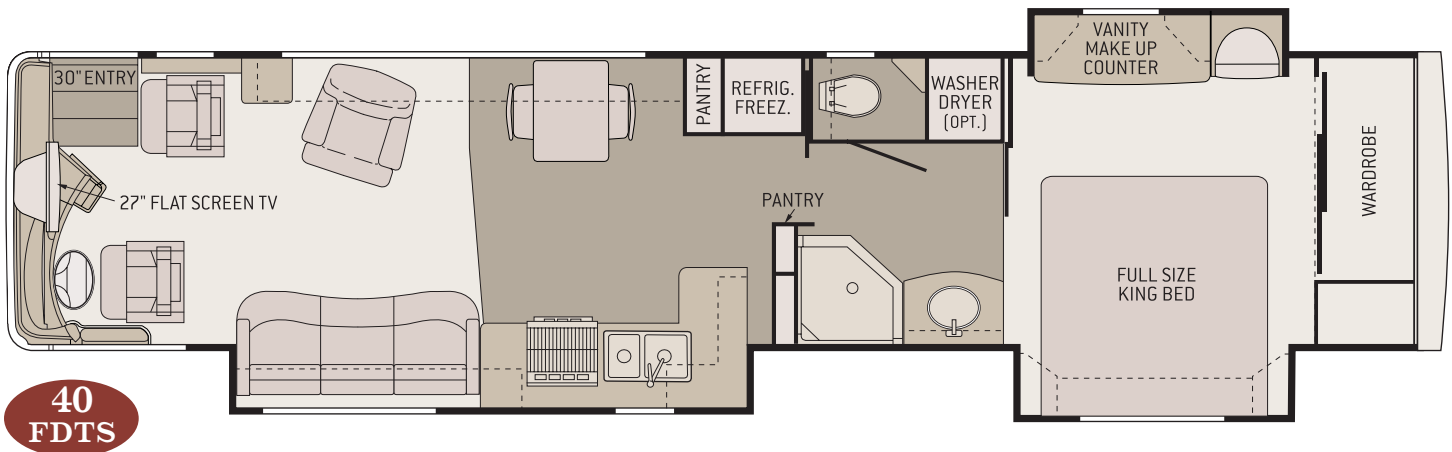
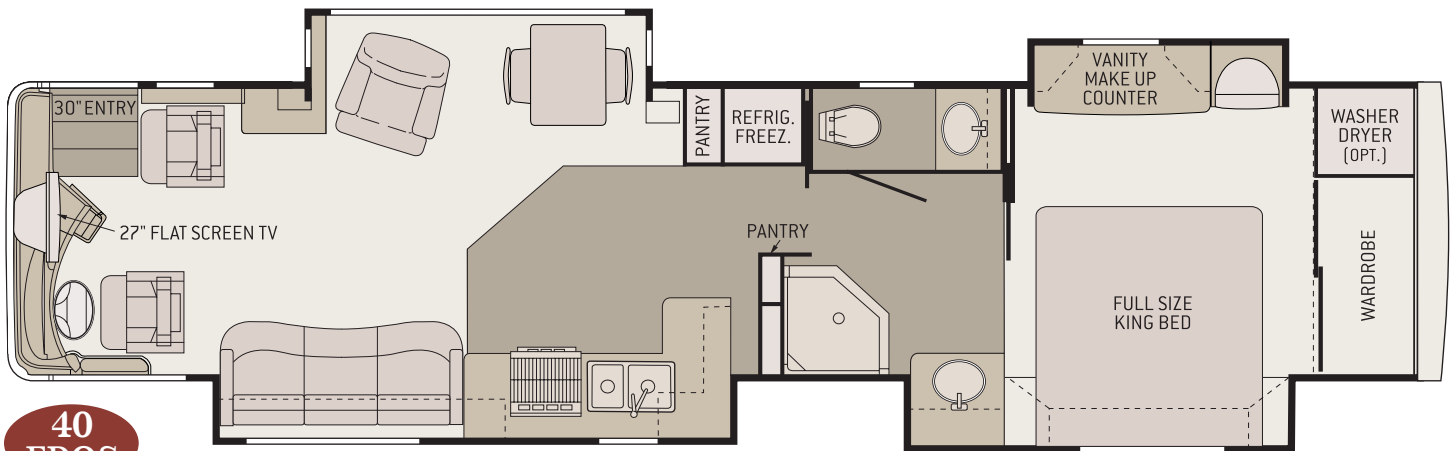
2005 Alpine Coach Limited WEIGHTS AND MEASURES

	34 FDQS	36 FDTS	36 FDQS	36 MDQS	38 FDTS	40 FDQS	40 FDTS	40 MDTS
Interior height	6'7"	6'7"	6'7"	6'7"	6'7"	6'7"	6'7"	6'7"
Exterior height	11'11"	11'11"	11'11"	11'11"	11'11"	11'11"	11'11"	11'11"
Exterior width	102"	102"	102"	102"	102"	102"	102"	102"
Wheelbase	217"	252"	252"	252"	260"	278"	278"	278"
Length overall	34'11"	37'	37'	37'	38'6"	40'	40'	40'
Gross Axle Weight Rating - GAWR front	13,000	13,000	13,000	13,000	13,000	13,000	13,000	13,000
Gross Axle Weight Rating - GAWR rear	20,000	20,000	20,000	20,000	20,000	20,000	20,000	20,000
Unloaded Vehicle Weight with fuel - UVW lbs.+	24,675	N/A	24,863	24,648	26,528	27,680	26,520	26,614
Cargo Carrying Capacity - CCC lbs.	6,607	N/A	6,419	6,634	4,754	3,602	4,762	4,668
Gross Vehicle Weight Rating - GVWR lbs.	33,000	33,000	33,000	33,000	33,000	33,000	33,000	33,000
Fuel tank - gallons	115	115	115	115	115	115	115	115
Gross Combined Weight Rating - GCWR lbs.*	43,000	43,000	43,000	43,000	43,000	43,000	43,000	43,000
LPG tank - gallons	42	42	42	42	42	42	42	42
Fresh water - gallons	100	100	100	100	100	100	100	100
Combined waste tank capacity - gallons	148 (84 Grey 64 Black)	178 (100 Grey 78 Black)	178 (100 Grey 78 Black)	178 (100 Grey 78 Black)	178 (100 Grey 78 Black)	178 (100 Grey 78 Black)	178 (100 Grey 78 Black)	178 (100 Grey 78 Black)

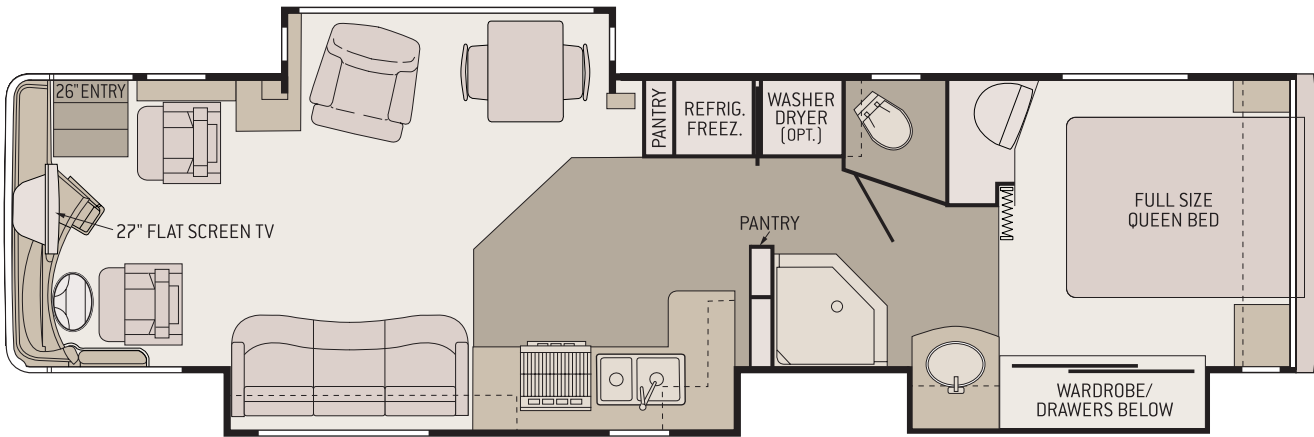
+ UVW is based on standard models and does not include options, cargo, fresh water, LP gas or occupants. N/A = Not available at time of printing. Please consult your dealer or WRV for current information.

* The maximum allowable combined weight of the coach with the attached towed vehicle. Towing and braking capacities may differ. GCWR assumes both vehicles have functioning brakes.

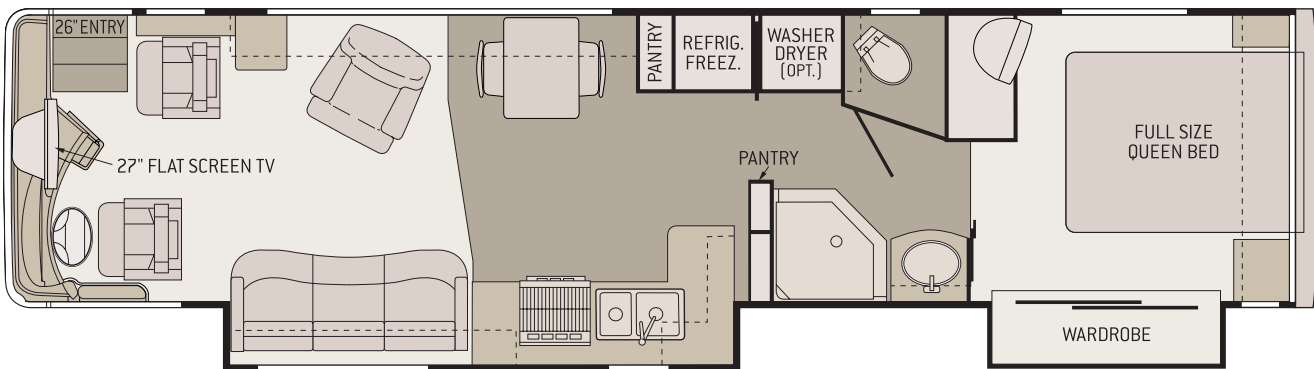
2005 FLOOR PLANS



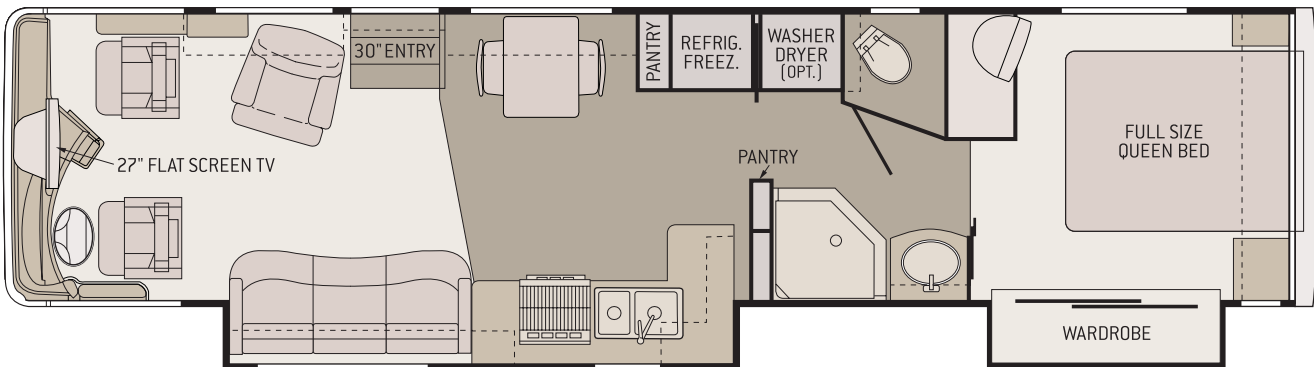
AMERICA'S PREMIUM MOTOR COACH



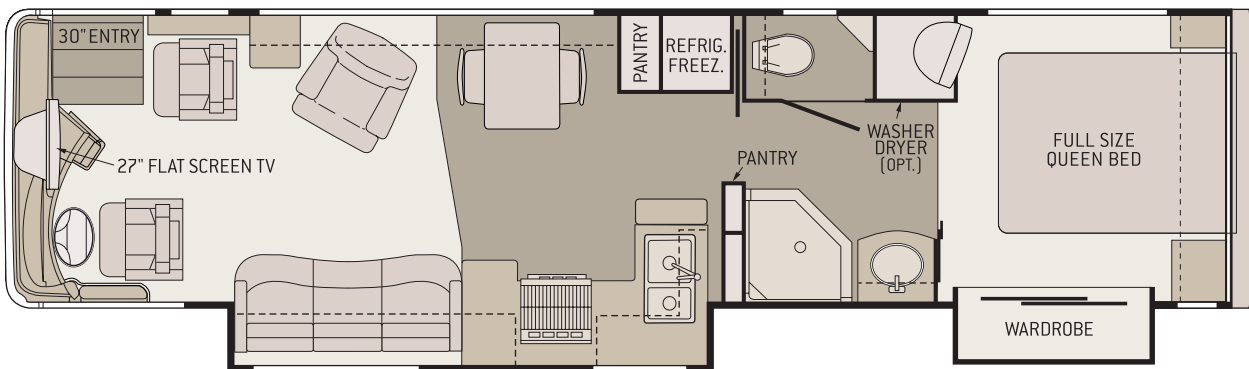
**36
FDTS**



**36
FDDS**



**36
MDDS**



**34
FDDS**

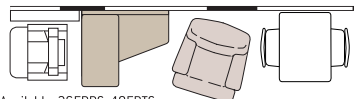
2005 Alpine Coach Limited FLOOR PLAN OPTIONS

CURBSIDE EZ BED



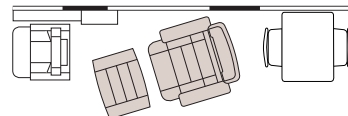
Available: 36FDDS, 40FDTS

COMPUTER DESK WITH RECLINER



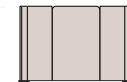
Available: 36FDDS, 40FDTS

EURO CHAIR WITH OTTOMAN



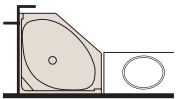
Available: all models

BOOTH DINETTE



Available:
34FDDS, 36FDDS,
38FDTS, 40FDTS

GARDEN TUB / SHOWER



Available: all models

INSIDE OR OUT, IT'S THE PLACE TO BE!



MODEL 36 MDDS • Sherwood Interior with Natural Cherry Cabinetry, Galley / Bath Area Polished Ceramic Tile, Flexsteel® Ultra-Leather Recliner, Solid Surface Dinette Table and Dometic® 14 cu. ft. Refrigerator options.

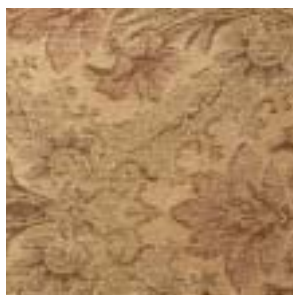
2005 DECOR AND INTERIOR WOOD CHOICES



MOOD INDIGO



SHERWOOD



BRANDYWINE



PLATINUM



WOODLANDS



NATURAL CHERRY



HERITAGE CHERRY



VINTAGE CHERRY



NATURAL MAPLE



TUSCAN MAPLE

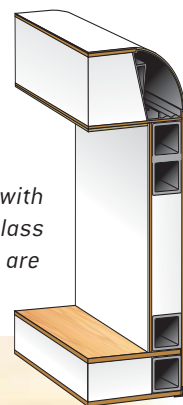
AMERICA'S PREMIUM MOTOR COACH



Beautiful fabrics and exciting exterior graphics are a few examples of our attention to detail and the extra care that goes into everything we do. Western Recreational Vehicles, Inc. is proud to continue the tradition of building America's Premium Performance Motor Coach – the 2005 Alpine Coach Limited.

QUALITY CONSTRUCTION

Fully laminated vacuum bonded 6005 T5 aluminum tube construction with block foam insulation for comfort in any climate. The one-piece fiberglass roof is strong, durable and 5.25" thick to insulate from the sun. Sidewalls are 2" thick while the floor is 2.25" to create a quiet ride.



MODEL 38 FDTs • Sherwood Premium Exterior.

THREE-YEAR / FIVE-YEAR / 36,000 MILE LIMITED WARRANTY

All of us at Western Recreational Vehicles, Inc. appreciate the interest you have taken in our popular Alpine Coach Limited Series. Please know we are truly committed to your ultimate satisfaction as evidenced in every aspect of Alpine Coach manufacturing. From start to finish, Alpine Coach construction is precisely planned, utilizing superior materials and innovative construction techniques. Thus, we confidently back every 2005 Alpine Coach Limited with a 3-Year / 5-Year / 36,000 Mile Limited Warranty. Consult your authorized Alpine Coach dealer or Western Recreational Vehicles, Inc. for all the warranty details and benefits of this reassuring warranty coverage.



2005 Alpine Coach Limited

ENJOY THE RIDE!



MODEL 38 FDTs • Platinum Premium Exterior with A&E Power Pro® Awning with Wind Sensor option.

MAKE PLANS TO TAKE THE *Alpine Coach* TOUR

We invite you to visit our state-of-the-art manufacturing facility located in beautiful Yakima, Washington. During your extensive tour, you will see Alpine Coaches being assembled with tremendous skill and pride. You'll also see our stringent Quality Assurance Program at work. Tours are available Tuesday and Thursday at 10:00 am.

YOUR AUTHORIZED DEALER

Manufactured by **Western Recreational Vehicles, Inc.**

PO Box 9547, 3401 W. Washington Ave. • Yakima, WA 98909

Toll Free Product Information - **(800) 777-4133** • www.wrv.com

2005 Alpine Coach™ Limited



Every effort has been made to use accurate photographs, product descriptions and specifications at the time of printing. However, because of continuous and progressive product improvement, specifications and descriptions, including weights and measures, are subject to change without notice or obligation.