

Magellan07

Class A Motorhome



FW Four Winds
INTERNATIONAL

07 | *Magellan...*



Shown with Belle Ayr Onyx interior and Cherry cabinetry, as well as Infiniss™ Leather driver and passenger chairs.

Raise Your Standard

It's time to raise your standard of living while on the road in the Magellan Class A motorhome. With upscale features and elegantly appointed interiors, the Magellan is the right combination of luxury and power.

With a choice of innovative floorplans, you'll find a model to meet your needs, tastes and lifestyle. Once you experience the Magellan, nothing else quite measures up. In comfort. In quality. And in value.

The Magellan offers double, triple and quadruple slide-out models so you can choose the size and floorplan that is right for you.

All Magellan motorhomes are built to meet high quality standards—from the inside out. The cockpit area is designed for maximum driver and passenger comfort. It features an oversized AM/FM radio with large buttons, compact disc and cassette player with a weather band. A convenient computer hook-up (including a 110-volt outlet and phone jack), is located on the passenger side. A flat screen 27" television is located in the front overhead with convenient storage cabinets on either side.

The sofa/dinette slide-out on the driver's side dramatically expands the entire living area so there is plenty of room to entertain guests, or just relax. An elegant curio cabinet (standard



INTERIOR DECOR

Above: Model 35B shown with Platinum Mist interior, Maple cabinetry and pull-out countertop extension.

Far right inset: The slide-out pantry offers plenty of handy storage. When closed, it holds all items securely in place—even when on the road.

Of Living *FW*

on models 36E, 36K and 38E), offers extra storage and countertop space, while adding a touch of style to the living area.

Model 35B is new for 2007, and is a great motorhome for those who enjoy preparing masterful meals. The kitchen slide gives even the most conscientious chef plenty of room to work. Plus, the versatile roll-out countertop extension is perfect for additional food preparation space.

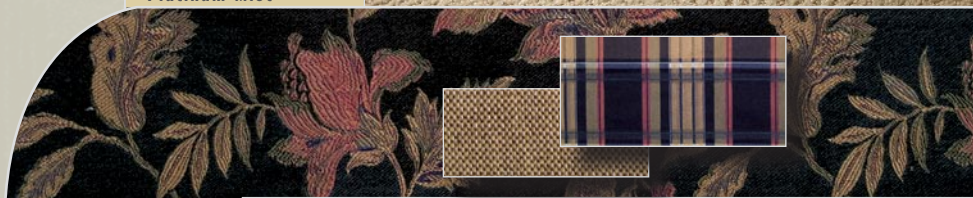
The kitchen also fully equipped with name brand appliances and offers plenty of storage space.



Gold Rush



Platinum Mist



Belle Ayr Onyx



Standard Oak



Optional Maple



Optional Cherry



Shown with Belle Ayr Onyx interior, Cherry cabinetry and Infiniss™ Leather hide-a-bed sofa.

Upscale Comfort; Practical Convenience

Magellan motorhomes are available in models that sleep from four to six people—with many unique features as well.

For example, Model 36E offers dual zone living. The comfortable living area in the front is complemented with a second one in the bedroom. The bedroom sitting area has two cozy leather Euro recliners so you can relax in comfort after a long day.

Model 36K is a triple slide-out floorplan that

features a spacious bedroom with king-size bed, large bath area and combination washer/dryer option.

Known as the original quadruple slide-out gas powered motorhome, Model 38E is captivating inside and out. This attractive side aisle floorplan has three windows in the hallway that provide additional natural light. The bathroom has two entry doors—one from the bedroom and one from the side aisle. Plus, Model 38E is built on the dependable W24 Workhorse chassis.



Model 36Z with queen-size bed and decorative hardwood headboard with mirrors. Shown with Platinum Mist interior and Maple cabinetry.



Model 36Z with bedroom vanity and upholstered stool shown with Platinum Mist interior and Maple cabinetry.



The rear full bath on Model 36Z is shown with Platinum Mist interior and Maple cabinetry.

You can indulge yourself in gentle comfort after a full day of activities in the cozy bedroom. It features a queen-size bed (king-size bed on Model 36K), with innerspring mattress that has a memory foam top for added sleeping comfort. The color coordinated bedspread, pillow shams and hardwood headboard with mirrors add a touch of style and elegance.

While relaxing in bed, you can watch your favorite television show or turn on your individual reading light to read your favorite book or

magazine. The handy nightstands provide additional storage for small items. Day/night shades keep the room dark when you want to sleep and enhance your privacy.

The bath area offers all the conveniences of home. Standard features include a medicine cabinet with adjustable shelves, lavatory sink with decorative faucet and china bowl toilet.

The standard shower has an ABS surround with “granite look” finish and glass doors.

Magellan Features

BODY CONSTRUCTION/EXTERIOR

STANDARD

- ❑ 3" steel welded floor system
 - ❑ Vacu-Bond laminated roof, walls and floors with high-density block foam insulation
 - ❑ Fully welded tubular aluminum roof and sidewall cage construction
 - ❑ Choice of exterior graphics/paint packages
 - ❑ Seamless slick fiberglass exterior sidewalls
 - ❑ Fender integrated side docking lights
 - ❑ One-piece fiberglass front and rear caps
 - ❑ Air conditioning ductwork molded into roof insulation
 - ❑ Heated and enclosed utility station with full hook-ups
 - ❑ Premium one-piece TPO roof—Energy Star approved and labeled
 - ❑ Fully automatic hydraulic leveling jacks
 - ❑ Patio awning
 - ❑ Roof ladder
 - ❑ Exterior shower
- ### OPTIONS
- ❑ Full body paint package with color matched awnings
 - ❑ Automatic electric patio awning
 - ❑ 3M film front mask (full-body paint required)
 - ❑ Stainless Steel mud flap with Magellan logo

AUTOMOTIVE/COCKPIT

STANDARD

- ❑ 22.5" tires
- ❑ Stainless Steel wheel liners (Workhorse chassis only)
- ❑ Aluminum wheels (Ford chassis only)
- ❑ 18" VIP steering wheel (Workhorse chassis only)
- ❑ 5,000-lb. trailer hitch
- ❑ Dash fans
- ❑ Heated, remote exterior mirrors mounted to front cap
- ❑ Passenger side workstation with computer hook-ups including a 110V outlet and phone jack
- ❑ Infiniss™ Leather driver and passenger captain's chairs

- ❑ Six-way power driver seat
- ❑ Dash mount generator start switch
- ❑ Fog lights
- ❑ Back-up monitor with audio
- ❑ Oversized AM/FM radio with large buttons, compact disc and cassette player and weather band

OPTIONS

- ❑ Power sun visors

INTERIOR

STANDARD

- ❑ Full 84" interior ceiling height
- ❑ Residential linoleum (galley, bath and entry way)
- ❑ Two 13,500 BTU roof air conditioners
- ❑ Fantastic® fan in kitchen
- ❑ Oak cabinetry
- ❑ Fluorescent lights in living room
- ❑ Raised panel wall cabinet doors with hidden hinges
- ❑ Hardware with Brushed Nickel finish
- ❑ Day/night shades throughout
- ❑ Fabric hide-a-bed sofa
- ❑ Soft Touch vinyl ceiling
- ❑ Attractive curio cabinet with glass doors (36E, 36K and 38E only)
- ❑ Leather Euro recliner with ottoman in living room
- ❑ Flush floor slide-out (sofa/dinette)

OPTIONS

- ❑ Cherry or Maple cabinetry
- ❑ Dual pane windows
- ❑ Infiniss™ Leather hide-a-bed sofa
- ❑ Fabric recliner in place of leather Euro recliner
- ❑ Infiniss™ Leather recliner in place of leather Euro recliner
- ❑ 15,000 BTU front air conditioner with heat pump and solar charger

GALLEY

STANDARD

- ❑ 8-cubic-foot double door refrigerator
- ❑ 3-burner high-output cooktop
- ❑ 30", 1.7-cubic feet over-the-range convection microwave oven

- ❑ Large Stainless Steel double bowl sink
 - ❑ Slide-out pantry (not available with 12-cubic foot double door refrigerator)
 - ❑ Full extension metal drawer guides
 - ❑ Silverware tray
 - ❑ Upholstered booth dinette with innerspring cushions
 - ❑ Solid surface galley countertop with solid sink and range covers
 - ❑ Flip-up countertop extension (not available on 35B)
 - ❑ Roll-out countertop extension (35B only)
- ### OPTIONS
- ❑ 12-cubic foot side-by-side refrigerator with ice maker and raised panel inserts
 - ❑ Legless free-standing dinette with buffet and four chairs
 - ❑ 3-burner cooktop with oven

ENTERTAINMENT

STANDARD

- ❑ Cable television and satellite prep
- ❑ 27" flat screen television in front overhead
- ❑ 20" flat screen television in bedroom

OPTIONS

- ❑ Home theater system with DVD player and recessed ceiling speakers
- ❑ DVD player
- ❑ Satellite dish

BEDROOM/BATHROOM

STANDARD

- ❑ Inner spring mattress with memory foam top
 - ❑ Bedspreed and pillow shams
 - ❑ Attractive hardwood headboard with mirrors
 - ❑ King-size bed (36K only)
 - ❑ Vanity with stool (36Z and 38E only)
 - ❑ Two leather Euro recliners in bedroom (36E only)
 - ❑ China bowl toilet
 - ❑ ABS shower surround with "granite look" finish
 - ❑ Glass shower doors
- ### OPTIONS
- ❑ Bedroom workstation in place of leather Euro recliner with ottoman (36E only)

SAFETY/CONVENIENCE

STANDARD

- ❑ Entry door with deadbolt lock
- ❑ Telephone jack
- ❑ Systems Control Center
- ❑ Smoke detector
- ❑ Fire extinguisher
- ❑ LPG detector
- ❑ Three-point seatbelts for the driver and passenger
- ❑ Carbon monoxide detector
- ❑ Washer/dryer prep (35B, 36K, 36Z and 38E only)
- ❑ Black water tank flush

OPTIONS

- ❑ Washer/dryer combination (35B, 36K, 36Z and 38E only)
- ❑ Utility package includes two-way radios and valve stem extenders
- ❑ Central vacuum system

ELECTRICAL SYSTEMS

STANDARD

- ❑ Guardian RV Quietpack™ 75G generator (7500 watt)
- ❑ 50-amp service
- ❑ Marine-type detachable power cord
- ❑ 10-gallon gas/electric water heater
- ❑ Water heater bypass system
- ❑ Second auxiliary battery

OPTIONS

- ❑ Onan® RV Marquis Gold™ 5500 generator (5500 watt)
- ❑ Onan® RV Marquis Gold™ 7000 generator (7000 watt)
- ❑ 600-watt entertainment inverter (televisions and home theater system)

STORAGE AREAS

STANDARD

- ❑ Large pass-through roto-cast storage compartments
- ❑ Deluxe heavily insulated aluminum compartment doors
- ❑ In-floor slide system allowing for full height storage compartments

Specifications

MODEL	35B	36E	36K	36Z	38E
WEIGHT RATING (LBS.)					
Ford Chassis 6.8L Triton	V10	V10	V10	V10	N/A
Gross Vehicle (GVWR)	22,000	22,000	22,000	22,000	N/A
Gross Combined (GCWR)	26,000	26,000	26,000	26,000	N/A
Workhorse Chassis 8.1L Vortec	N/A	N/A	N/A	N/A	V8
Gross Vehicle (GVWR)	N/A	N/A	N/A	N/A	24,000
Gross Combined (GCWR)	N/A	N/A	N/A	N/A	30,000
MEASUREMENTS					
Wheel Base	228"	235"	235"	235"	252"
Exterior Length (without ladder)	35'10"	37'	37'	37'	38'10"
Exterior Height (with air conditioner)	12'11"	12'11"	12'11"	12'11"	12'11"
Interior Height	84"	84"	84"	84"	84"
Awning Size	18'	18'	19'	18'	20'
TANK CAPACITIES					
Fuel (gallons)	75	75	75	75	75
LPG (pounds)	96	96	96	96	96
Fresh Water (gallons)	60	60	60	60	60
Waste Water (gallons)	48	48	48	48	48
Gray Water (gallons)	49	49	49	49	49
Water Heater (gallons)	10	10	10	10	10
Furnace (BTUs)	35,000	35,000	35,000	35,000	35,000

Exterior Choices



Bismark Onyx
full-body paint option



Sandstone Crystal
full-body paint option



Manchester Suede
full-body paint option

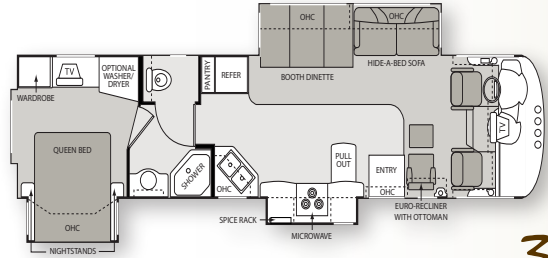


Doeskin standard
graphics/paint package

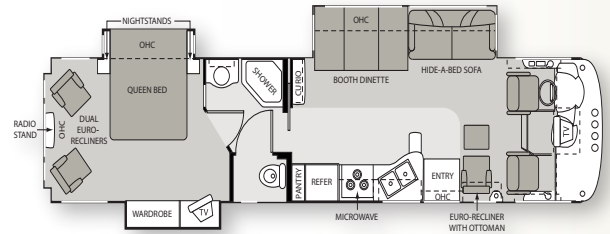


Titanium standard
graphics/paint package

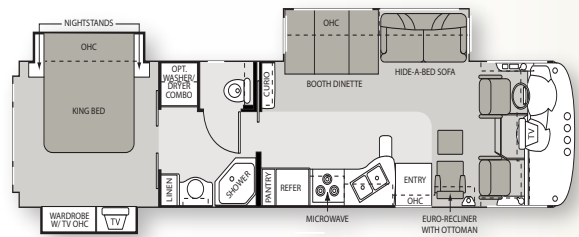
Floorplans



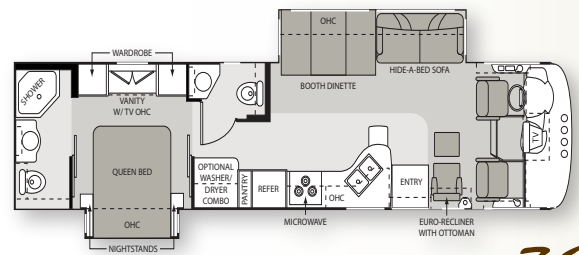
35B



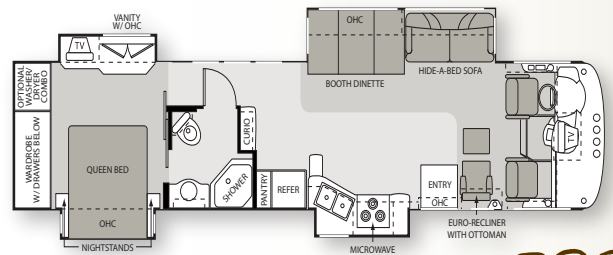
36E



36K



362



38E

Carpet
 Linoleum

THE FOUR WINDS INTERNATIONAL QUALITY DIFFERENCE

What sets Four Winds International apart from other manufacturers? It's a better level of quality built in each motorhome from the inside out. It's exceptional value that is integrated into each design. It's a dedication to innovation that allows us to continually improve our motorhomes. Our ultimate goal is to build the right combination of quality, functionality and durability so you get many years of enjoyment from your new motorhome. It's a commitment we take seriously, and one on which you can depend.



**3-Year/
45,000
Mile
Limited
Structural
Warranty**

THE DIFFERENCE IS CLEAR

At Four Winds International (FWI), we strive to go beyond your expectations with every motorhome we build. By doing so, you will be able to enjoy a better quality of life while on the road.

All FWI motorhomes come with a full one-year, 15,000 mile bumper-to-bumper warranty, as well as a three-year, 45,000-mile limited

structural warranty. Our nationwide dealer network is fully equipped and trained to meet your service needs. The FWI support staff has many years of experience, and is available to provide assistance on all technical, service and warranty issues. For complete warranty details, contact your Four Winds International dealer.

FWI is proud to offer high-quality products and support services that result in customer satisfaction—one customer at a time. So whether you are a first-time recreational vehicle owner, or an experienced one, we're confident that you'll enjoy years of adventures in your new motorhome. This is the Four Winds International difference.

VEHICLE LOADING

Every effort has been made to provide the greatest number of options for the recreation vehicle owner. Along with these choices comes the responsibility to manage the loads that are imposed by the choices so that they remain within the manufacturer's specified chassis weight limits. Do not overload the recreation vehicle.

DRY WEIGHTS

Based on standard features; optional equipment not included. Net carrying capacity (NCC) determined by subtracting unloaded vehicle weight (UVW) from gross vehicle weight, (GVWR) and includes fluids, options, and cargo. Liquid capacities and weights are approximations only.

Product information, specifications, and photography in this brochure were as accurate as possible at time of printing. Photographs may contain some features that are optional on your vehicle. Since we continually strive to improve our products, actual products may differ. Prices and specifications are subject to change without notice. All capacities are approximate and dimensions are nominal. Some features or options may be different or unavailable in Canada.

WARNING

This information is intended as a guide only. Weights of individual vehicles may vary. Consult your owner's manual for complete loading, weighing, and towing instructions.

IMPORTANT

Towing capacity may vary by chassis model, floorplan, options and loading of the vehicle. This may result in a towing capacity which is less than the maximum capacity of the hitch. Do not exceed the vehicle's Gross Combined Weight Rating (GCWR), or the hitch rating. A separate functioning brake system is required for any towed vehicle or trailer weighing more than 1,000 lbs. (450 KG) when fully loaded.

WHY THOR IS YOUR BEST RV VALUE

Thor Industries, Inc., listed on the New York Stock Exchange (THO), proudly traces its history back over 70 years to the pioneering days of the recreational vehicle industry with the founding of Airstream, the industry's oldest and most renowned brand. Our total commitment to quality and our philosophy of putting our customers first has led to our continuous growth.

Today, Thor is the largest builder of recreational vehicles. Thor's strong financial condition and years of solid growth are your assurance that we will be here to serve you for years to come. We think this extra peace of mind is important when you are making a significant investment. Because our customers are always #1 with us, we work harder than other manufacturers to satisfy you.

**FW**
Four Winds
INTERNATIONAL

P.O. Box 1486 • Elkhart, Indiana 46515-1486

Phone: 574-266-1111 • Fax: 574-294-8971

www.fourwinds-rv.com

