



## We Love Our DoubleTree RV...

I felt compelled to write and express my appreciation for my 2006 Elite Suites 36TK3. My wife and I tow with a 2006 Dodge one-ton truck and our fifth wheel is equipped with the TrailAir Air Pin Box and Center Point Suspension, it tows like a dream. We chose the Elite Suites because of the attention to detail and design. We so enjoy the comfortable floorplan and quality amenities, we feel like we are home. When we arrive at our destination we feel great and are excited to stay in such luxury.

Dale and Wanda in Columbia, MO

We have lived full-time in our Mobile Suites 36TK3 coach for just over two years and have thoroughly enjoyed the home-like amenities in our home on wheels. The "R" values have made for exceptional comfort in both summer and winter. "Dollar for Dollar" we don't think there is a better fifth wheel currently on the market.

Ron in Granbury, TX

Just a note to express how happy we are with our new Mobile Suites 36TK3. We had a great tour at the DoubleTree RV Factory. It was very informative and friendly. We purchased our unit in April of 2007 and it's the first trailer we have owned that's been trouble free - been camping all summer. It's very comfortable and we've received many compliments on it. We would recommend this unit to anyone.

Bob and Lou in Ontario Canada

Greetings from my rolling condominium that I call the Snaffle Shack. I continue to be impressed with the construction and design of my Mobile Suites unit. As a AQHA horse show enthusiast I really appreciate the ease of set-up and as a non-mechanical person, except for periodic maintenance, my unit has proven to be hassle free. When we're on the show grounds all day, it's wonderful to know we can always retreat to the convenience and restful comforts of our Mobile Suites coach.

Allen in North Carolina

My Mobile Suites defines the highest standards of RV travel, designed with sufficient storage, for the full-timer as well as the weekend. Comfort combined with beautiful appointments contribute to the homelike atmosphere of my Mobile Suites 36CK3. With the many standard package items included, I would consider this to be the best RV available today.

Tommy in Sonora, TX

5/8" T/G exterior plywood is glued and screwed to the aluminum floor framing, then bolted to the steel frame.



Aluminum sidewall is bolted to the floor.



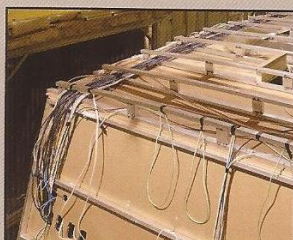
Heavy duty steel frame creates a basement for extra thick R27 floor insulation system.



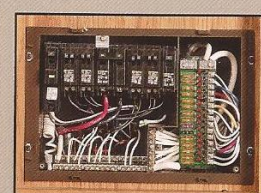
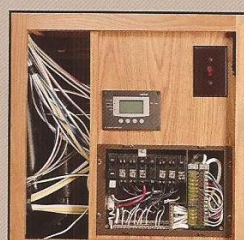
High strength aluminum welded bow roof rafters accommodate extra thick R23 roof insulation system.



3 1/4" thick sidewalls with two moisture barriers and R13 insulation results in increased efficiency of heating/cooling, and better sound insulation qualities.



Automotive type 12V A/C wire along with heavy wiring provides all the power to live comfortably in your Suite. A centralized command center allows ease of operation.



**Premium Package Option**  
Fully integrated infrared control \*\*



15" frame depth provides incredible strength as well as space for R27 floor insulation. (Select Suites 12" I-beam frame)

Our frames are engineered to accommodate the largest capacity water holding tanks in the industry. (See specifications for capacities)

Our powerful hydraulic system is integrated into the frame providing for smooth, reliable operation of power expansions and leveling jacks.



Heavy duty industrial front and rear hydraulic jacks are installed at a 5° angle to provide for maximum stability.



Heavy duty industrial hydraulic pump powers the leveling jacks and sliderooms with independent controls.



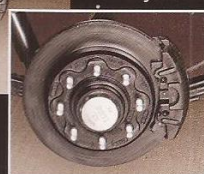
Water distribution manifold system for even water flow throughout the Suite. Conveniently select individual lines for easy maintenance.



Conveniently located multi-function hook-up center.



Regroovable heavy duty Goodyear® tires and aluminum eight bolt wheels.\*



**DoubleTree RV cares about your safety...** that's why we factory install the Kodiak® automotive style disc brake system\* providing for:

- smoother stopping♦
- significantly shorter stopping distances♦
- lower maintenance costs♦

♦When compared to Drum Brakes



Equa-Flex®, by TrailAir®, smooths out the rough roads and protects the unit and its contents. (Standard on all units)



# DoubleTree RV... New Advances in Engineering Excellence

**FEATURES & BENEFITS** Step into a DoubleTree RV with confidence. From the ground up, all units are built with automotive style components. Our innovative designs make it easier to transport, set up, and maintain your unit.

## Structure

- F:** Professionally designed and tested 15" steel box tube chassis. (Select Suites - 12" I-beam frame)
- B:** Super strong foundation to build a lasting, high quality fifth wheel.
- F:** All-weather heavy duty aluminum floor system.
- B:** The floor is screwed and bolted together and will not rot over time. Also, we do not use staples which eventually work up through the floor covering.
- F:** R-27 insulated frame floor system with three weather barriers.
- B:** Warm floors for extended or full time use: and keeps out condensation.

## Technology

- F:** New state of the art industrial hydraulic system.
- B:** Delivers maximum power to operate slide rooms, bed lifts, rear stabilizer jacks, front leveling jacks as well as greater convenience when connecting and disconnecting the fifth wheel.
- F:** New automotive style Kodiak disc brakes.\*
- B:** Limited lifetime warranty; smoother stopping; shorter stopping distance; low maintenance cost.
- F:** Heavy duty 8,000 axles with sealed automotive bearings and EquaFlex rubber equalizer.\*
- B:** Larger carrying capacity; less axle problems; low maintenance; best ride quality available.
- F:** Heavy duty Goodyear tires and aluminum eight bolt wheels.\*
- B:** Highest quality tire manufactured for RV's. Special tread pattern to dissipate heat. Tires are regroovable for miles and miles of safe use. Wheels are light weight and will not rust.
- F:** Greasable suspension with bronze bushings.
- B:** Ease of maintenance and long-wearing.

## Sturdy

- F:** 3.25" aluminum framed walls with R-13 insulated rating. Highest R rating in the industry.
- B:** Lightweight; lower heating and cooling cost; noise reduction
- F:** Radiused aluminum roof rafters on 16" centers.
- B:** Lightweight; improved water run off; maximum load capacity per square foot.
- F:** R-23 insulated roof system with plywood and rubber or fiberglass covering.
- B:** Improved weather barrier; sound deadening; low maintenance; lower heating and cooling costs.
- F:** Soft touch interior ceiling.\*\*
- B:** Sound proofing; easy to clean; extra insulation.

## Refined

- F:** Conveniently located wall switches control all lighting.
- B:** Fingertip control of all task and decorative lighting.
- F:** Overhead room lighting on dimmer switches.
- B:** Personal light control.
- F:** Designer cabinets throughout the unit.
- B:** Optimal storage and convenience.

## Reliability

- New industrial hydraulic jacks.
- High pressure hydraulic lines with metal fittings.
- New individual push button slide room controls.
- New industrial stabilizer jacks located and wind tested to provide maximum stability.
- Heavy gauge UL copper wiring.
- New residential water manifold.
- Convenient lights at all exterior service locations.
- New safe and reliable LED lights.
- Mid unit turn indicator.
- Gel coat fiberglass walls and exterior doors.
- New structural, 36 month warranty.
- 1/2" plywood roof decking.
- Extra sound proofing in floor, walls and roof.
- Engineered back up lights.\*\*
- Tip out tinted safety windows.
- Over sized entry step.
- New automotive disc brakes.
- Pull out battery and LPG bottle trays.\*\*
- Over size basement storage doors with gas lift cylinders.
- Furnace return air replaceable filter.
- New automotive painted exterior graphics.
- Tough skin special coated rock guard.\*\*

\*Available Option on Select Suites \*\*Not Available on Select Suites

NOTE: Some features shown are exclusive to specific makes and models. Please review the complete Standards and Options list for availability.



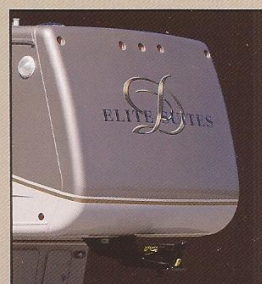
The heating and A/C system, featuring automatic dual zones for comfort, received the "standard of excellence" award for best design and performance. The attractive soft touch ceiling combines durability, sound proofing and an added measure of insulation.



Contemporary design fiberglass rear cap and detachable ladder.



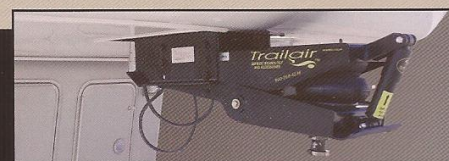
Automotive L.E.D. stop, turn, tail and clearance lights for reliability, greater visibility and safety.



Aerodynamically shaped front fiberglass cap designed for maximum fuel efficiency.



Abundant basement storage for extended living.



DoubleTree RV installs an optional TrailAir® air pin box. Trailair utilizes noise, vibration and harshness testing to engineer a smoother ride and better handling.

**Coach-Net®**

EMERGENCY ROADSIDE ASSISTANCE  
is provided with purchase of each Suite



Mobile Suites 36TK3 (Oak)



Breakfast with a view... beautiful!



DoubleTree's Premium Surround Sound Package puts you in control from anywhere in the suite.

- Samsung LCD HDTV (32" or 40")
- Sony 900 watt home theater system with 5 – 1 surround sound
- Sony five disc DVD/CD player
- IR (infrared) universal remote
- iPod docking station
- CAT5 wiring (Ethernet)
- XM satellite radio ready
- Custom built TV cabinet with lift up TV

## Décor Selections

*The Look of  
Sophistication*

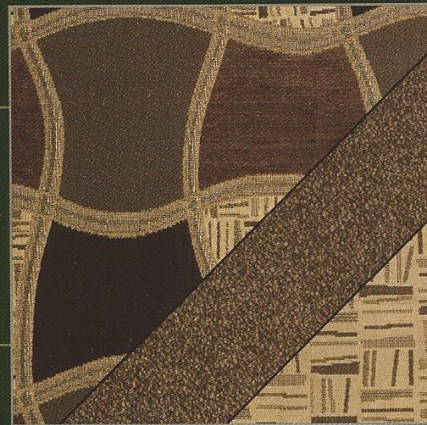
*Oak*  
(standard)



*Maple*  
(optional)



*Charcoal*





Mobile Suites 36TK3



Optional leather. There's nothing like it. Push back in your deluxe recliner and relax.

The classic look of etched smoked glass makes this privacy pocket door to the bed/bath both functional and decorative.



This bedroom includes a cedar lined wardrobe, slide-a-way vanity mirror, day/night shade system, and an optional LCD HDTV. A built-in shoe rack is available in some models.



# MOBILE SUITES

Everywhere you look you'll find quality innovations and aesthetic beauty. It's not just what you see that sets DoubleTree RV ahead, it's what you don't see. Superior structure, automotive technology as well as quality control are engineered into each and every Mobile Suite.



Before retiring to the luxury of your king, or optional queen size bed, relax in this suite's one-piece fiberglass shower with custom radius shower door. The shower also features a skylight with privacy shade.

Plenty of additional under-bed storage space is easily accessed with the aid of power gas lift arms.

## Residential Style Livability and Convenience

Designed with your comfort in mind, our suites feature standards and options available exclusively from DoubleTree RV.



Optional washer and dryer.



A DoubleTree RV **exclusive**, the contemporary look of stainless steel showcases the large capacity of this side-by-side refrigerator/freezer.



Full length pantry provides abundant storage and features a pantry slide for even greater capacity.

## Merging Refinement and Reliability

### Engineering Excellence

DoubleTree RV cares about your safety... that's why we factory install the Kodiak® automotive style disc brake system providing for:

- smoother stopping\*
- significantly shorter stopping distances\*
- lower maintenance costs\*

\*When compared to Drum Brakes



Regroovable heavy duty Goodyear® tires and aluminum eight bolt wheels.



Equa-Flex®, by TrailAir®, smoothes out the rough roads and protects the unit and its contents.



### Coach-Net®

EMERGENCY ROADSIDE ASSISTANCE is provided with purchase of each suite



DoubleTree RV installs the Trailair® air pin box. Trailair utilizes noise, vibration and harshness testing to engineer a smoother ride and better handling.

## We Lead, They Follow



DoubleTree RV - Howe, Indiana

### DoubleTree RV

0160 W 750 N • PO Box 235 • Howe, IN 46746

Reservations: 260-562-1075

[www.doubletreervsuites.com](http://www.doubletreervsuites.com)

When DoubleTree RV began they used a simple philosophy: find out what the consumers want and exceed their expectations. Attention to detail starts from the ground up.

DoubleTree RV fifth wheels continue to set the standard for the industry and the new models are exactly what the name says... *suites*. And the best part is, they are built for you.

This brochure is based upon the latest product information available at the time of printing. DoubleTree RV reserves the right to make changes at any time to prices, colors, materials, equipment, specifications and models, and to discontinue models without notice or obligation. Color representations are as close as photographic/print reproduction will allow. All specifications are approximate and dimensions nominal. Text and/or photos may represent equipment or décor items which may not be included as a standard item in your model of choice.

12/17/07 15M