

**NEWMAR**<sup>SM</sup>  
**KOUNTRY STAR**  
2008 DIESEL MOTORHOME



Comfort Drive  
STEERING



KOUNTRY STAR



# Life on the Highway Never Looked This Good

The 2008 Kountry Star offers easy living wherever you roam. Luxury, style, effortless beauty, top-notch RV living. With Newmar craftsmanship, you can rely on the Kountry Star to be as durable as they come. And plentiful amenities help you ease on down the road in comfort—the way your travels were meant to be enjoyed.





#### FRONT-ROW ENTERTAINMENT

In the living area, an overhead 32-inch, LCD color TV offers entertainment options for those onboard.



#### YOUR VERY OWN CAFÉ

The hidden-leaf dinette table with two fixed chairs (and two folding chairs) provides a cozy area for eating meals or enjoying other activities.



#### KITCHEN AMENITIES

The nine-cubic-foot Dometic® refrigerator features an attractive hardwood, raised-panel front that blends in nicely with the rest of the kitchen cabinetry.



#### PULLOUT PANTRY

The pullout pantry provides easy access to items stored in the cupboard.



**KOUNTRY STAR**  
2008 DIESEL MOTORHOME



# Living It Up

The living area of the Kountry Star provides plenty of space to accommodate any activities you engage in—from reading to relaxing to entertaining. The Flexsteel® sofa offers plush comfort, while the optional simulated ceramic flooring adds a tasteful look to the surroundings.

Shown in 3623 floorplan with Caramel Décor and Coastal Cherry Hardwood Cabinetry.



#### BEDROOM AMENITIES

The bedroom features generous cabinets and a 26-inch LCD television that's ready to entertain.



#### WARDROBE

The cedar-lined wardrobe with mirrored doors offers additional storage space to house your possessions.



#### BATHROOM AMENITIES

In the lavatory, solid-surface countertops feature an integrated bowl, and the rain-glass shower door provides an added touch of refinement.

## A Good Night's Rest

When you're ready to retire for the night, the Kountry Star's bedroom greets you with the comforts of home. A King bed. An optional, luxurious pillowtop mattress. A 26-inch LCD TV. And, so you don't have to leave anything behind, the cabinets and space beneath the bed provide plenty of storage for your personal belongings.



**KOUNTRY STAR**  
2008 DIESEL MOTORHOME





#### IN THE CAPTAIN'S CHAIR

The Ultraleather driver and passenger seats in the cockpit provide maximum comfort with optional heated seats.



#### SCREEN DOOR

The screen door allows easy entrance into and exit from the Kountry Star.

# Sit Back and Take Control

The Kountry Star's cockpit makes it easy to take command. Comfortable Flexsteel® Ultraleather seats feature six-way power adjustment, power lumbar and Ergo-Flex arms. And a rearview color monitor system adds additional convenience and safety.



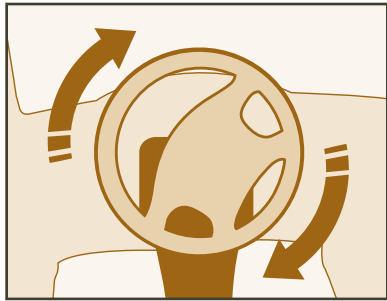
**KOUNTRY STAR**  
2008 DIESEL MOTORHOME





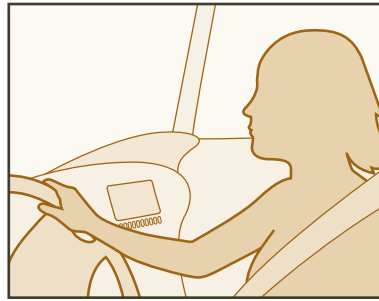
# Comfort Drive™

STEERING



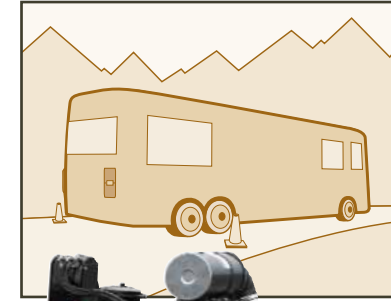
#### AUTO-CENTERING

Regardless of the position of the steering wheel, even after a hard turn, it always returns to center automatically.



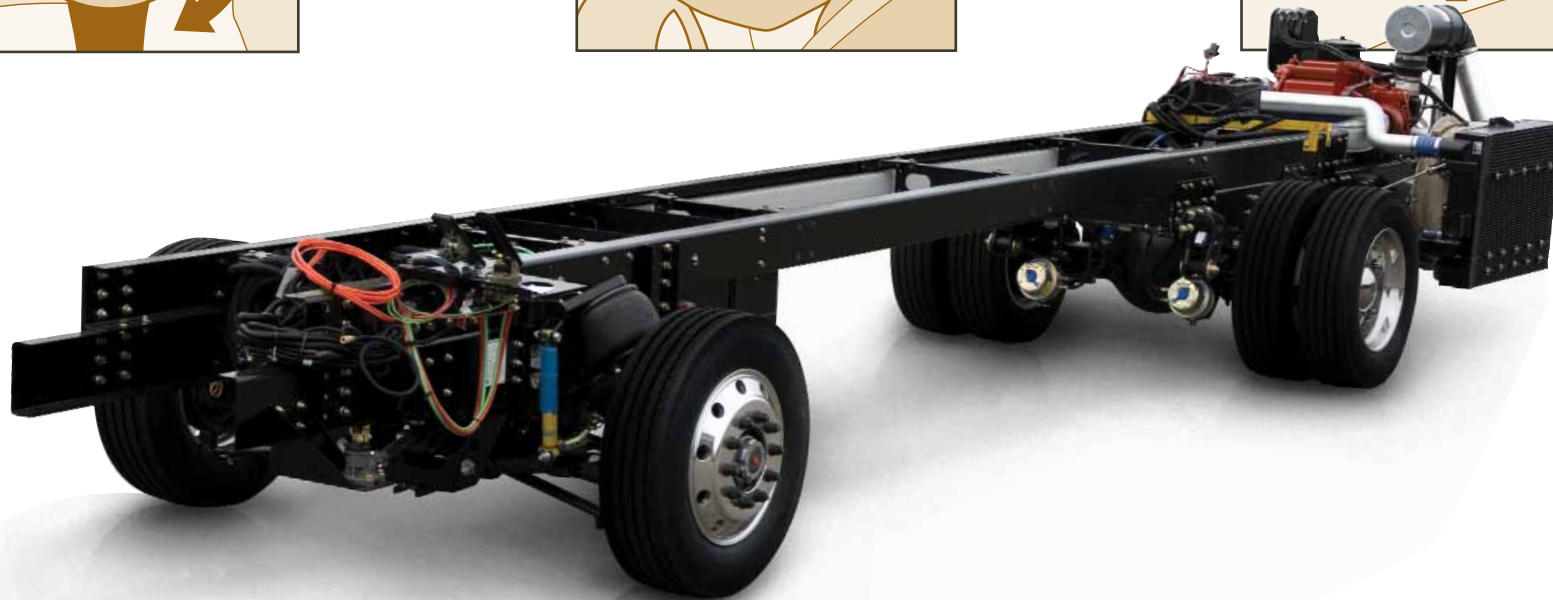
#### EASY TURNING

The Comfort Drive steering system seriously reduces the effort required in handling your coach.



#### BACKING UP

Comfort Drive makes backing into your campsite a much easier task through reduced effort and auto-centering.



## Spartan® Mountain Master Chassis with Comfort Drive

Together, the powerful Spartan Mountain Master diesel pusher chassis and our exclusive Comfort Drive™ steering system provide superior ride and handling and excellent driving performance. The Mountain Master chassis is one of the most reliable chassis on the market, backed by a 36-month, 50,000-mile, no-deductible warranty, including roadside assistance. Comfort Drive steering reduces the driver's efforts in taking the wheel and controlling the coach in situations such as parking, cornering and backing up, automatically correcting steering to improve maneuverability.





**CEILING: R-VALUE = 16**

- a. BriteTEK™ Roof
- b. 9mm Wood Decking
- c. Fiberglass Batten Insulation
- d. A/C Ducting
- e. Aluminum Roof Truss
- f. Kraft Paper Vapor Barrier
- g. 3/8" Bead Foam
- h. 3/8" Panel
- i. Padded Vinyl Overlay

**WALLS: R-VALUE = 11**

- j. 3/8" Plywood Interior Wall
- k. 3/8" Bead Foam
- l. Kraft Paper Vapor Barrier
- m. Fiberglass Batten Insulation
- n. 3/8" Plywood Exterior Wall
- o. Composite One-piece Gelcoat Exterior Sidewall
- p. 16" On-center Aluminum Framing with 3 1/2" Header

**FLOORING: R-VALUE = 16**

- q. Carpet/Tile
- r. Carpet Padding
- s. 3/8" Floor Decking
- t. Fiberglass Batten Insulation
- u. 2" x 3" Wood Framing
- w. Foam Panels (Noise Protection)
- x. Aluminum Ducting

**BASEMENT: R-VALUE = 4 (INCLUDED IN FLOOR R-VALUE)**

- y. Cargo Liner
- z. 3/8" Floor Decking
- aa. 3/8" Luan Panel
- bb. 1 1/2" Bead Foam
- cc. Aluminum Sheeting (Prevents Distortion)

- 1. 13.5M Penguin™ Heat Pump Central Air Conditioners (2)
- 2. One-piece Windshield
- 3. Coated Aluminum Wheels
- 4. Double-pane Tinted Safety-glass Windows
- 5. Side-hinged Baggage Doors with Optional Pullout Tray

**Newmar Total Comfort™ Central Air Conditioning**

Experience RV air conditioning just like that found in site-built homes. Newmar's Total Comfort Central Air Conditioning is actually two separate, fully ducted systems: one to distribute incoming cool air, the other to quickly and effectively remove warm air from every living area.



**Protected C-channels**

To keep the electrical wiring that runs through holes in the aluminum-frame C-channels from chafing, each hole is ringed with a rubber grommet.



**Sikaflex®**

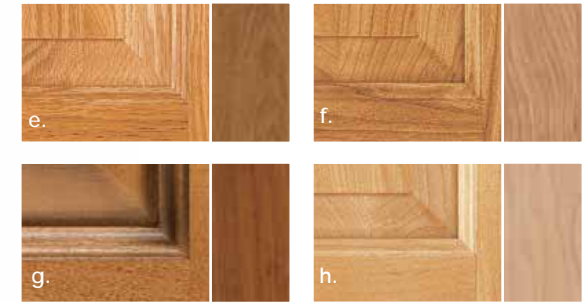
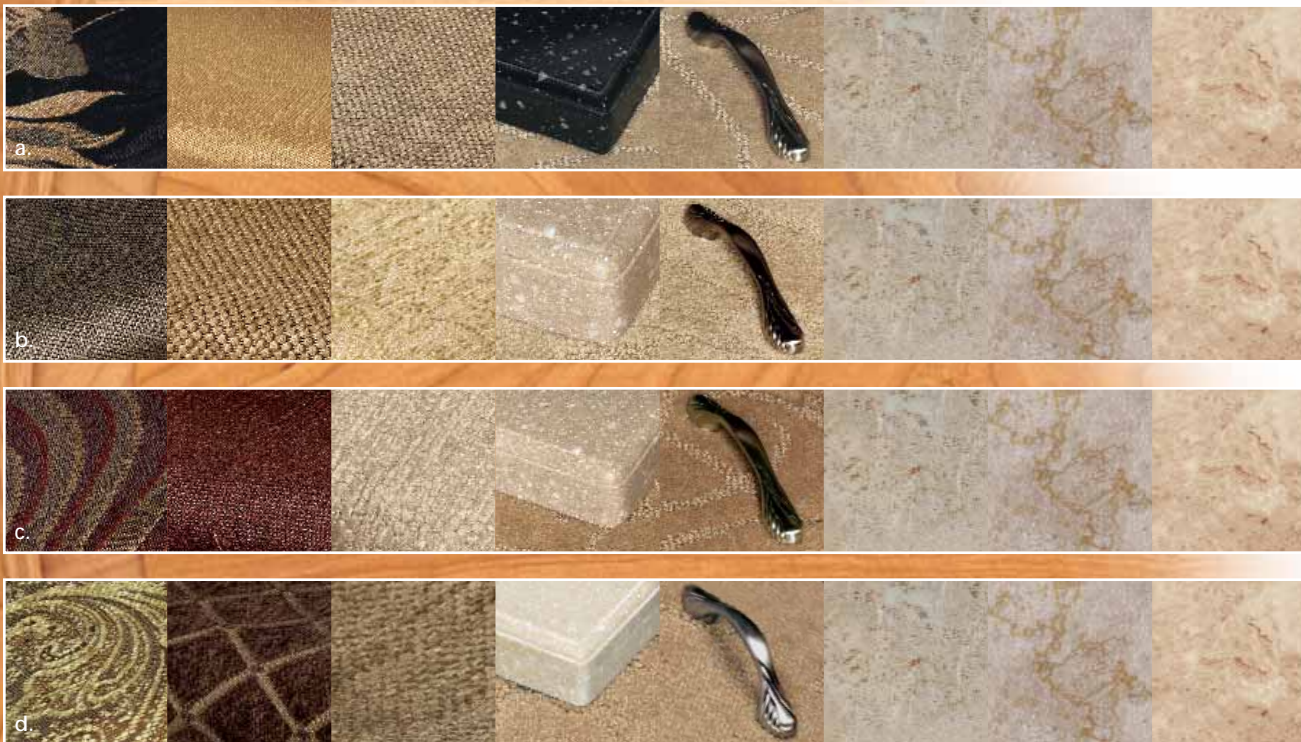
Used throughout Newmar construction, Sikaflex elastic adhesive is one of the strongest bonding agents on the market today. It also serves as a sealant against air and water. And it helps dampen both sound and vibration.

**16" On-center Framing**

Just like a fine site-built residential home, your Newmar home is framed 16 inches on center, which allows the best placement of outlets, switches and other components.



**KOUNTRY STAR**  
2008 DIESEL MOTORHOME



#### WOOD FINISHES & INTERIORS

- a. Black Opal Color Scheme with flooring options (left to right): simulated marble (standard), simulated ceramic tile, ceramic tile and simulated plank (shown with matching cabinetry)
- b. Caramel Color Scheme with flooring options (left to right): simulated marble (standard), simulated ceramic tile, ceramic tile and simulated plank (shown with matching cabinetry)
- c. Cranberry Color Scheme with flooring options (left to right): simulated marble (standard), simulated ceramic tile, ceramic tile and simulated plank (shown with matching cabinetry)
- d. Pistachio Color Scheme with flooring options (left to right): simulated marble (standard), simulated ceramic tile, ceramic tile and simulated plank (shown with matching cabinetry)
- e. Tucson Oak Cabinetry, Standard
- f. Coastal Cherry Hardwood Cabinetry, Optional
- g. Ginger Maple Hardwood with Glazed Cabinet Doors, Optional
- h. Summer Maple Hardwood Cabinetry, Optional

#### Newmar Express Limited Warranty

Every Kountry Star Diesel Pusher is backed by Newmar's one-year limited warranty/unlimited miles. Ask your Newmar dealer for details.

#### The Limited Five-Year Structural Warranty

If any part of your Newmar recreational vehicle superstructure (which is the steel/aluminum structure of the sidewall, roof or frame) fails to perform properly within five years, from the date of purchase, due to faulty workmanship or material supplied by Newmar, it will be repaired without charge for either parts or labor by Newmar. This structural warranty is available only to the original purchaser and is non-transferable.

#### Full-Paint Masterpiece Finish™

Newmar's Full-Paint Masterpiece Finish raises the exterior beauty and durability of our motorhomes to a whole new level. This model year, we're offering our richest-looking graphics ever—to lend even more character and class. As industry leaders in applying full body paint to motorhome coaches, we at Newmar are pleased to offer the Full-Paint Masterpiece Finish as a Kountry Star Diesel Motorhome standard.

Some features shown in our literature are optional. Colors and finishes are photographic representations. The actual materials may look different. Prices, specifications and floorplans are subject to change at Newmar's discretion, without prior notice or obligation. Please see your dealer for actual samples and specifications.



BLACK OPAL

CARAMEL

CRANBERRY

PISTACHIO

## The Newmar Touch

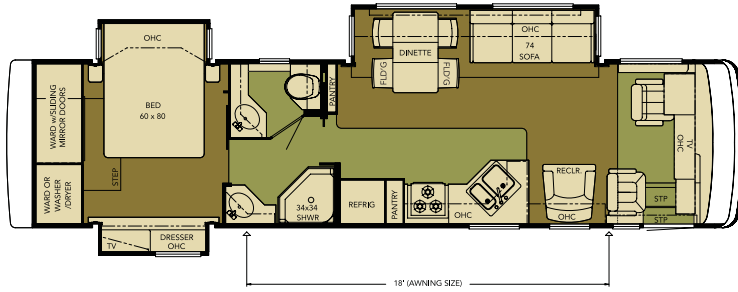
We craft every motorhome with a special attention to detail, no matter how small or large. From the feel of the fabric, to the smooth touch of the custom-built cabinets, to our selection of color options. Every little detail and finishing touch contributes to the overall style and comfort of each motorhome. Whether you look from afar or study them up close, you'll notice the Newmar difference.

# Floorplans and Options

## KSDP 3623

Length: 36' 9"  
Width: 101.5"

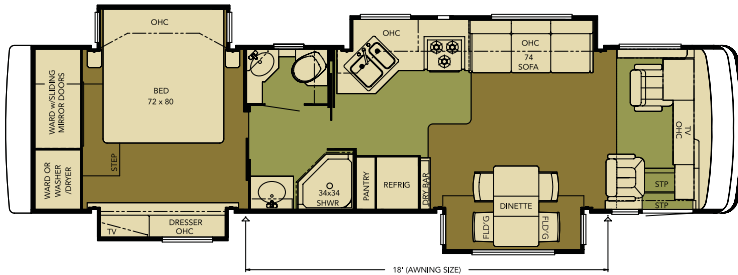
Options: K125-2,  
K273, K541\_1



## KSDP 3624

Length: 36' 9"  
Width: 101.5"

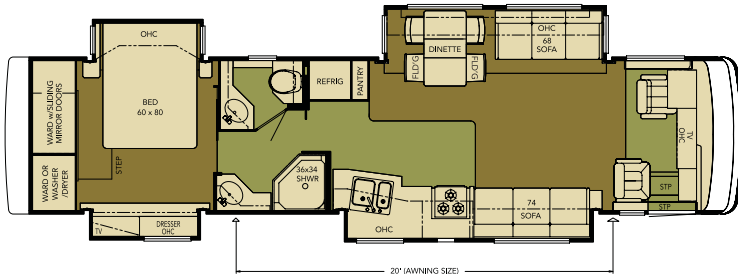
Options: K031,  
K125\_5, K273\_1,  
K541\_3



## KSDP 3910

Length: 39' 2"  
Width: 101.5"

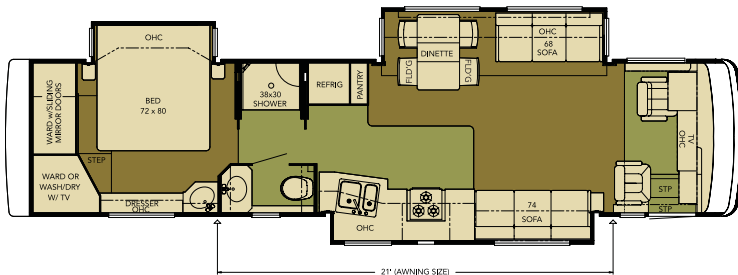
Options: K125\_2,  
K201, K276,  
K541\_1, K621



## KSDP 3912

Length: 39' 2"  
Width: 101.5"

Options: K031,  
K125\_2, K201,  
K276, K541\_1



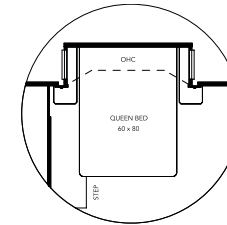
## J583

Modular  
Entertainment Center  
3916



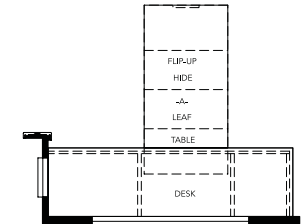
## J583\_2

Modular  
Entertainment Center  
3943



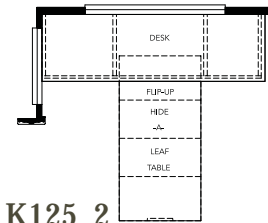
## K031

Queen Bed ILO King  
3624, 3912, 3916



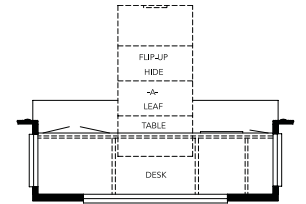
## K125\_1

Combo Desk/Dinette  
3916



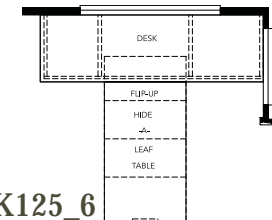
## K125\_2

Combination Desk  
3623, 3910, 3912, 3943



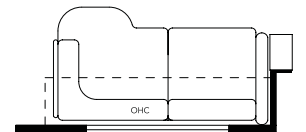
## K125\_5

Combination Desk  
3624



## K125\_6

Combination Desk Dinette  
3960

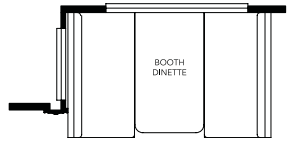


## K201

72" L-Lounge Sofa  
3910, 3912, 3943

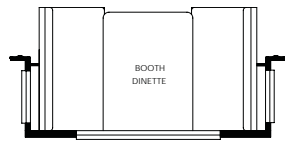


**KOUNTRY STAR**  
2008 DIESEL MOTORHOME



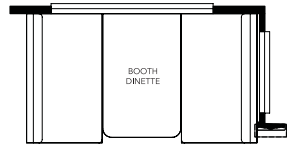
**K273**

Booth Dinette  
3623, 3943



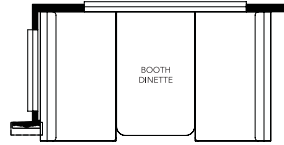
**K273\_1**

Booth Dinette  
3624



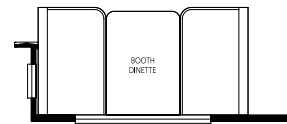
**K273\_4**

Booth Dinette  
3960



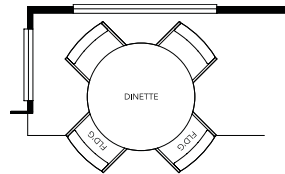
**K276**

Booth Dinette  
3910, 3912



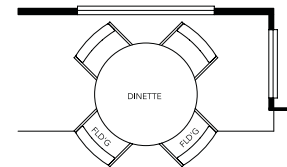
**K276\_1**

Booth Dinette  
3916



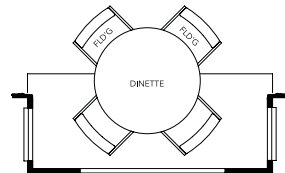
**K541\_1**

Round Dinette  
3623, 3910, 3912, 3943



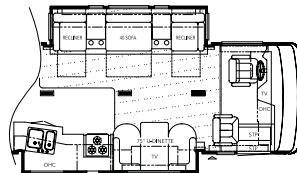
**K541\_2**

Round Dinette  
3960



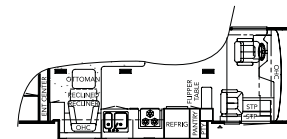
**K541\_3**

Round Dinette  
3624



**K621**

Theater Seating Option  
3910

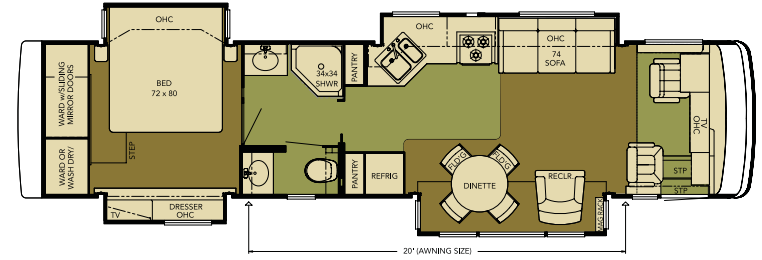


**R105\_KS3960**

Power Lock Arms  
3960

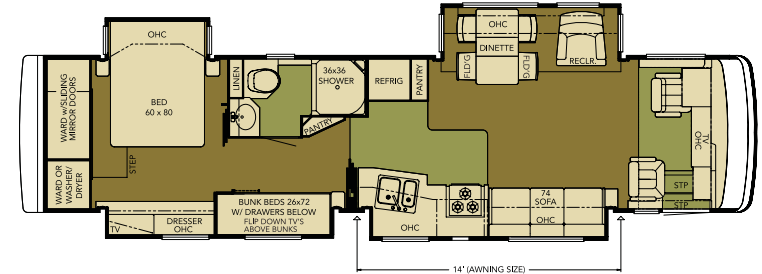
**KSDP 3916**

Length: 39' 2"  
Width: 101.5"  
Options: J583,  
K031, K125\_1,  
K276\_1



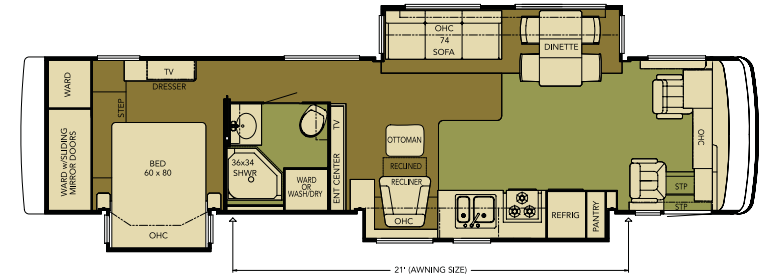
**KSDP 3943**

Length: 39' 2"  
Width: 101.5"  
Options: J583\_2,  
K125\_2, K201,  
K273, K541\_1



**KSDP 3960**

Length: 39' 2"  
Width: 101.5"  
Options: K125\_6,  
K273\_4, K541\_2,  
R105\_KS3960



■ Carpet     ■ Simulated Marble Flooring

# Standard Features

## CHASSIS FEATURES

- Spartan® Mountain Master Chassis with IFS
- Cummins® ISC 360 hp with Side Radiator
- Two-stage Compression Brake
- Electric Leveling Jacks with Automatic Control
- Cruise Control
- Comfort Drive™ Steering
- Manual Tilt and Telescope Steering Column
- Coated Aluminum Wheels
- Recessed Fuel Fills with Crossover to Fill from Either Side
- Back-up Alarm
- Anti-lock Braking System
- Electronic Chassis Information Center in Dash

## AIR CONDITIONING & HEATING

- Two 13.5M Penguin™ Heat Pump Central Air Conditioners
- Propane Furnace with In-floor Ducted Heat
- Dash Heater and High-output Air Conditioner
- Propane Leak Detector

## APPLIANCES & ACCESSORIES

- 30" Convection Microwave
- Three-burner Cooktop with Piezo Ignition
- Solid-surface Range Cover
- Dometic® 9 cu. ft. Refrigerator
- Hardwood Raised-panel Refrigerator Front
- 10 gal. Gas/Electric Water Heater Direct-spark Ignition
- One-piece Washer/Dryer Prep
- 32" LCD TV in Living Area
- 26" LCD TV in Bedroom
- 10" Flip-down LCD TV/DVD and Headphones at Each Bunk Bed\*
- AM/FM Dash Radio with MP3 Adapter and CD Player
- Sony® Surround Sound Home Theater System with Single-disc DVD Player
- Rearview Color Monitor System
- TV Antenna with Power Booster
- Satellite Prep—Phone, TV Jack and Receptacle
- TV Antenna "Up" Warning Signal
- Telephone Connection with Phone Jacks in Living and Dash Area
- Cable TV Connection with Rg6 Coax
- Two Bedroom Radio Speakers with On/Off Switch
- Roof-mounted Air Horns
- 10 Bc Fire Extinguisher, Carbon Monoxide and Smoke Detectors

## CABINETS & FURNITURE

- Oak Cabinets with Raised-panel Arched Cabinet Doors
- Hidden-leaf Dinette Table with Four Chairs (Two Fixed, Two Folding)\*
- Round Hardwood Dinette Table with Two Fixed and Two Folding Chairs\*
- Solid-surface Countertop in Kitchen with Undermounted Acrylic Sink and Flush Sink Covers
- Solid-surface Countertop in Bathroom with Integrated Bowl
- Residential-style Full-extension Ball-bearing Drawer Guides
- Flexsteel® Furniture
- Pullout Pantry Shelves\*
- Ultraleather Driver/Passenger Seats with Six-way Power, Power Lumbar, Ergo-Flex Arms and Passenger Footrest
- Lifts on Bed Top to Access Storage Area
- Tufted Mattress with Quilted Bedspread, Reverse Shams and Accent Pillows
- King Bed\*

## ELECTRICAL FEATURES

- 8.0 kW Cummins Onan® Diesel Quiet Series Generator
- 50 Amp Electrical Service with Flexible Cord
- Four 6 Volt House Batteries on Pullout Tray
- Battery Disconnect Switch
- 110 Volt Exterior Receptacle
- 5 Watt Solar Panel
- 2,000 Watt Inverter
- Emergency Start Switch
- Exterior Security Light on Each Side
- Midship Side Turn Signals
- Switched Receptacle for Engine Block Heater
- Fluorescent Lights in Ceiling and Overhead Cabinets
- Lighted Wardrobes
- Slideout Information Voice Module
- Manually Operated Hold-to-Run Slideout Switch
- ICC Light Flasher Switch
- Two 12 Volt Auxiliary Receptacles on Dashboard
- Exterior TV Jack
- Interior Courtesy Lights

## EXTERIOR FEATURES

- Full-Paint Masterpiece Finish™ with Diamond Shield Front Protective Film
- One-piece Windshield
- Convex Exterior Mirrors with Remote Control, Defrost and Turn Signals
- Entrance Door with Automatic Double Step
- Power Flush Stepwell Cover

- Lighted Exterior Storage Compartments with Cargo Liner, Controlled by Interior Master Switch
- 10,000 lb. Towing Hitch with Two Extra 14 Gauge Wires
- Lighted Acrylic Assist Handle at Entrance Door
- Rear Protective Full-width Tow Guard
- Rear Ladder
- Undercoating
- Mud Flaps

## INTERIOR FEATURES

- Padded Vinyl Ceiling
- Day/Night Pleated Window Shades and Lambrequins
- Mini Blinds in Kitchen and Bathroom Areas
- Simulated Marble Floor in Kitchen, Bathroom and Entrance Area
- Deluxe Carpeting with High-density Padding in Living Room and Bedroom
- Flat-panel Interior Passage Doors
- Interior Assist Handle at Main Entrance Door
- Sun Shades on Driver and Passenger Side Windows
- Power-activated Sun Visors
- Vertical Drop-down Windshield Area Privacy Shade

## PLUMBING & BATH FEATURES

- Demand Water System with SHURflo® Pump
- Sewage Holding-tank Rinse
- Water Heater Bypass System
- Thetford™ Aqua Magic Plus China Bowl with Spray Attachment
- Towel Bars, Tissue Holder and Robe Hook
- Fiberglass Tub/Shower with Glass Shower Door
- Monitor Panel
- Water Pump Switches Located in Bathroom, Kitchen and Exterior Near Gate Valves
- Exterior Shower
- Water Filter for Entire Unit

## WINDOWS, AWNINGS & VENTS

- Double-pane Tinted Safety-glass Windows
- Fan-Tastic® Vent with Rain Sensor in Kitchen and Bathroom Areas
- Skylight in Bathroom
- A&E® 9000 Side Awning
- A&E Slideout Awning Covers
- Cockpit Overhead Ventilation System

# Optional Features

## CHASSIS FEATURES

- Cummins 400 hp ISL Engine (39' Floorplans)
- Hydraulic Leveling Jacks with Single Touch Control

## AIR CONDITIONING & HEATING

- Auxiliary Heater in Bedroom

## APPLIANCES & ACCESSORIES

- Three-burner Range with Oven and Piezo Ignition
- Dometic 12 cu. ft. Refrigerator with Ice Maker
- Norcold® 12 cu. ft. Four-door Refrigerator with Icemaker and Water Dispenser
- Icemaker Added to Refrigerator\*
- Norcold Freezer on Pullout Tray
- One-piece Washer/Dryer\*
- Two-piece Washer/Dryer\*
- SIRIUS® Satellite Radio Capability (Does not include monthly subscription)
- 10-disc CD Player
- External Entertainment Center with 26" LCD TV and AM/FM Radio and CD Player
- 26" LCD TV at Dry Bar\*
- Automatic Satellite without Receiver
- In-motion Satellite without Receiver
- Sideview Cameras
- CB Radio with Antenna
- CB Antenna

## CABINETS & FURNITURE

- Summer Maple Hardwood Cabinets
- Coastal Cherry Hardwood Cabinets
- Ginger Maple Hardwood with Glazed Cabinet Doors
- Ultraleather Free-standing Swivel Rocker\*
- Ultraleather Swivel Rocker\*
- Ultraleather L-Lounge\*
- Ultraleather Sofa\*
- Ultraleather Magic Bed Sofa\*
- Ultraleather Hide-a-Bed Sofa with Air Mattress\*
- Ultraleather Theater Group Seating with U-Dinette and 32" LCD TV\*
- Heated Driver and Passenger Seats
- Booth Dinette with Seat Belts
- Combination Desk/Dinette Table with Two Fixed and Two Folding Chairs
- Round Hardwood Dinette Table with Two Fixed and Two Folding Chairs and Larger Dinette Window\*
- Storage Shelves Recessed into Rear Cap of Rear Wardrobe Floorplans
- Luxurious Pillowtop Mattress
- Queen Bed\*

\*CHECK WITH DEALERSHIP ON FLOORPLAN AVAILABILITY.



**KOUNTRY STAR**  
2008 DIESEL MOTORHOME

#### ELECTRICAL FEATURES

- Solar Prep
- Recessed Docking Lights
- Pre-wired for Freezer

#### EXTERIOR FEATURES

- Large Chrome Exterior Mirrors
- Large Storage Tray with Access from One Side or Either Side

#### INTERIOR FEATURES

- Simulated Ceramic Tile Floor or Simulated Plank Flooring in Kitchen, Bathroom and Entrance Area
- Ceramic Tile or Simulated Marble or Plank Flooring in Kitchen, Bathroom and Throughout the Main Living Area

#### PLUMBING & BATH FEATURES

- Assist Handle in Tub/Shower
- Fold-down Shower Seat
- 110 Volt Heat Pads for Holding Tanks

#### CONSTRUCTION FEATURES

- One-piece Molded Fiberglass Roof with 9mm Decking
- Power Lock Arms on All Slideout Rooms

#### WINDOWS, AWNINGS & VENTS

- A&E 9000 Bedroom and Slideout Window Awning
- A&E Oasis Manual Front Entrance Door Awning
- A&E Oasis Power Front Entrance Door Awning
- A&E Weather Pro Side Awning

\*CHECK WITH DEALERSHIP ON FLOORPLAN AVAILABILITY.

## Floorplan Specifications

FLOORPLAN	APP. OVERALL LENGTH <sup>1</sup>	WIDTH	APP. OVERALL HEIGHT	INTERIOR WIDTH	INTERIOR HEIGHT	GREY	SEWAGE	WATER	PROPANE	FURNACE	WATER HEATER
KSDP 3623	36' 9"	101.5"	12' 5"	95.5"	84"	65 gal.	45 gal.	105 gal.	32 gal.	42,000 Btu	10 gal.
KSDP 3624	36' 9"	101.5"	12' 5"	95.5"	84"	65 gal.	45 gal.	105 gal.	32 gal.	42,000 Btu	10 gal.
KSDP 3910	39' 2"	101.5"	12' 5"	95.5"	84"	65 gal.	45 gal.	105 gal.	32 gal.	42,000 Btu	10 gal.
KSDP 3912	39' 2"	101.5"	12' 5"	95.5"	84"	65 gal.	45 gal.	105 gal.	32 gal.	42,000 Btu	10 gal.
KSDP 3916	39' 2"	101.5"	12' 5"	95.5"	84"	65 gal.	45 gal.	105 gal.	32 gal.	42,000 Btu	10 gal.
KSDP 3943	39' 2"	101.5"	12' 5"	95.5"	84"	65 gal.	45 gal.	105 gal.	32 gal.	42,000 Btu	10 gal.
KSDP 3960	39' 2"	101.5"	12' 5"	95.5"	84"	65 gal.	45 gal.	105 gal.	32 gal.	42,000 Btu	10 gal.

## Spartan® Chassis Information

FLOORPLAN	ENGINE HP	AXLE RATIO	FUEL CAP.	WHEELBASE	FRONT GAWR <sup>2</sup>	REAR GAWR <sup>2</sup>	GVWR <sup>2</sup>	GCWR <sup>2</sup>	APP. UVW	APP. NCC
KSDP 3623	360	4.88	100 gal.	228"	12,000 lb.	20,000 lb.	32,000 lb.	42,000 lb.	25,175 lb.	6,825 lb.
KSDP 3624	360	4.88	100 gal.	228"	12,000 lb.	20,000 lb.	32,000 lb.	42,000 lb.	25,693 lb.	6,307 lb.
KSDP 3910	360 or 400	4.88	100 gal.	258"	12,000 lb.	20,000 lb.	32,000 lb.	42,000 lb.	26,554 lb.	5,446 lb.
KSDP 3912	360 or 400	4.88	100 gal.	258"	12,000 lb.	20,000 lb.	32,000 lb.	42,000 lb.	26,092 lb.	5,908 lb.
KSDP 3916	360 or 400	4.88	100 gal.	258"	12,000 lb.	20,000 lb.	32,000 lb.	42,000 lb.	26,170 lb.	5,830 lb.
KSDP 3943	360 or 400	4.88	100 gal.	258"	12,000 lb.	20,000 lb.	32,000 lb.	42,000 lb.	26,668 lb.	5,332 lb.
KSDP 3960	360 or 400	4.88	100 gal.	258"	12,000 lb.	20,000 lb.	32,000 lb.	42,000 lb.	26,334 lb.	5,666 lb.

#### SPARTAN MOUNTAIN MASTER CHASSIS

The Spartan Mountain Master and Mountain Master GT don't just lead the way, they pave it! Spartan's Mountain Master chassis is America's most popular, most reliable, highest-performing diesel pusher. Experience the power, the superior ride and handling and excellent driving performance your coach built on a Spartan Mountain Master chassis has to offer. The Mountain Master chassis provides excellent resale value and carries a 36-month, 50,000-mile, no-deductible warranty, which includes roadside assistance for the entire warranty period. Sit back and enjoy the ride!



Lengths, heights, widths and dry weights are approximate. Weight will vary based on optional equipment added to the above base weight.

<sup>1</sup> Lengths do not include the rear ladder.

<sup>2</sup> Specifications are supplied by the chassis manufacturer.

**GAWR:** Gross Axle Weight Rating is the maximum permissible weight for an axle.

**GCWR:** Gross Combination Weight Rating is the value specified by the manufacturer of the vehicle as the maximum allowable loaded weight of this motorhome and any towed trailer or towed vehicle.

**GVWR:** Gross Vehicle Weight Rating is the maximum permissible weight of a fully loaded motorhome.

**UVW:** Unloaded Vehicle Weight is the weight of this motorhome as built at the factory with full fuel, engine oil and coolants. The UVW does not include cargo, fresh water, LP gas or dealer-installed accessories.

**NCC:** Net Carrying Capacity is the maximum weight of all occupants, including the driver, personal belongings, food, fresh water, waste water, LP gas, tools, tongue weight of towed vehicle, dealer-installed accessories, etc., that can be carried by the motorhome.



KOUNTRY STAR  
2008 DIESEL MOTORHOME

## When You Know the Difference

At Newmar, we do more than just manufacture RVs. We enhance the RV lifestyle for our customers—in everything we do. From the luxury and details we proudly build into our products, to providing responsive customer service and support. From developing industry-leading innovations, to staying loyal and true in our everyday business practices. These are our values; this is the Newmar difference. As we celebrate 40 years of high-quality Amish craftsmanship, we look forward to many more years of building products that exceed your highest expectations and deliver the durability and quality that sets us apart from everyone else.

NEWMAR CORPORATION • 355 N DELAWARE ST • PO BOX 30 • NAPPANEE IN 46550-0030  
574-773-7791 • Fax 574-773-2895 • [www.newmarcorp.com](http://www.newmarcorp.com)

Some features shown in our literature are optional. Colors and finishes are photographic representations. The actual materials may look different. Prices, specifications and floorplans are subject to change at Newmar's discretion, without prior notice or obligation. Please see your dealer for actual samples and specifications. © 2007 Newmar Corporation. Printed in the U.S.A. (04/07)