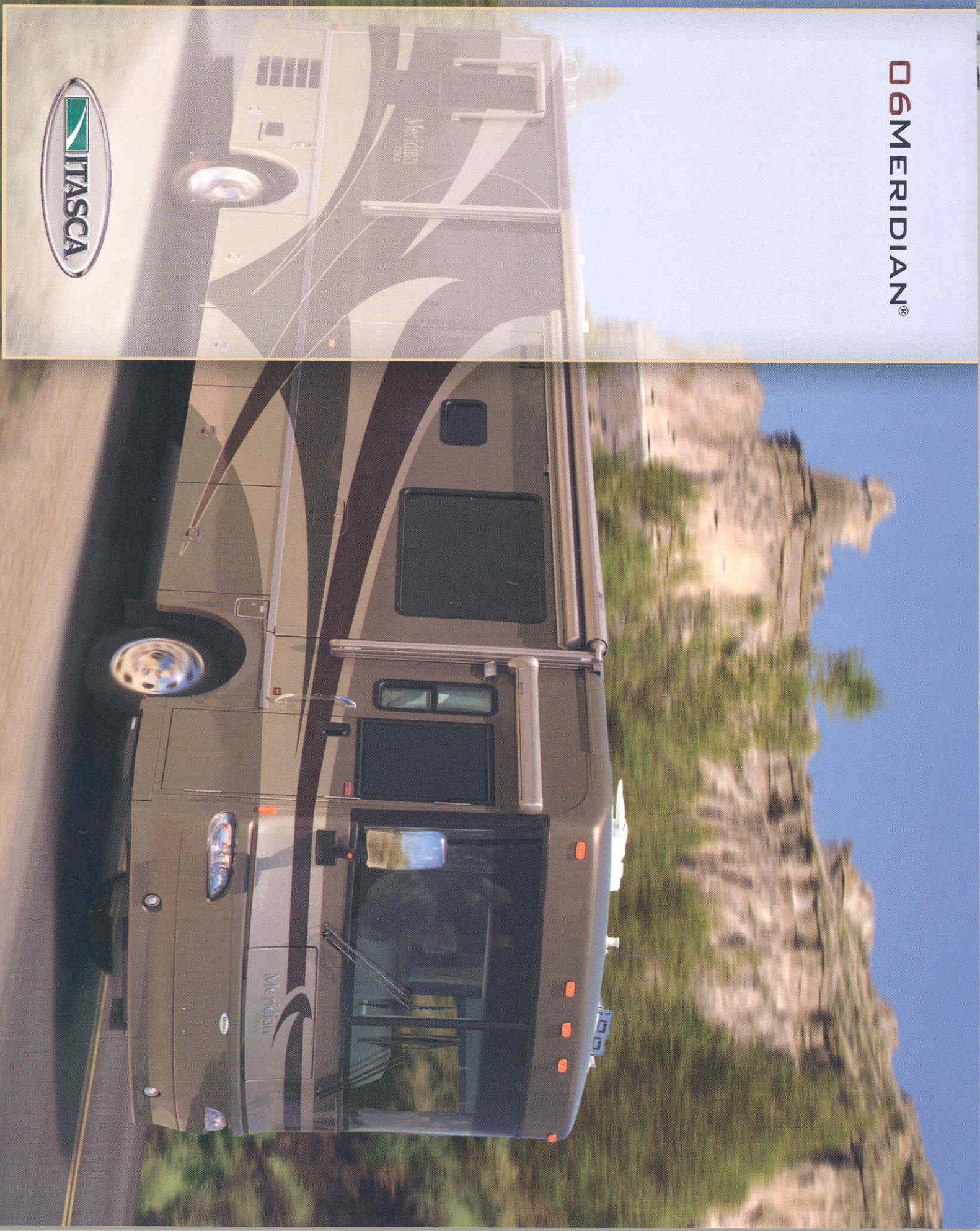
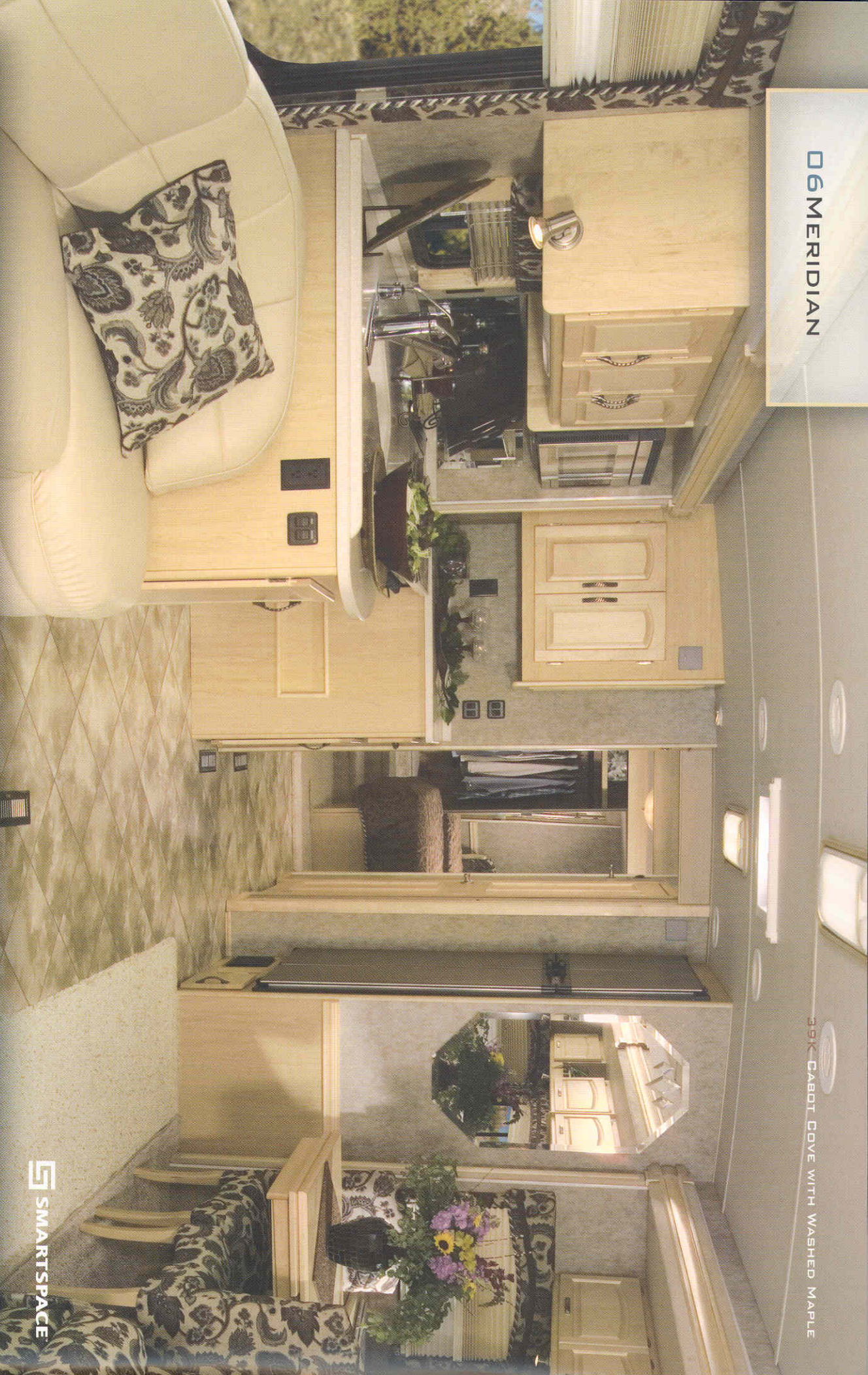


D6MERIDIAN®



06 MERIDIAN

39K CABOT COVE WITH WASHED MAPLE



NOW IS THE TIME FOR DIESEL LUXURY AND PERFORMANCE.

The power, performance and comfort of a full-featured diesel pusher are yours in the user-friendly 2006 Itasca Meridian. It all starts with a Freightliner® chassis, featuring a 350-hp Caterpillar® diesel engine with

Allison® transmission (300-hp Cummins® diesel on the 32T). Step inside and you'll see how we incorporate our SmartSpace™ design philosophy to maximize functionality and convenience while offering more user-friendly features. Choose from four models, three fabric options and four wood choices to create the Meridian motor home of your dreams.

 SMARTSPACE

FEELS LIKE HOME.*

Enjoy a relaxing evening at the movies in the comfort of your Meridian. The entertainment center boasts a 24" flat-face TV, DVD/VCR combo and a Home Theater Sound System. Further enhancements include an amplified antenna, video selection system and a 600-watt inverter that lets you enjoy TV or movies without shoreline or generator power. A 2,000-watt inverter/charger is also available.

Stitchcraft custom furniture provides a number of seating options. Depending on your floorplan, they may include the Rest Easy® lounge, plush Euro chair with ottoman, banquette and/or a hoop-base lounge chair. All are available in UltraLeather HP™ for an added touch of luxury.

Day/night pleated shades provide multiple levels of light and privacy. They cover the dual-glazed, thermo-insulated windows, which are flush-mounted for added style and thermal efficiency.



365 MANHATTAN WITH SIERRA MAPLE

SATELLITE TV An available King-Dome® in-motion satellite system eliminates manual dish adjustments, allowing passengers to watch their favorite channels while you drive.*

*Satellite TV requires a subscription. See your dealer for details.



Rest Easy® This multi-position lounge changes from a sofa to a recliner with ottoman to a comfortable bed, all at the touch of a button.



BenchMark This innovative dinette offers inner-spring cushions, large storage bins and converts into a comfortable bed.



BANQUETTE The 34H and 36G offer this cozy seat for two in fabric or UltraLeather HP™.

39K CABOT COVE WITH WASHED MAPLE



MAKE ROOM.

The bedroom slideout creates plenty of room for a walk-around queen bed. It also provides plenty of room for storage, such as the mirrored wardrobe and underbed compartment (NA 39K). If you like to watch TV before turning in for the night, the Meridian provides a 20" flat-face TV in the 32T and 34H or a 20" LCD TV in the 32T and 34H. For added convenience, the TV is wired to the front video components, which can be controlled using the bedroom remote. In the bathroom, a skylight above the shower lends a spacious feel while highlighting upscale features like the residential-height toilet and Moen® chrome faucet. The shower features a Moen Posi-Temp® valve that maintains a consistent shower temperature even if water pressure fluctuates. An available shower package provides a fold-down shower seat and a handheld shower-head. Extra storage can be found in the linen closet and the hamper on the 32T and 34H.



WASHER/DRYER

Select the available washer/dryer and enjoy the convenience of not needing to stop at the laundromat (NA 32T).



THE SLEEP NUMBER

select comfort



SLEEP NUMBER® BED
The available Sleep Number Vantage Point bed by Select Comfort™ lets you adjust the firmness of each side of the bed independently to your Sleep Number® – the Key to a Perfect Night's Sleep.™

LOOK WHAT'S COOKING.

Prepare even the most extravagant meals in this full-featured galley. The standard stainless steel appliances not only look great, they offer advanced features like sensor cook on the 30" microwave. Solid-surface countertops and sink covers create a workspace large enough for everything on your menu.

Our SmartSpace design philosophy adds value to the galley with features like full-extension drawer slides, a pullout pantry and other unique storage ideas. Dining options include a classic dining table and chairs (NA 32T) or the BenchMark™ full comfort dinette with innerspring cushions for extra support. A multifunction dining table is also offered, providing seating for up to four people and doubling as a computer desk (NA 32T).

39K CABOT COVE WITH WASHED MAPLE



39K GALLEY STORAGE

REFRIGERATOR

Upgrade to the four-door refrigerator/freezer for extra cold storage.

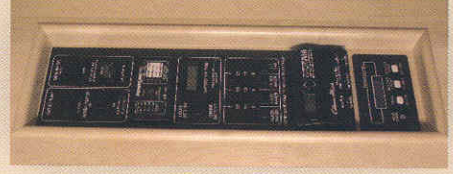


ONEPLACE®

This systems center, located near the galley, houses frequently checked gauges, switches and controls.



DRAWER SLIDES Drawers open all the way on full-extension drawer slides for easy access.



GET MOVING.

The Meridian gives you full command with touchpad transmission control and a steering wheel that tilts and telescopes into perfect position. Choose the Sony® rearview monitor for added peace of mind when backing and maneuvering.

The comfortable cab seats recline and feature adjustable armrests. They are available in Ultraleather HP™ and can be upgraded with six-way power pedestals and a passenger-seat footrest.

While you drive, listen to CDs, local radio or weather band updates on the Sirius® Satellite-ready RV Radio.® It features a large, easy-to-read display, simplified controls and includes a steering wheel remote so you can adjust the radio while keeping your eyes on the road. A handheld remote lets you conveniently use the RV Radio when parked. You can expand your listening options by adding the Sirius Satellite* radio package with over 120 digital channels. A complimentary six-month subscription is provided with this package.

*Sirius Satellite radio not available in Canada.



VIDEO SYSTEM For extra visibility, add the side video camera system. It activates with the turn signal allowing the driver to view both sides of the coach through the rearview monitor during turns.



TRIPTEK™ An available onboard computer calculates and displays trip information on the rearview monitor.



KEYONE™ Allows you to open the entrance door, storage compartments and dual fuel fill doors with a single key. For added convenience, unlock the doors with the keyless remote.



EURO CHAIR
Relax in this stylish leather recliner (NA 32T and 39K).



HOOP-BASE CHAIR
You can move the hoop-base chair to your favorite spot when the coach is parked. (NA 39K).



MULTIFUNCTION TABLE Expands to accommodate four chairs and doubles as a computer desk and a dining table (NA 32T).



DINING TABLE Provides elegant dining for two and expands to seat four people (NA 32T).

GET HOOKED UP.

The service center makes hookups a snap with color-coded labels. The heated compartments are full of well-planned features like the QuickConnect® coupling valve and the QuickPort® service connection hatch.

QuickPort eliminates the hassle of feeding hoses through a tiny access hole, while still allowing bay doors to close even when connected to hookups.

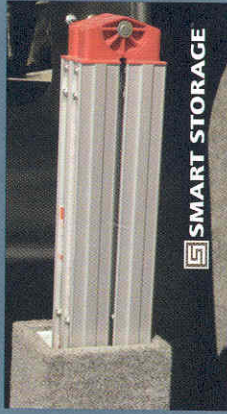
The QuickConnect coupling valve includes an easy-to-operate valve for quick and easy hookups. For added convenience it even has its own storage holster. A wash station lets you clean up before dragging dirt into the coach.

A number of Smart Storage™ exterior features were included to let you haul more gear. These include the StoreMore® slideout system and custom-designed compartments for important accessories. You'll find a portable satellite dish hookup in the service center.



STORE MORE

The StoreMore slideout system allows exterior storage compartments to move with the slideout for easy access to your gear.



SMART STORAGE

LADDER This folding ladder tucks into a customized enclosure so it's always close at hand (NA 32T).



STORAGE PULLOUT TRAY Provides quick access to stored items (NA 39K).



EXTERIOR ENTERTAINMENT CENTER Includes AM/FM stereo, CD player, speakers, 12-volt powerpoint, 110-volt outlet and a TV jack.



QuickPort

SERVICE CENTER The QuickConnect coupling valve makes for quick, clean and easy connections to the waste dump. QuickConnect and the QuickPort service connection hatch are part of the improved service center.

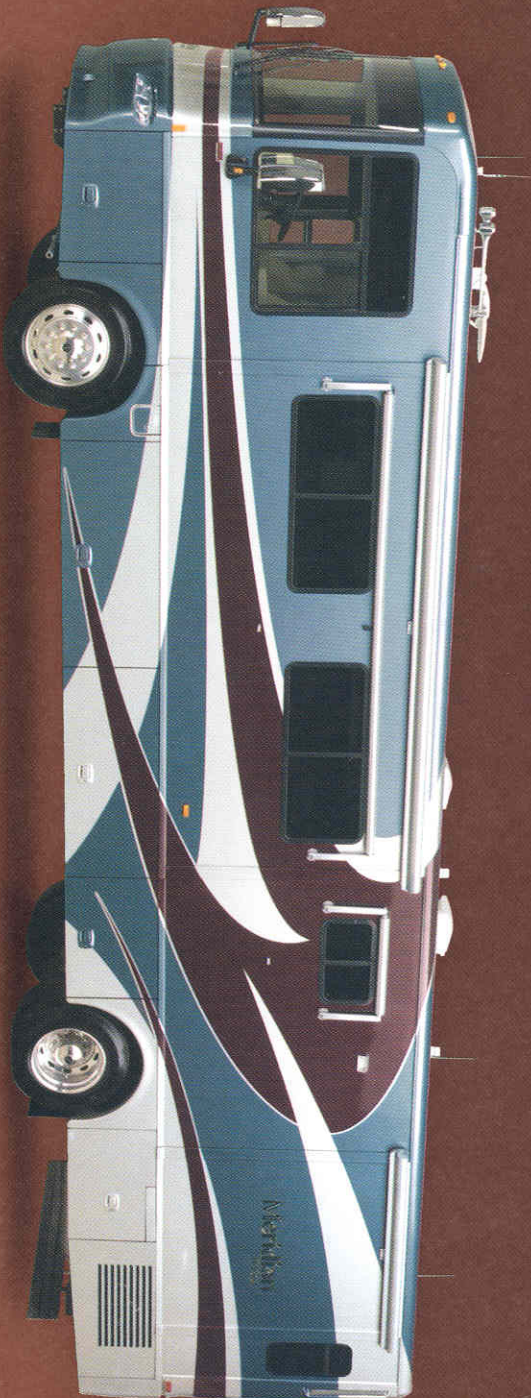


QuickCONNECT

BETTER BY DESIGN.

Our engineering and design teams had you in mind when selecting features for this year's coach. These include auxiliary backup lamps that project from the rear bumper for easier backing and maneuvering at night.

The available automatic hydraulic leveling jacks make leveling your Meridian as easy as pushing a button. The exterior mirrors incorporate a breakaway design that protects them from impact and provides for extra clearance when storing your coach.



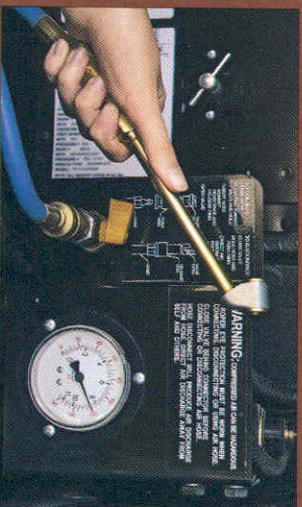
FULL-BODY PAINT Meridian features our covered full-body paint, stylized aluminum wheels and an available Icasca mud guard.



POWERLINE® This energy management system monitors electrical usage and automatically cycles appliances on and off to prevent power shortages.

TWO-WAY RADIOS

Keep in touch around the campground. An available set of four two-way radios comes in a built-in charging station.



AUXILIARY AIR SUPPLY
The 50 ft. air hose is perfect for inflating tires and toys.



TRUEAIR The Trueair residential central air conditioning system utilizes an advanced Coleman®-Mach® cooling unit for exceptional climate control. It's 10% quieter and cools 40% faster than bulky roof units, while its basement location provides a low vehicle profile and reduces interior noise. On cool days the heat pump provides warmth without needing the furnace.



CHASSIS BATTERY DISCONNECT SWITCH
Conveniently located in the engine compartment, the battery disconnect switch prevents auxiliary battery drain when storing your Meridian.



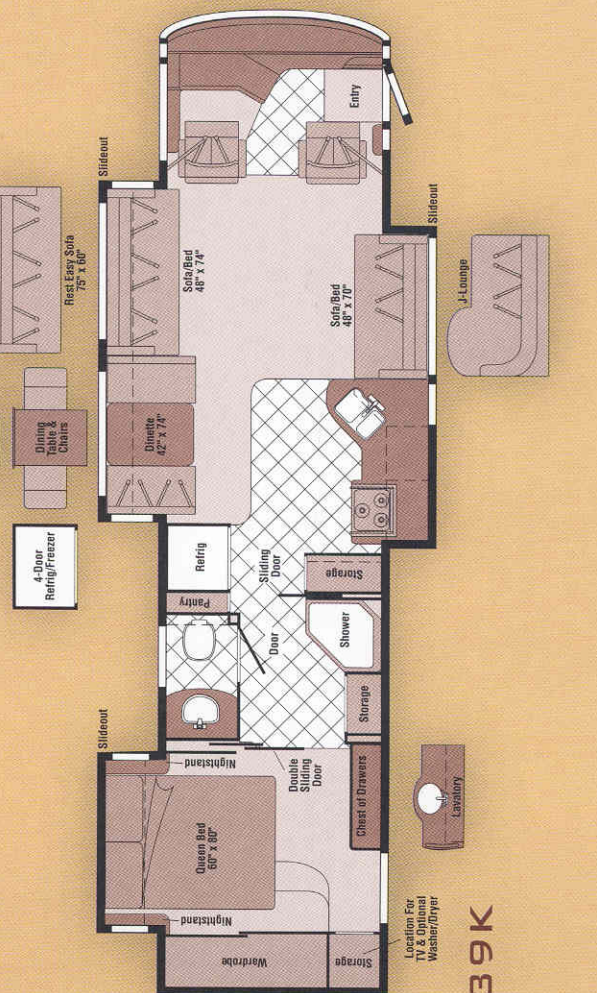
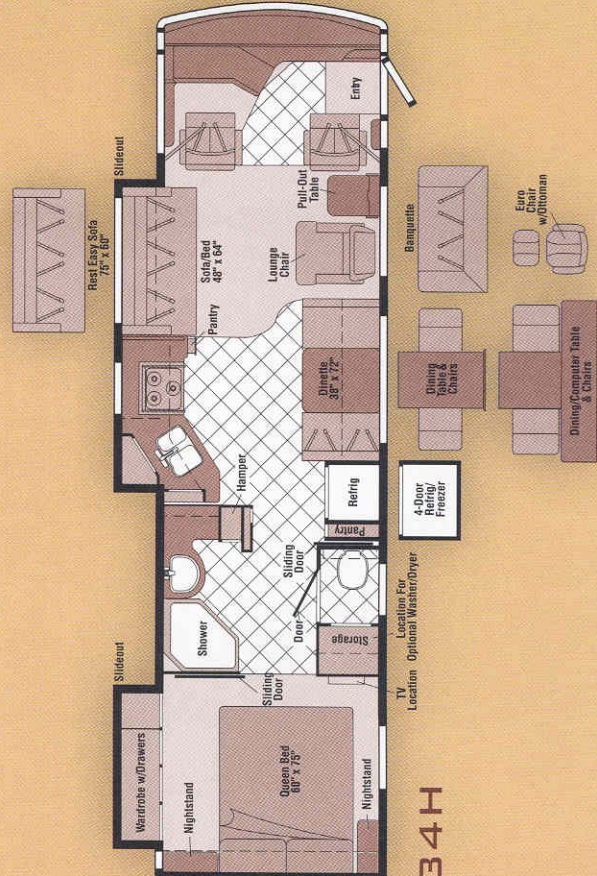
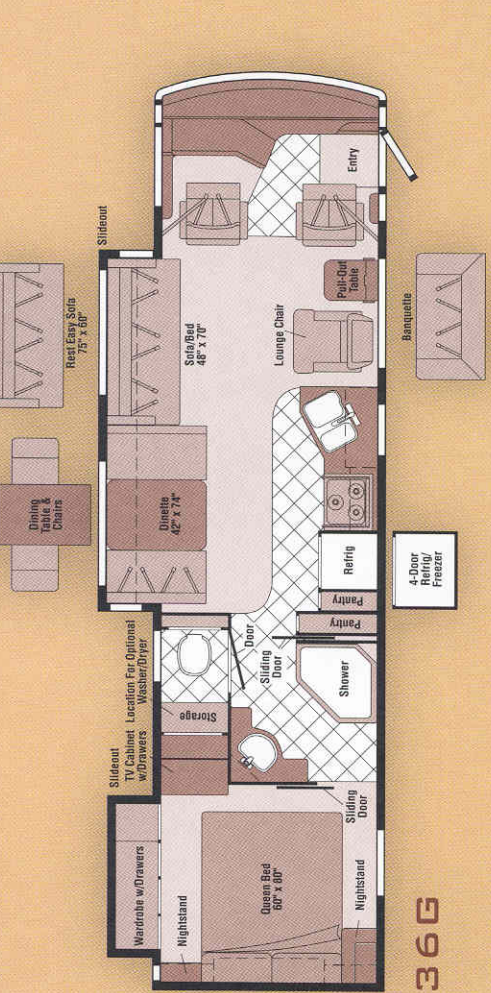
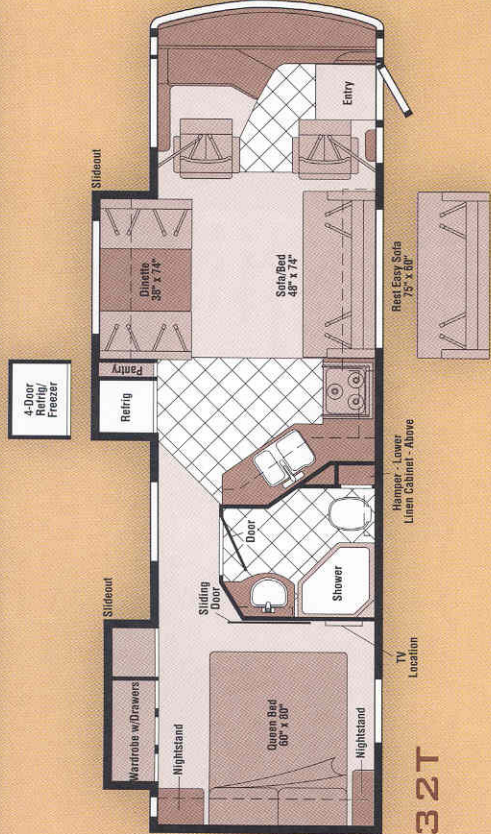
TRUELEVEL Eliminate the guess work with our exclusive Truelevel™ holding tank monitoring system. It incorporates Mirrus™ * detector cells that detect liquid levels from outside the tank. No probes mean no more corrosion or clogging, just accurate readings time after time.

*Mirrus is a trademark of Material Sciences Corporation.

06 FLOORPLANS



Note: Dimensions shown are for sleeping space only and may vary due to styling differences. Dashed lines denote overhead storage areas.



065 SPECIFICATIONS

| WEIGHTS & MEASURES | | 32T | 34H | 36G | 39K |
|--|--|--------|--------|--------|--------|
| Length | | 32'8" | 34'11" | 36'8" | 39'5" |
| Exterior Height ¹ | | 11'7" | 11'7" | 11'8" | 11'7" |
| Exterior Width ² | | 8'5.5" | 8'5.5" | 8'5.5" | 8'5.5" |
| Exterior Storage ³ (cu. ft.) | | 81.3 | 89.6 | 121.9 | 98.7 |
| Interior Height | | 6'8" | 6'8" | 6'8" | 6'8" |
| Interior Width | | 8'0.5" | 8'0.5" | 8'0.5" | 8'0.5" |
| Freshwater Capacity w/Heater ⁴ (gal.) | | 92 | 92 | 92 | 92 |
| Holding Tank Capacity ⁵ - Black/Gray (gal.) | | 62/52 | 62/54 | 54/54 | 54/54 |
| LP Capacity ⁶ (gal.) | | 31 | 31 | 31 | 31 |
| Fuel Capacity (gal.) | | 90 | 90 | 90 | 90 |
| GVWR ⁷ (lbs.) | | 37,910 | 37,910 | 37,910 | 39,410 |
| GVWR (lbs.) | | 27,910 | 27,910 | 27,910 | 29,410 |
| GAWR - Front (lbs.) | | 10,410 | 10,410 | 10,410 | 10,410 |
| GAWR - Rear (lbs.) | | 17,500 | 17,500 | 17,500 | 19,000 |
| Wheelbase | | 190" | 208" | 228" | 262" |

| AUTOMOTIVE/CHASSIS | | 32T | 34H | 36G | 39K |
|---|--|-----|-----|-----|-----|
| Chassis - Freightliner® Caterpillar® 7.2L turbo-charged diesel, 350-hp, rear radiator, Allison® 6-speed electronic 3000 MH transmission, NavRay® front & rear air suspension, 160-amp, alternator, exhaust brake, 4-wheel ABS, SmartWheel™ steering wheel, Wheels stylized aluminum | | \$ | \$ | \$ | \$ |
| Chassis - Freightliner, Cummins® ISB 5.9L turbo-charged diesel, 300-hp, rear radiator, Allison 6-speed electronic 3000 MH transmission, NavRay front & rear air suspension, 160-amp, alternator, exhaust brake, 4-wheel ABS, SmartWheel steering wheel, Wheels stylized aluminum | | \$ | \$ | \$ | \$ |
| Air Accessory Manifold quick connect, 50" air hose, pressure gauge, manual air shutoff, Battery Disconnect chassis, manual, Leveling Jacks HWH® hydraulic manual control, Tire Tools wrench & leverage bar, Trailer Hitch ⁸ 10,000-lbs. drawbar/500 lbs. maximum vertical tongue weight & 7-pin wiring | | \$ | \$ | \$ | \$ |
| Leveling Jacks HWH hydraulic, automatic | | 0 | 0 | 0 | 0 |
| CAB AREA & CONVENIENCES | | 32T | 34H | 36G | 39K |
| Cab Seats (fabric) armrests, lumbar support, multiaid, slide/recline & swivel, Compass electronic w/outdoor thermometer, Console Center Cabinet, Cruise Control, Defroster Fans aux. 2-speed w/instrument panel switch, Exhaust Brake Switch, Floor Mat (driver) carpet, Map Lights, Power Door Locks w/keyless entry, Powerpoint 12-volt DC, Shades light-filling, cab windows, Steering Wheel tilt & telescope w/power-assist, SmartWheel, Sunroofs, Window (driver) full slider w/ screen, dual-gazed/thermo-insulated, Window (passenger) partial slider w/screen, dual-gazed/thermo-insulated, Windshield Wipers intermittent, pantograph arms | | 0 | 0 | 0 | 0 |
| Cab Seat 6-way power-assist (driver), Cab Seats 6-way power-assist (driver & passenger avail. w/footrest), Cab Seats (Ultralather HP™), Cab Seat passenger seat w/footrest, GPS Navigation System, Monitor System rearview b/w w/singie camera & one-way audio, Audiovox® Sunroofs powered, Trip Computer TripTik™, Video Camera System side-mounted cameras | | 0 | 0 | 0 | 0 |

| COUNTERTOPS | | 32T | 34H | 36G | 39K |
|---|--|-----|-----|-----|-----|
| Soild-Surface galley & bath | | \$ | \$ | \$ | \$ |
| FLOORCOVERING | | 32T | 34H | 36G | 39K |
| Carpeting w/rod, Vinyl Tile galley, bath, cab | | \$ | \$ | \$ | \$ |
| FURNITURE | | 32T | 34H | 36G | 39K |
| BenchMark™ (fabric) full comfort dinette w/access to storage below, child seat, leather anchor | | \$ | \$ | \$ | \$ |
| Banquette (fabric) w/throw pillows, access to storage below | | 0 | 0 | 0 | 0 |
| Banquette (ultralather HP) w/throw pillows, access to storage below | | 0 | 0 | 0 | 0 |
| Chair Lounge (fabric) hoop-base, cabinet w/table, recline/rocker/swivel/slide, footrest | | \$ | \$ | \$ | \$ |
| Chair Lounge (ultralather HP) hoop-base, cabinet w/table, recline/rocker/swivel/slide, footrest | | 0 | 0 | 0 | 0 |
| Chair Lounge (ultralather HP) Euro recliner w/ottoman, cabinet, Flexsteel® | | 0 | 0 | 0 | 0 |
| Dining Table & Chairs (2) freestanding, (2) folding, extendable table | | 0 | 0 | 0 | 0 |
| Dining/Computer Table & Chairs (2) freestanding, (2) folding, legless table | | 0 | 0 | 0 | 0 |
| J-Lounge (fabric) access to storage below, throw pillows | | 0 | 0 | 0 | 0 |
| J-Lounge (ultralather HP) access to storage below, throw pillows | | 0 | 0 | 0 | 0 |
| Rest Easy® (75" x 60") fabric) multi-position lounge, throw pillows & fold-down armrest w/leverage holder | | 0 | 0 | 0 | 0 |
| Rest Easy (75" x 70") fabric or Ultralather HP, multi-position lounge, throw pillows, dual trundles, fold-down armrest w/leverage holder | | 0 | 0 | 0 | 0 |
| Rest Easy (75" x 60") fabric) multi-position lounge w/dual recliners, dual trundles, Rest Easy (75" x 60") Ultralather HP multi-position lounge, Rest Easy (75" x 60") Ultralather HP multi-position lounge w/dual recliners, dual trundles | | 0 | 0 | 0 | 0 |
| Sofa (48 x 64") fabric) footrests, access to storage below, throw pillows | | \$ | \$ | \$ | \$ |
| Sofa (48 x 70") fabric) footrests, access to storage below, throw pillows | | \$ | \$ | \$ | \$ |
| Sofa (48 x 74") fabric) footrests, throw pillows | | \$ | \$ | \$ | \$ |

| ENTERTAINMENT | | 32T | 34H | 36G | 39K |
|---|--|-----|-----|-----|-----|
| CB Prep includes antenna, antenna lead, 12-volt DC Powerpoint, Entertainment Center (exterior) w/CD player, DC receptacle, AC duplex receptacle, AM/FM radio w/remote, TV jack, radio antenna, speakers, lockable compartment, Home Theater Sound System amplifier, DVD/VCR combo, receiver, speakers (5), subwoofer, Sony® RV Radio® (cab), AM/FM/Stereo/CD weather band, remotes, roof-mounted flexible rubber antenna, speakers (4), Sirius® Satellite ready, Radio Power Switch main/aux, battery, Satellite System Ready, Telephone Input interior jacks, TV 24" Color AC flat-face w/remote, front, TV 20" Color AC flat-face (LCD flat-face on 32T, 34H), stereo w/remote, remote extenders, rear, TV Enhancement Package antenna (amplified), interior jack(s), coax wiring, cable input, exterior jack, reminder light, Video Selection System | | \$ | \$ | \$ | \$ |
| CB Cobra® Compact Multidisc Changer w/remote, Radios (4) 2-way, Satellite Dish Antenna RV digital, manual, elevation sensing unit, Satellite Dish Antenna RV digital, automatic, Satellite Radio Sirius, includes a six-month, prepaid subscription (NA in Canada), Satellite System RV digital, in-motion, King-Dome® Stereo System rear, AM/FM/CD player, alarm clock | | 0 | 0 | 0 | 0 |
| INTERIOR | | 32T | 34H | 36G | 39K |
| Ceiling vinyl, Shade front wraparound, pleated w/vents, Lights ceiling w/wall switches, incandescent, bath, bedroom, Light decorative dinette, Lights fluorescent, recessed, galley, dinette, lounge, bath hallway, wall switches, Lights reading, aux., Mini Blinds galley & bath area, Shades pleated, day/night w/blackout, lounge, dinette, & bedroom areas, Shade Package roof vents, Sliding Stappell Cover Panel powered, Windows dual-gazed/thermo-insulated, flush-mounted | | \$ | \$ | \$ | \$ |
| Interior Pictures (2) framed | | \$ | \$ | \$ | \$ |
| CABINETRY | | 32T | 34H | 36G | 39K |
| Portsmouth Oak or Concert Cherry or Washed Maple or Sierra Maple stile-and-rail construction w/etched, raised-panel inserts on cabinet doors | | 0 | 0 | 0 | 0 |

| GALLEY | | 32T | 34H | 36G | 39K |
|---|--|-----|-----|-----|-----|
| Faucet single-control w/pullout sprayer, Moen® Galley Cabinet, Light fluorescent, under cabinet, Microwave/Convection Oven w/winter range fan, sensor cook, residential 30", stainless steel, Sharp® Mirror, Pantry, Range Cover, Range Top 3-burner w/storage below, recessed, sealed burners, stainless steel, Amana® Refrigerator/Freezer large double-door, stainless steel, Norcold® Roof Vent powered ventilator fan, insulated, Silverware Tray, Sink double, molded w/sink covers (countertop material), Wastepaper Basket, Water Purification System Everpure® | | \$ | \$ | \$ | \$ |
| Appliance Storage Cabinet, Spice Rack | | \$ | \$ | \$ | \$ |
| Countertop Extension flip-up | | \$ | \$ | \$ | \$ |
| Cutting Board slideout | | \$ | \$ | \$ | \$ |
| Island/Storage Cabinet | | 0 | 0 | 0 | 0 |
| Range 3-burner w/large oven, glass door w/storage below, recessed, sealed burners, stainless steel, Amana, Refrigerator/Freezer large double-door w/panemaker, stainless steel, Norcold, Refrigerator/Freezer 4-door w/panemaker, stainless steel, Norcold | | 0 | 0 | 0 | 0 |
| Utility Tray tip-out | | \$ | \$ | \$ | \$ |



| BATH | 32T | 34H | 36G | 39K |
|--|-----|-----|-----|-----|
| Cabinet lavatory, Cabinet linen, Faucet (lavatory) single-control, Moen, Faucet (shower) single-control w/fixed showerhead w/Moen Posi-Temp® Light shower, Lights makeup, Roof Vent powered ventilator fan, insulated, wall switch, private toilet room, Shower w/wall surround, Shower Door textured glass, Sink oval, Skylight , Toilet porcelain w/foot-pedal, flush | S | S | S | S |
| Shower Package fold-down shower seat, handheld showerhead w/water shut-off valve | 0 | 0 | 0 | 0 |
| Chair Rail | S | S | S | S |
| Hamper tip-out | S | S | S | S |
| Medicine Cabinet | S | S | S | S |
| Mirror(s) | S | S | S | S |
| BEDROOM | 32T | 34H | 36G | 39K |
| Bed queen, Serta® innerspring w/underbed storage (MA 39K), bedspread, pillows, throw pillow, headboard, Lights decorative wall lamps, Lights reading, Mirror , Nightstand(s) , Powerpoint , 12-volt DC receptacle, Wainscoting w/chair rail, Wardrobe Cabinet cedar lined, carpeted floor, clothes rod, drawers, light, mirrored door | S | S | S | S |
| Sleep Number ® queen-size mattress by Select Comfort® | 0 | 0 | 0 | 0 |
| Chest of Drawers | 0 | 0 | 0 | 0 |
| Fan ceiling | 0 | 0 | 0 | 0 |
| Lavatory faucet, sink (oval), mirror, decorative wall lamps | 0 | 0 | 0 | 0 |
| EXTERIOR | 32T | 34H | 36G | 39K |
| Awning Rails w/rain gutters, Awning Package electric, entry & patio w/wind sensor & remote, Door entrance w/separate movable screen door, deadbolt lock, keyless entry, Entrance Door Step single electric w/doorjamb switch, Exterior Full-Body Paint Slate, Chestnut or Maple, Ladder , Lamps aux. backup, docking, Lights fog lamps, Light porch, Light under hood, Light service, driver side, Locking Fuel-Fill Door , Mirrors chrome, electric remote w/defrost, turn signal, Mudflaps (2) rear, Receptacle AC duplex, Sidewall Skin one-piece smooth fiberglass, high-gloss, Storage Compartments smooth valance panels, trunk liner, gas cylinders, Trimark® KeyOne™ System, paddle latch, lights | S | S | S | S |
| Air Horns roof-mounted, Awning Sunscreen patio (requires electric awning package), Awning windows w/full-body paint only, Front Exterior Protective Mask w/full-body paint only, Mud Guard full-width, rear, Undercoating | 0 | 0 | 0 | 0 |
| Compartment Tray(s) slideout | 0 | 0 | 0 | 0 |
| Ladder folding, step, StoreMore® storage compartment | 0 | 0 | 0 | 0 |

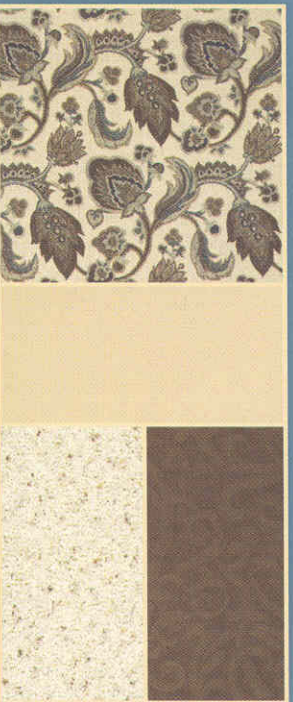
| SYSTEMS | 32T | 34H | 36G | 39K |
|--|-----|-----|-----|-----|
| Automatic Heater/A/C , Aux. Start Circuit , Batteries (2) (coach) deep-cycle, Battery (coach) disconnect system, Battery Charge Control automatic dual, Drain 1½" water tank, Electrical Distribution System AC & DC breaker panels, Electrical System Display Center , Generator 7,500-watt, Onan® QuietDiesel™ Generator/Shoreline Automatic Changeover Switch , Inverter DC/AC, 600-watt, OnePlace ® systems center, wall-mounted, courtesy light, battery digital voltmeter, PowerLine ® energy management display, generator hourmeter gauge, generator start/stop switch, heating & A/C thermostat, holding tank levels, LP tank level, solar panel/battery charger light, water heater switch, water heater on light & pilot indicator light, water pump switch, water tank level, Power Cord 50-amp., PowerLine energy management system, Service Center (drainage) drainage valves, holding tank flushing system, 10' sewer hose w/QuickConnect® coupling valve, QuickPort® service connection hatch, Service Center (electrical/water) cable input, city water diverter fill, drain for freshwater system, exterior wash station w/pump switch, paper towel holder, power cord, QuickPort service connection hatch, shoreline/generator automatic changeover switch, telephone input, portable satellite hook-up, Solar Panel 10-watt battery charger, Tank flushing system, black tank only, Tank holding, heated compartment, Tank LP , permanent mount w/gauge, TrueAir ® residential central A/C w/heat pump, TrueLevel ™ holding tank monitoring system, Water Heater 10-gal. electronic ignition, LP gas/120V w/motorola, Water Hookup city, Water Pump demand, variable speed, switches, Water Tank Fill pressurized city hook-up w/diverter valve, Water Tank Fill w/locking door compartment, Water System Winterization Package water heater bypass valve & siphon tube Furnace 35,000 BTU | \$ | \$ | \$ | \$ |
| Furnace 40,000 BTU, Washer/Dryer Prep | \$ | \$ | \$ | \$ |
| Inverter/Charger DC/AC, 2,000-watt w/remote panel | 0 | 0 | 0 | 0 |
| Washer/Dryer Combination | 0 | 0 | 0 | 0 |
| SLIDEOUTS | 32T | 34H | 36G | 39K |
| Slideout Room bed w/slideout cover | \$ | \$ | \$ | \$ |
| Slideout Room lounge/galley w/slideout cover, StoreMore® | \$ | \$ | \$ | \$ |
| Slideout Room sofa/dinette w/slideout cover, StoreMore | \$ | \$ | \$ | \$ |
| Slideout Room sofa/galley w/slideout cover, StoreMore | \$ | \$ | \$ | \$ |
| Slideout Room refrigerator/dinette w/slideout cover, StoreMore | \$ | \$ | \$ | \$ |
| Slideout Room wardrobe w/slideout cover | \$ | \$ | \$ | \$ |
| Assist Bars interior, Assist Handle exterior, acrylic w/logo, Bumpers front & rear, Child Seat Tether Anchor , Detectors/Alarms LP leak, smoke, carbon monoxide, Fire Extinguisher 10 BC, Ground Fault Interrupter , Light high-mount brakelamp, Lights courtesy w/wall switches, Seat Belts cab, 3-point, Seat Belts lap (in selected areas), Window escape, Windshield laminated safety glass Lights daytime running | \$ | \$ | \$ | \$ |
| WARRANTY | 32T | 34H | 36G | 39K |
| 12-month/15,000-mile basic limited warranty ; ⁶ 36-month/36,000-mile warranty on structure ; ⁷ 10-year limited parts & labor warranty on roof skin ⁸ | \$ | \$ | \$ | \$ |

- The height of each model is measured to the top of the tallest standard feature and is based on the curb weight of a typically equipped unit. The actual height of your vehicle may vary by several inches depending on chassis or equipment variations. Please contact your dealer for further information.
 - Meridian floorplans feature a wide-body design - over 96" in making your purchase decision, you should be aware that some states restrict access on some or all state roads to 96" in body width. Before making your purchase decision, you should confirm the road usage laws in the states of interest to you.
 - The load capacity of your motor home is designated by weight, not by volume, so you cannot necessarily use all available space when loading your motor home. Capacities are based on measurements prior to tank installation. Slight capacity variations can result due to installation applications.
 - Capacities shown are tank manufacturer's listed water capacity (W.C.). Actual filled LP capacity is 80% of listing due to overfilling prevention device on tank.
 - Actual towing capacity is dependent on your particular loading and towing circumstances which includes the GWR, GAWR, and GOWR as well as adequate trailer brakes. Please refer to the Operator's Manual of your vehicle for further towing information.
 - See separate chassis warranty details provided in Owner's Manual.
 - See your dealer for complete warranty information.
 - Not Available
 - Standard
 - Optional
- Not all items available in combination. See dealer for details.
Winnebago Industries® continuing program of product improvement makes specifications, equipment, model availability, and prices subject to change without notice. Comparisons to other motor homes are based on the most recent information available.

INTERIOR DECOR

Choose from three fabric selections and four wood choices.

| | | |
|------|---------|-----------|
| SOFA | LEATHER | BEDSPREAD |
| | | CARPET |



Cabot Cove w/available Buff UltraLeather HP™



Manhattan w/available Buff UltraLeather HP™



Deep Linen w/available Papyrus UltraLeather HP™



Portsmouth
Oak



Concert
Cherry



Washed
Maple



Sierra
Maple



Built by Winnebago Industries. Built to last.

Itasca motor homes are built by Winnebago Industries, the company that defined motor homes. The company that built its reputation on quality construction. The company that transformed the motor home concept into a way of life.

Today, Winnebago Industries brings that reputation for quality and its 47-year history of motor home innovation to the design and construction of every motor home. It's all a part of SuperStructure,® our exclusive system of proprietary structural components that instills each motor home with improved strength and durability.

SOLID FOUNDATION Steel and aluminum truss work provides a solid, flat foundation for floors and sidewalls. Winnebago Industries engineers also take special care to distribute the weight of components to ensure proper handling and stability.



**SUPER
STRUCTURE**

INTERLOCKING JOINTS The floors, sidewalls and roof are all integrally connected using interlocking joints. This creates a coach body that acts as a cohesive unit for improved strength and durability.



E-COATING Winnebago Industries employs an exclusive 12-stage automotive-style dip tank process to apply an advanced electrodeposition coating on critical steel components for unmatched corrosion protection.

THERMO-PANEL® SIDEWALLS Invented by Winnebago Industries, Thermo-Panel construction combines a fiberglass panel, high-density, block-foam insulation and aluminum support structures to create some of the most durable, lightweight sidewalls in the industry.

FIBERGLASS ROOF Every Itasca motor home features a one-piece fiberglass roof backed by a 10-year limited parts-and-labor roof skin warranty.

ATTENTION TO DETAIL Whether it's sending every coach through a high-pressure water tunnel to check for leaks or labeling each individual wire and barcoding parts to save time and frustration during service, Winnebago Industries considers every detail to ensure your Itasca motor home provides you with years of pleasure.

STRONG AS STEEL Appliances are secured directly to embedded steel plates for added safety. Windshields are also mounted in steel with an automotive-style sealant; lesser designs use a rubber gasket to mount the windshield in fiberglass.



1-year-old Itasca fiberglass roof



1-year-old competitor's rubber roof

BUILT TO A HIGHER STANDARD The Meridian features a crowned, one-piece fiberglass roof, backed with a 10-year limited parts-and-labor roof skin warranty. Fiberglass offers superior strength, attractiveness and durability over the rubber roofs found on many competitive models which can chalk, streak and degrade over time. Fiberglass also provides increased puncture and tear resistance.



TAKE A TOUR We're proud of our process, state-of-the-art facilities and the people who make Winnebago Industries number one. We invite you to visit our factory in Forest City, Iowa, for a first-hand look at the dedication and technology behind every motor home we build.



RECOGNIZED QUALITY The Recreation Vehicle Dealer Association annually rates RV manufacturers and awards the Quality Circle award to manufacturers who provide exceptional products, service and support. Winnebago Industries is proud to be the only manufacturer to receive this award every year since its inception.



COMMITTED TO SERVICE We back our motor homes with the industry's best service after the sale.

- 12-month/15,000-mile basic limited warranty
- 36-month/36,000-mile warranty on structure
- Standard 10-year limited parts-and-labor roof skin warranty
- Complimentary 24-hour roadside assistance program
- Tripsaver Fast Track Parts. Tripsaver guarantees that in-stock warranty parts ship directly to your dealer within 24 hours.
- National dealer service network



WIT CLUB Itasca owners are like family. Joining the Winnebago-Itasca Travelers is a great way to meet and travel with other Itasca enthusiasts. Members enjoy:

- Caravans and rallies
- Local and state group activities
- RV travel benefits



For Sales and Service Information Contact:



Built proudly by



NYSE listing: WGO

©2005 Winnebago Industries, Inc.

Printed in USA

Seat belts are your most important hookup. Always buckle up.