

2012 Winnebago Itasca Sunstar 30T

<http://www.DreamFindersRV.com/RV/7708340/details.htm>



FOREST CITY, IOWA USA

THIS LABEL IS NOT REQUIRED BY LAW, HOWEVER, WINNEBAGO INDUSTRIES INC. AND HAROLD'S RV CENTER, INC. BELIEVE YOU HAVE A RIGHT TO BE INFORMED OF FAIR PRICING LEVELS TO HELP YOU READILY COMPARE THE RELATIVE VALUE OF RECREATIONAL VEHICLES YOU MAY BE CONSIDERING

VEHICLE DESCRIPTION	DIMENSIONS	CAPACITIES
MAKE: ITASCA SUNSTAR	EXTERIOR LENGTH: 30'11"	FUEL: 80 GAL FRESHWATER: 84 GAL
MODEL: 2012 IFE30T	EXTERIOR WIDTH: 8'5.5"	HOLDING TANK - BLACK: 41 GAL
SERIAL NUMBER: 70E42N244165	EXTERIOR HEIGHT: 12'2"	HOLDING TANK - GRAY: 42 GAL
CHASSIS VIN: 1F65F5DY6C0A00111		LPG (FILLABLE TO 80%): 18 GAL
	<small>Note: Exterior height of vehicle is measured to the highest standard feature on the roof and will vary due to chassis variance, option selection, fluids, and other loading factors.</small>	<small>Note: Capacities are estimates based on calculations and represent approximate numbers. Capacities may vary based on fabrication and installation of tanks and compartments.</small>

OPTIONS INSTALLED BY MANUFACTURER	RETAIL
C68 MEDALLION/GRY/GLA VIENNA MAP	413
086 INTERIOR UPGRADE PACKAGE	826
BACKSPASH - GALLEY	
DREAM DINETTE TABLE MECHANISM	
FLIP-UP COPUNTERTOP EXTENSION	
PADDED VINYL CEILING	
RANGE COVER	
REFRIGERATOR DOOR INSERT UPGRADE	
SINK COVERS	
THROW PILLOWS - SOFA & BED	
091 CAB SEATS-ULTRALEATHER	350
1JU TV (REAR)-19"COLOR, STEREO	329
13G RANGE 3 BURNER WITH OVEN	154
255 RADIO/AM/FM/CD/DVD PLAYER	175
26F PAINT & GRAPHICS	2,989
AUTUMNWOOD	
28X MIRRORS-EXTERIOR W/DEFROST	175
35Q LADDER-EXTERIOR	154
36N FANS-DEFROSTER, AUXILIARY	119
41M VENT-POWER VENTILATOR	98
52N AWNING - PATIO, ELECTRIC	945
53D WTR HTR-6GAL/ELE/LP/MOTOR AID	266
60M HYDRAULIC LEVEL JACKS-AUTO	2,835
64Q SEAT PED-6-WAY POWER DRIVER	336
64R EXTERIOR WASH STATION	91
74C VIDEO CAMERA SYSTEM	406
74J REARVIEW MONITOR SYS W/AUDIO	630
77Y WINDOW COVERING-EXCHANGE	350
MCD AMERICAN DUO ROLL SHADES	
99D COMPETITIVE EDGE	4,200-

Base Price \$ 110,707.00

Dealer prep 850.00

Total price \$ 111,557.00

MANUFACTURER'S SUGGESTED BASE PRICE	\$ 102,176
TOTAL OPTIONS	\$ 7,441
DELIVERY & HANDLING CHARGE	1,090
TOTAL BASE, OPTIONS, & DELIVERY CHARGE	\$ 110,707

Manufacturer's suggested retail price does not include state and local taxes, dealer prep and / or options installed by the dealer. Winnebago Industries, Inc. reserves the right to change prices and specifications without notice.



MOTOR HOME COMPONENT INFORMATION

SERIES NAME ITASCA SUNSTAR

SERIAL NO. 70E42N244165

MODEL 2012 30T

CHASSIS VIN 1F65F5DY6C0A00111

<u>COMPONENT</u>	<u>MANUFACTURER</u>	<u>MODEL</u>	<u>SERIAL NUMBER</u>
IGNITION KEY	FORD		1262X
DEAD BOLT KEY	TRIMARK		2233
MAIN DOOR KEY	TRIMARK		3045
COMPARTMENT DR LOCK	TRIMARK		3045
COMPARTMENT DR LOCK	STRATTEC		0005
RADIO	JENSEN		N1210N023425
GENERATOR	ONAN	AWM970	H110234360
FURNACE	SUBURBAN	KY-FA/26100	112902941
WATER HEATER	ATWOOD	SF-30QW	9615902032337
RANGE	ATWOOD	GCH6A-10E	5237002021363
MICROWAVE	HIGH POINT	R-V1735BBP	1106M08790
REFRIGERATOR	NORCOLD	EM925RSL-B	14248121
ROOF AIR	COLEMAN	N611R	051108076
TELEVISION	JENSEN	JE1911ACB	AC0411XQCNO3812
TELEVISION	VIZIO	30-E321-VL	1901722
REAR VIEW MONITOR	MAGNADYNE	M130C-WN	1108500069
L.P. TANK	MANCHESTER		1680813
SIDEWALL MATERIAL	NOBLE SELECT		11383841
SIDEWALL MATERIAL	NOBLE SELECT		11383840
REAR CAMERA	MAGNADYNE	C125	
SIDE CAMERA	MAGNADYNE	C-SDR-W	
SIDE CAMERA	MAGNADYNE	C-SDL-W	
PATIO AWNING	A AND E	912HW17.001B	13399002
SLIDE OUT AWNING	A AND E	86111CQ.0061B	13399794
SLIDE OUT AWNING	A AND E	86111CQ.0101B	13399793
SLIDE OUT AWNING	CAREFREE	BL0780025	210683922
CONTROL CENTER	SCHUMACHER	94-026-866W	
LEVELING SYSTEM	POWER GEAR		
PAINT CODE	DUPONT		822143FB
PAINT CODE	DUPONT		373-P806808
TIRE 1	CONTINENTAL		A39Y1XL2411
TIRE 2	CONTINENTAL		A39Y1XL2411
TIRE 3	CONTINENTAL		A39Y1XL2411
TIRE 4	CONTINENTAL		A39Y1XL2411
TIRE 5	CONTINENTAL		A39Y1XL2411
TIRE 6	CONTINENTAL		A39Y1XL2411
SPARE TIRE	CONTINENTAL		A39Y1XL2411



2012 Sunstar

STANDARD EQUIPMENT AT NO EXTRA CHARGE (unless replaced by Optional Equipment)

Chassis

Ford® F53 Chassis 362-hp 6.8L Super Duty V10 SEFI Triton® engine, TorqShift™ 5-speed automatic transmission w/tow/haul, 175-amp. alternator

Hydraulic brakes w/ABS

Trailer Hitch* 5,000-lb. drawbar/500-lb. maximum vertical tongue weight

7-pin connector

Stainless steel wheel liners (26P, 30T, 32K)

Stylized aluminum wheels w/22.5" tires (35F, 36D)

Cab Conveniences

Cab Seats armrests, lumbar support and multi-adjustable slide/recline/swivel

AM/FM stereo CD player

Chassis/house battery radio power switch

Power steering w/tilt wheel

Cab wraparound curtain

Cruise control

12-volt powerpoints

Map lights

Sunvisors

C.B. wire prep

Manually adjustable mirrors w/convex

Interior

32" LCD TV (NA 36D)

42" LCD TV (36D)

Amplified digital TV antenna system

Key-activated slideroom master lock switch

Satellite system ready

MCD American Solo® blackout roller shades (lounge, dinette, bedroom)

Mini blinds (galley)

OnePlace® systems center

Roof vent (lounge)

Powered roof vent (bath)

Tinted windows

Kitchen

Laminate countertops

2-door refrigerator/freezer

Microwave oven (26P, 30T, 32K)

Microwave oven w/range fan (35F, 36D)

3-burner range top w/storage below

Vented range hood (26P, 30T, 32K)

Bath

Laminate countertop

Flexible showerhead

Textured glass shower door

Skylight

Bedroom

Innerspring mattress

Bedsread, pillows and shams

Storage area below bed

Bunk beds w/foam mattresses, mattress covers and privacy curtains (32K)

Exterior

Premium high-gloss sidewall skin

Automatic entrance door steps

Mud flaps

Porch light

Lighted storage compartments

Heating & Cooling System

14,800 BTU roof-mount air conditioner (26P, 30T)

Two high-efficiency roof-mount air conditioners w/energy management system (32K, 35F, 36D)

30,000 BTU, low-profile furnace (26P, 30T)

35,000 BTU, low-profile furnace (32K)

40,000 BTU, low-profile furnace (35F, 36D)

System

AC/DC load center, 45-amp. converter/charger (26P, 30T)

AC/DC electrical distribution system, 45-amp. converter/charger (32K, 35F, 36D)

30-amp. power cord

PowerLine® energy management system (32K, 35F, 36D)

4,000-watt Cummins Onan® MicroQuiet™ gas generator (26P, 30T)

5,500-watt Cummins Onan Marquis Gold™ gas generator (32K, 35F, 36D)

2 deep-cycle Group 24 batteries

Battery disconnect system (chassis and coach)

Automatic dual battery charge control

Auxiliary start circuit

Exterior TV jack and AC duplex receptacle

Plumbing System

Service Center colored labels, cable TV input, pressurized city water hookup w/diverter valve, drainage valves, portable satellite dish hookup, power cord, 10' sewer hose

6-gallon LP water heater

Heated holding-tank compartment

Permanent-mount LP tank w/gauge

On-demand water pump

TrueLevel™ holding-tank monitoring system

Winterization Package water heater bypass valve and siphon tube

Safety

Seat belts

Child seat tether anchor (forward facing dinette bench)

LP, smoke and carbon monoxide detectors

10 BC fire extinguisher

Ground fault interrupter

High-mount brake lamp

Warranty⁷

12-month/15,000-mile basic limited warranty⁸

36-month/36,000-mile limited warranty on structure⁸

10-year limited parts and labor warranty on roof skin⁸

¹ The height of each model is measured to the top of the tallest standard feature and is based on the curb weight of a typically equipped unit. The actual height of your vehicle may vary by several inches depending on chassis or equipment variations. Please check with your dealer for further information.

² Sunstar floorplans feature a wide-body design -- over 96." In making your purchase decision, you should be aware that some states restrict access on some or all state roads to 96" in body width. Before making your purchase decision, you should confirm the road usage laws in the states of interest to you.

³ The load capacity of your motor home is designated by weight, not by volume, so you cannot necessarily use all available space when loading your motor home.

⁴ Capacities are based on measurements prior to tank installation. Slight capacity variations can result due to installation applications.

⁵ Capacities shown are tank manufacturer's listed water capacity (W.C.). Actual filled LP capacity is 80% of listing due to overfilling prevention device on tank.

⁶ Actual towing capacity is dependent on your particular loading and towing circumstances which includes the GVWR, GAWR, and GCWR as well as adequate trailer brakes. Please refer to the Operator's Manual of your vehicle for further towing information.

⁷ See separate chassis warranty.

⁸ See your dealer for complete warranty information.

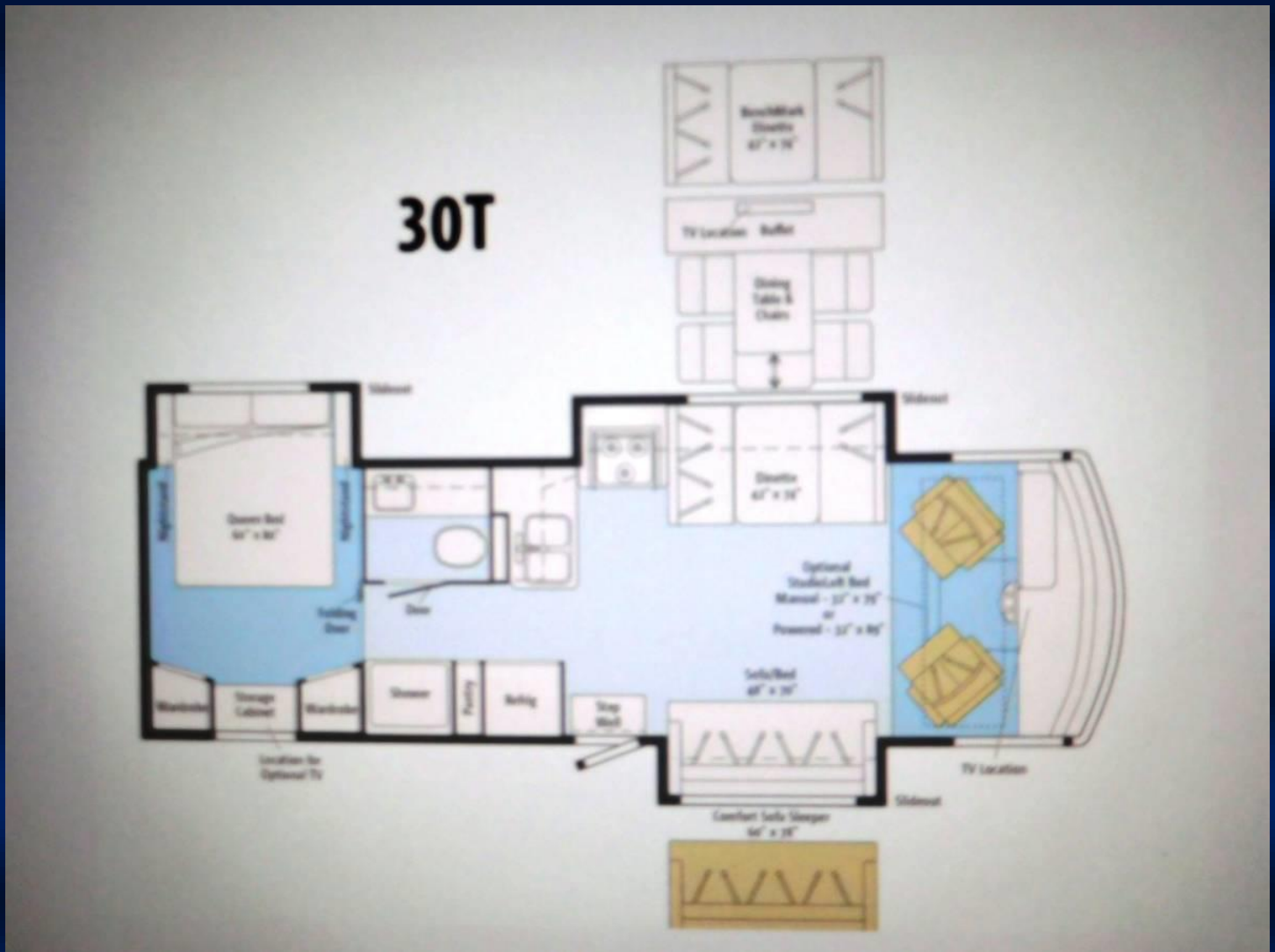
NA Not Available

Not all items available in combination. See dealer for details.

Winnebago Industries® continuing program of product improvement makes specifications, equipment, model availability, and prices subject to change without notice. Comparisons to other motor homes are based on the most recent information available at printing.

NOTES:

CSA specs may vary



<http://www.DreamFindersRV.com/RV/7708340/details.htm>