

## STANDARD FEATURES

### CHASSIS & AUTOMOTIVE FEATURES

Spartan Chassis- Mountainmaster  
 CAT Engine- 350 HP (7.9L)  
 Allison 3000 MH Electronic 6-Speed  
 Transmission  
 Raised Rail for Maximum Storage  
 Air Suspension  
 Anti-Lock Air Brakes  
 Exhaust Brake  
 Bilstein Shocks  
 Cruise Control  
 Intermittent Wipers  
 High Output Dash Heater & A/C  
 Exterior Heated Mirror W/Remote  
 Dual Side Fuel Fills  
 Michelin Radial Tires 275-80R225  
 Towing Hitch W/Wiring (Class III 10,000 GVW)  
 Auto-Hydraulic Levelers W/Touch Control  
 Driving Lamps

### ELECTRICAL & HEATING/AC

Two (2) 13.5 BTU Penguin Central A/C

42,000 BTU Furnace  
 Two (2) 6-Volt Deep Cycle Batteries  
 PowerTech 8.0 KW Diesel Generator  
 on Slide Tray  
 Auto Generator Changeover  
 50 Amp Service  
 Battery Disconnect Switch  
 Progressive Dynamic Converters (80 Amp)  
 Winterizing Kit  
 Water Heater- 10-Gallon W/DSI Gas & Electric  
 L.P. Leak Detector  
 C.O. Detector  
 Smoke Detector  
 Fire Extinguisher

### CONSTRUCTION SPECS

Aluminum Superstructure  
 Aluminum Sidewalls (16" Center)  
 1/2" Foam Insulation: R3 Laminated  
 to Sidewall  
 Fiberglass Insulation: Sidewalls (R10), Roof  
 (R19), Floor (R19)

High Gloss Gelcoat Fiberglass Exterior  
 Vinyl Roof W/3/8" Plywood Decking  
 Spartan Motor's One-Stop Customer  
 Care Road Side Assistance Program

### APPLIANCES/ACCESSORIES

Dometic 3862 Refrigerator  
 3-Burner Range and Oven  
 30" Spacesaver Microwave  
 24" Flat Screen TV (in Dash  
 Overhead)  
 TV (in Rear Bedroom)  
 VCR/DVD Combo  
 AM/FM Stereo W/In-Dash CD  
 Color Rear View Monitor System  
 TV Antenna W/Power Booster  
 Telephone Prep  
 Cable Prep  
 Satellite Prep  
 Monitor System  
 Skylight in Bath  
 Fantastic Fan in Bath

Rear Ladder  
 Side Awning 9000 (A&E or Carefree)

### INTERIOR APPOINTMENTS

7 Foot Ceiling Height  
 Padded Vinyl Ceiling  
 Oak Hardwood Cabinets  
 Solid Surface Countertops- Kitchen & Bath  
 Ceramic Tile Foyer  
 Ceramic Tile (Kitchen & Bath)  
 Day/Night Shades  
 Fabric Shadowbox Valances  
 Sleeper Sofa  
 6-Way Power Driver Seat  
 Flexsteel Leather Chairs (Driver &  
 Passenger)  
 Leather Euro Chair W/Freestanding  
 Ottoman  
 Courtesy Lights at Toe Kicks  
 Lights at Entrance Steps  
 Queen-sized Bed  
 Bedspread, Bed skirt, & Pillow Shams

## OPTIONAL FEATURES

13.5 Penguin Heat Pumps ILO Standard  
 15,000 Penguin ILO Standard  
 15,000 Penguin Heat Pumps ILO Standard  
 Microwave Spacesaver Conv. (G.E.) ILO Std.  
 Dometic 1062 New Dimension Ref. ILO Std.  
 Omit Oven & Add Doors & Shelves  
 Side-By-Side Ref. (Norcold Or Dometic)  
 Side-By-Side Stainless Steel Ref. (Norcold  
 Or Dometic)  
 Exterior freezer w/Slide tray  
 Ice Maker in Refrigerator  
 Compact Washer & Dryer (1-piece)  
 Washer & Dryer (2-piece)  
 Water Purifier W/Faucet  
 Fiberglass Roof  
 Dual Pane Windows

Exterior Security Lights (Each)  
 Side Awning 9000 A&E Or Carefree Ltd.  
 One-Touch Pwr. Side Awn. A&E Or Carefree  
 Window Awn. 9000 A&E Or Carefree Ltd.  
 Slide Topper 9000 A&E Or Carefree Ltd. (Ea.)  
 Ent. Door Awning A&E Or Carefree Ltd.  
 Ent. Box Door Awning A&E Or Carefree Ltd.  
 Sidevisors Maxi-Carefree  
 Power Front Visors  
 CB Antenna Only  
 CB Radio Complete  
 Docking Lights (6)  
 Weldex Side Cameras  
 Side-Out Cargo Tray (38" X 92")  
 Full-Body Painted Exterior

3M Film Front Mask  
 Burnished Glazed Maple Cabinets  
 Glazed Spice Maple Cabinets  
 Maple Hardwood Cabinets  
 Walnut Hardwood Cabinets  
 6-Way Seat W/Power Foot Rest (Passenger)  
 Ultra Leather ILO Std  
 Leather Sofa ILO Std  
 Leather Sofa ILO Desk and Chair  
 Dinette Folding Chairs (2)  
 Chrome Mirrors ILO Standard  
 Ceiling Mirror Feature  
 Electric Fireplace  
 10-Disc CD Changer (For Dash Stereo)  
 Dash Stereo Amp w/Subwoofer (MTX)

Home Theatre System w/Standard TV  
 Home Theatre System w/32" Flat TV  
 Driver Information Center  
 In-Dash Compass & Exterior Temperature  
 Outside AM/FM CD Stereo System  
 Kingdome Satellite Dish  
 Central Vac  
 Air Horns  
 Roof Spot Light- Remote Control  
 Mudflaps W/Stainless Steel Logo  
 Auto Rewind Water Hose (Spring)  
 50-Amp Power Cord Rewind (12-Volt)  
 2000 INV. (2) 6-Volt Batt.  
 Aluminum Wheels

### Limited TWO (2) Year Warranty

Travel Supreme offers a limited warranty on all our recreational vehicles for 24 months from date of purchase against defects in materials or faulty workmanship. It applies to the original owner only and is available upon request for inspection. Individual manufacturer warranties apply to various other components we use.

### FIVE (5) Year Structural Warranty

The limited 5 year structural warranty provides a guarantee against all defects in materials or faulty workmanship for the Aluminum/Steel super-structure for 60 months from date of purchase. It applies to the original owner and is available upon request for inspection.

### CATERPILLAR ENGINE 5 YEAR WARRANTY

All Caterpillar engines are warranted for 5 years or 6,000 operating hours whichever comes first.

### CUMMINS ENGINE 5 YEAR WARRANTY

All Cummins engines are warranted for 5 years or 100,000 miles

### SPARTAN CHASSIS 3 YEAR WARRANTY

All Spartan chassis are warranted for 3 years or 50,000 miles.

Travel Supreme reserves the right to make changes in products, components, materials, and prices at any time without obligation. Some photos are shown with optional equipment. Please see Standards and Options list for complete details.

### Your Nearest Dealer:



TRAVEL SUPREME, INC.  
 P.O. BOX 610 • 66149 STATE ROAD 19  
 WAKARUSA, IN 46573  
 574-862-4484 • FAX 574-862-2065  
 www.travelsupreme.com

# Travel Supreme

2 0 0 6 E N V O Y



# Envoy

CLASS A DIESEL PUSHER





**Distinctly Yours. Uniquely Travel Supreme.**



*Discover an RV well versed in elegance.*

One look around Envoy's impressive living area and the difference becomes crystal clear.

Elegance abounds. Custom Cherry hardwood cabinets and trim, brass trimmed lights, fabric shadow valances with day/night shades and large plush dining chairs are just a few of the things that make Envoy something special.

Practicality abounds as well, with ceramic tile flooring in high traffic area, 7' of headroom with vinyl padded ceilings for noise abatement, courtesy lights for toe kicks and entrance steps and fully ducted heat and air conditioning.

*Comfortable and Purposeful. Envoy's elegantly inspired interior feels like home. The spacious living area features a leather Euro chair with matching ottoman, a plush coordinating sofa sleeper and luxurious residential carpeting. Our meticulous attention to detail sets the Envoy apart.*



*You'll feel like royalty as you sleep in the stately bedroom with ultra-comfortable queen size bed with coordinating bedspread, skirt, padded headboard and pillow shams. The bedroom also features convenient nightstands, full-size wardrobes and plenty of storage space.*





Designed for efficiency yet strikingly beautiful, the Envoy's kitchen is fully furnished and ready to handle a crowd or just a quiet evening at home. It's equipped with a large refrigerator, 3 burner range, oven, microwave, large solid surface counter-tops, ample storage in extra tall cabinets and generous lighting. An optional 4-door refrigerator is shown here.



Convenience and style also merge in the bathroom. Envoy has a full-size shower that includes molded shelving. Custom cabinetry, solid surface counter tops with integrated sink and ceramic tile flooring are just some of the stylish touches you'll notice.



These extra large pass-through exterior storage compartments are easily accessible and hold an astonishing amount of large or small gear and supplies. Carpeting helps prevent shifting; lighting adds extra convenience.



The Envoy is completely designed to be functional but truly never loses touch with form. The built-in vanity is a great example of form and function. Beautiful cherry wood cabinets surround a vanity area that features brass lights, a window with day/night shades, a built-in TV and adequate counter space.



Cockpits offer outstanding comfort with soft leather chairs. A 6-way power driver's seat reduces fatigue. Additional standards are a 24" flat screen overhead TV, AM/FM/CD stereo, a color rear view monitor system, and an easy care ceramic tile landing.

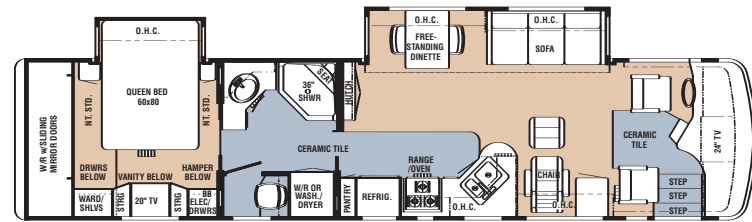


Dashboard convenience and function are superb. Gauges are easy to read and controls for cruise, stereo, heat, air conditioning and heated exterior mirrors are within easy reach. An adjustable steering wheel enhances driver comfort.

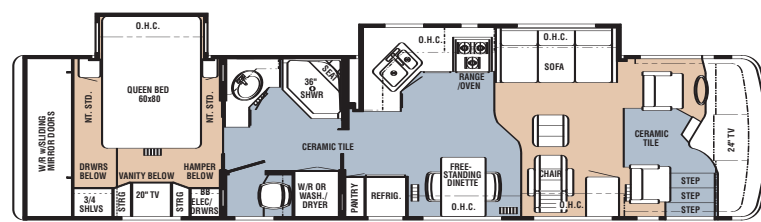




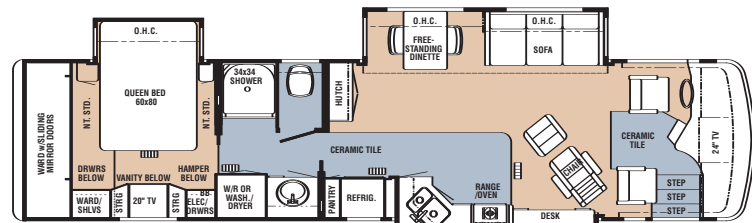
# 2006 ENVOY FLOORPLANS & SPECIFICATIONS



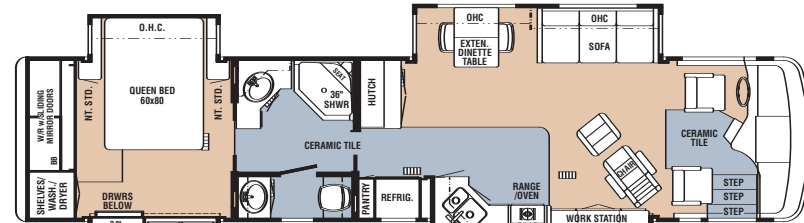
**38DS02**



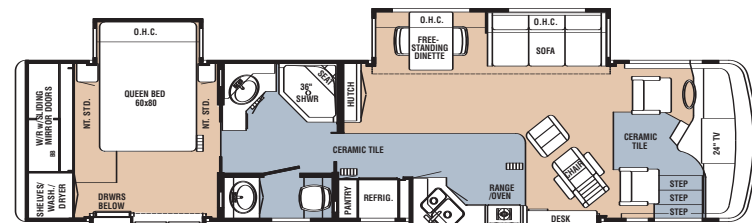
**38KS02**



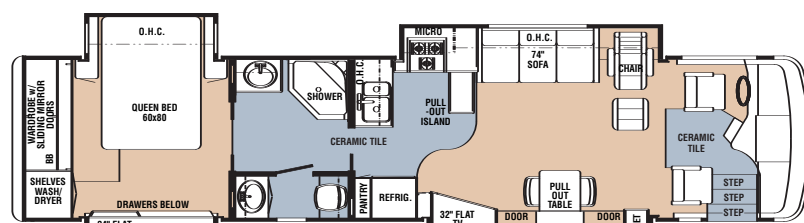
**38DS03**



**40DS04**

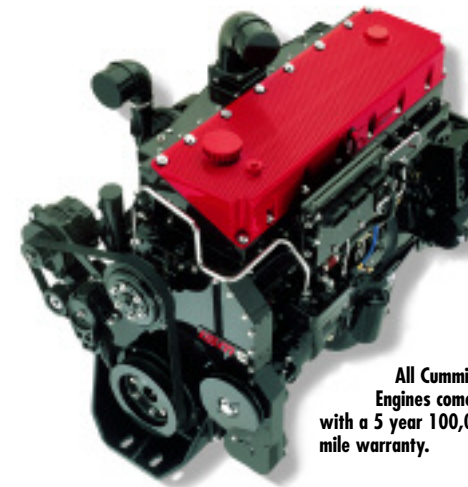


**38DS04**



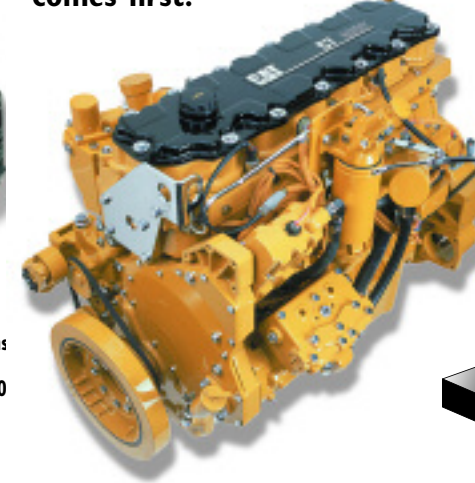
**40FL14**

**Cummins ISL Engine**  
(Optional for 40' Floorplans)



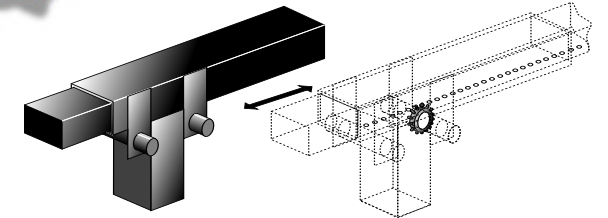
All Cummins Engines come with a 5 year 100,000 mile warranty.

**Caterpillar Engines come with a 5 year or 6000 operating hours warranty-whichever comes first.**



**LIMITED LIFETIME WARRANTY ON EVER-GLIDE SYSTEM**

The limited lifetime warranty on the Ever-Glide system provides a guarantee against all defects in materials or faulty workmanship for the steel Ever-Glide system (steel slideout supports) for as long as the original owner owns the unit. This warranty does not include the 12 volt power head and switches on the Ever-Glide system.



## CHASSIS & ENGINE SPECIFICATIONS

MODELS	SPARTAN CHASSIS	CATERPILLAR ENGINE HP	ALLISON TRANSMISSION	AXLE RATIO	FUEL GALLONS	WHEEL BASE	FRONT GAWR	REAR GAWR	GVWR	GCWR
38DS02	Mt. Master	350	Electronic 6 Speed	4.88	100	228	12,000	20,000	32,000	42,000
38DS03	Mt. Master	350	Electronic 6 Speed	4.88	100	228	12,000	20,000	32,000	42,000
38DS04	Mt. Master	350	Electronic 6 Speed	4.88	100	228	12,000	20,000	32,000	42,000
38KS02	Mt. Master	350	Electronic 6 Speed	4.88	100	228	12,000	20,000	32,000	42,000
40DS04	Mt. Master	350	Electronic 6 Speed	4.88	100	*266	12,000	20,000	32,000	42,000
40FL14	Mt. Master	350	Electronic 6 Speed	4.88	100	*266	12,000	20,000	32,000	42,000

\*Cummins ISL 400 hp engine is optional on the 40' floorplans. This option will increase the wheel base to 276.

## SIZES & CAPACITIES

MODELS	LENGTH	WIDTH	HEIGHT	INTERIOR WIDTH	INTERIOR HEIGHT	WATER TANK GAL.	WATER HEATER GAL.	SEWAGE TANK GAL.	GREY WATER GAL.	LP TANK GAL.
38DS02	38'8"	101"	13'	96"	7'	100	10	60	60	40
38DS03	38'8"	101"	13'	96"	7'	100	10	60	60	40
38DS04	38'8"	101"	13'	96"	7'	100	10	60	60	40
38KS02	38'8"	101"	13'	96"	7'	100	10	60	60	40
40DS04	40'6"	101"	13'	96"	7'	100	10	60	60	40
40FL15	40'6"	101"	13'	96"	7'	100	10	60	60	40

## SPARTAN ONE STOP CUSTOMER CARE PROGRAM "Roadside Assistance Program"

- 24hr. 7 day-a-week phone assistance
- Towing assistance/coverage
- Flat tire assistance/coverage
- Fuel delivery
- Lock-out protection



All models are built on dependable Spartan chassis, one of the finest available.

## OPTIONAL EXTERIOR PAINT COLORS



**Sterling Silver Full Body Paint**



**Sandstone Full Body Paint**



**Driftwood Full Body Paint**



**Smoked Onyx Full Body Paint**