

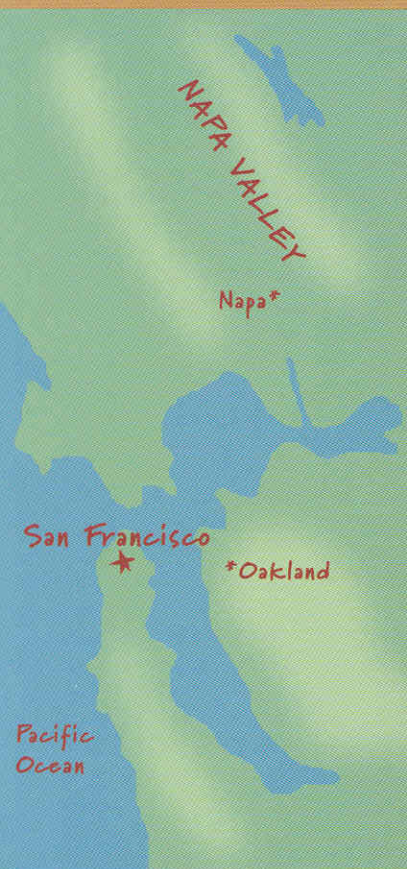


Travel the way you've always wanted. In style.



*Tour the
country in the
2004
Ultimate
Freedom.*





You've traveled the country. Maybe even been to Napa Valley a few times. Endless days of gorgeous weather. Winery tours. Now see it the way it should be seen in a 2004 Ultimate Freedom. The 2004 Freedom brings to luxury motorhoming unsurpassed levels of feature innovation, design and construction quality, plus manufacturer support. Features like triple-slide floorplans, a 160-amp alternator and a hydronic heating system for precision climate control throughout the coach.

It all starts with Winnebago Industries' exclusive 34,200 GVWR Spartan® pusher chassis. This unique monocoque design offers impressive driving and handling characteristics and easily accessible exterior storage. The 400-hp engine delivers extra power when towing vehicles or cruising the hills and valleys of Northern California.

Your Ultimate Freedom is constructed using the finest materials and meticulous craftsmanship at our state-of-the-art manufacturing facility, dedicated solely to luxury motor home production. Take the Ultimate Freedom out for a trial run and dream about where it could take you.

The Ultimate Freedom is fully loaded with entertainment features such as a 32" Sony® flat-screen plasma TV, stereo VCR, DVD player, video selection system, and an AM/FM stereo with Sony Dolby® 5-Channel QSurround™ sound system for unsurpassed audio clarity. An available digital satellite dish expands your viewing options and you can even add the In-Motion RV digital satellite system for reception while you're on the road. A 2,000-watt Heart Interface® inverter/charger lets you keep the entertainment going even when shoreline power is unavailable.

The cockpit puts you in total command with an ergonomic design that surrounds you with fingertip convenience. Standard upscale features include driver and passenger map lights, an electronic compass with outdoor thermometer, stereo with built-in six-disc CD changer, built-in Sony rearview color monitor, cell phone holder and roof-mounted air horns. For added comfort, the SmartWheel™ is wrapped in soft leather, tilts and even telescopes for perfect positioning. The steering wheel incorporates the windshield wiper, cruise, courtesy blink and headlight dimmer controls for easy access. Bus-style power sunvisors are standard and the front privacy curtain features a pull cord for easy opening and closing.

Sirius™ Satellite Radio programming provides upgraded listening choices with 100 channels of digital entertainment, including 60 commercial-free, original music channels. High-altitude satellites deliver crystal clear satellite programming anywhere in the United States with no signal fades. A Sirius Satellite Radio programming subscription is complementary for your first year of ownership.



Relax in the lounge area with Villa furniture, exquisite solid-wood cabinetry and rope lighting in the ceiling that creates a warm, relaxing ambience. Driver-side and passenger-side front slideouts (40KD and 40AD) create an incredibly spacious interior. Custom-designed, sculptured carpet and imported Italian ceramic tile floorcovering add an exquisite touch. For your privacy, select the day/night pleated shades or the available 2" wood blinds shown.



40KD Iron Wood with Washed Maple



You're ready for wine and cheese or gourmet meals with this fully equipped galley. The angled Corian® countertops and solid-wood cabinetry maximize your work and storage space. The woodwork is protected by a catalyzed topcoat finish that looks new for years. Appliances include a recessed, sealed-designed, three-burner range top; a 30" touch control microwave/convection oven or an available G.E. Advantium™ microwave/speedcook oven; and an available dishwasher. A double-bowl Corian sink holds large pots and pans with a separate spout for Everpure® purified water. The pullout cabinet (shown below) offers an additional storage area in the 40KD.



The four-door Norcold® refrigerator/freezer has plenty of space for food and includes an icemaker for added convenience. An exterior, basement-mounted, refrigerator/freezer is also available to provide additional cold storage.

The Rest Easy® Multi-Position Lounge offers unmatched seating flexibility and comfort. It starts as a plush sofa. Touch the button and it becomes a relaxing recliner with pullout ottoman. Touch the button again and it's a 60" x 75" bed. Choose the available leather upgrade (shown here) and enjoy the added features of dual recliners with a single pullout ottoman, as well as dual remote-controlled heat and massage features.



This available multi-function table seats two comfortably, expands to accommodate four and doubles as a convenient computer desk or hobby area. (available on 40ED and 40KD)



The standard rear slideouts on the 40ED create a luxurious bath and spacious bedroom. The bath area features a Moen® brass faucet, a solid-surface Corian oval sink, china toilet with electric flush, shower with a convenient seat and a hand-held Moen showerhead (shower seat not available with garden tub).

The 40KD offers impressive storage with the large chest of drawers and the spacious cedar-lined closet. Beautiful wood cabinetry provides even more convenient storage space while decorative wainscoting and a wood headboard add a touch of elegance. A 19" TV and rear stereo come standard as does a wall-mounted dimmer switch. The 40KD model also offers additional seating with the available lounge chair or Euro Recliner with ottoman.



Full-Body Paint

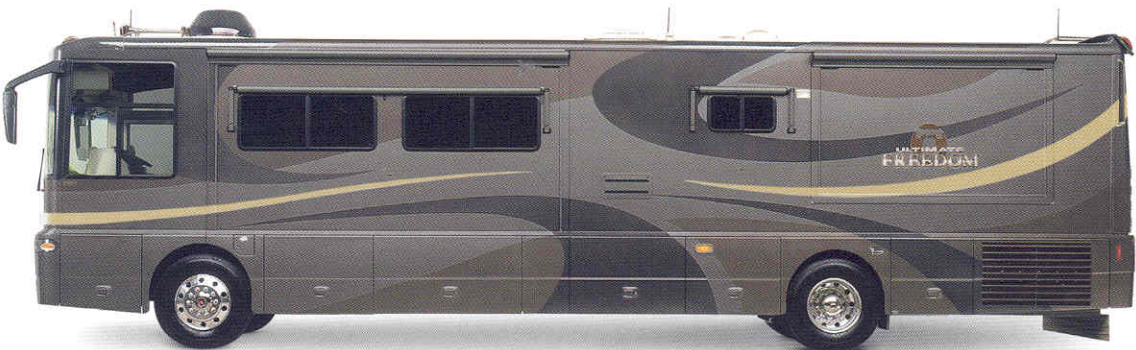
*Aloe
suggested with Celadon Valley interior*



*Cashmere
suggested with Cashmere interior*



*Granite
suggested with Iron Wood interior*



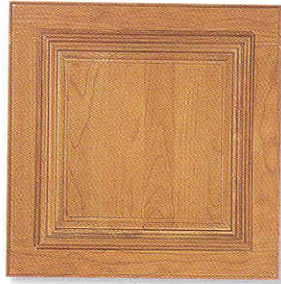
*Mahogany
suggested with Tuscany Blue interior*



Concert Cherry



Honey Cherry



Portsmouth Oak



Washed Maple



Cashmere



Celadon Valley



Iron Wood



Tuscany Blue



The available Euro Recliner comes with an ottoman so you can curl up with a good book or stretch out and watch a movie.



The available TripTek™ computer displays trip information on the Sony color rearview monitor, including distance to scheduled destination, time to destination, distance traveled, time traveled, fuel economy and a handy pre-trip checklist.

Select the available Alpine® GPS Mapping System to plan your route and stay on course anywhere in North America.

Dash-mounted dual climate controls are standard, allowing the driver and passenger to regulate their own comfort settings (passenger controls shown).

The remote, keyless entry lets you unlock the entrance and storage doors from up to 40 feet away while the KeyOne™ System lets you operate most other doors with a single, double-bitted key.



You'll appreciate the central vacuum cleaner system by Dirt Devil®. It comes with a full complement of accessories and a hose that can reach virtually any area of the interior, making housekeeping a snap. There's also a second connection in a storage bay and a VacPan® in the galley that whisks away sweepings without using any attachments.

Enjoy added peace of mind when you secure your valuables and important documents in the available hidden security vault.



The freestanding dining table provides a spacious dining area for two. It expands easily to accommodate guests.

No need for a laundromat with the available combination washer/dryer. It features multiple wash, time and temperature cycles to accommodate a wide variety of fabrics and tucks away behind decorative louvered wood doors when not in use.

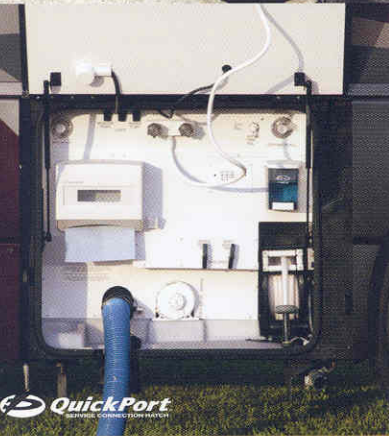


The bedroom features a queen-size Sleep Number® Bed by Select Comfort.™ Using the hand-held remotes on each side of the bed, you can quickly and independently adjust the mattress firmness to your ideal level of comfort and support...your Sleep Number, which is Your Key to a Perfect Night's Sleep.™

The leather Kustom Fit driver and passenger seats incorporate features like a wide seat base, integrated seat belt, six-way power assist, a powered slide cushion, a reclining back, and a heat and massage seat for added comfort. A powered stepwell cover panel creates a flat cab floor when traveling and the passenger seat pivots toward the living area. A power foot rest is available on the passenger side.



The sewer hose features a QuickConnect™ Coupling Valve for quick, clean hookups and a holster for easy storage.



The Ulti-Bay® storage bays are spacious and include a pass-through section to accommodate oversized items, while the slideout trays make access even easier. The storage bay doors feature gas struts and single-paddle latches with enlarged finger clearance for easy, one-handed operation.

Say good-bye to wrestling cords and hoses through small holes; the new QuickPort™ Service Connection Hatch makes hookup a snap. Plumbing connections and service functions are well-positioned and clearly labeled for ease of operation. Tank and system levels can also be checked at the convenient exterior monitor panel. Powered reels are available for your water supply hose and shoreline power cord.



StoreMore® is storage the way it is supposed to be. With the StoreMore slideout system, the driver-side front exterior storage bays actually move with the slideroom for easy access, even with the slideout extended.



Keep your electrical system running smoothly even when operating your central air conditioning on 30-amp. shore power. The PowerLine® Energy Management System monitors onboard 110-volt electrical usage and minimizes the nuisance of tripped campground circuits by regulating the operation of post-ponable electrical loads during periods of heavy usage. As demand decreases, PowerLine automatically returns power to the secondary appliances and systems.



Conditioning. TrueAir utilizes superior cooling technology to supply optimum environmental control throughout the coach. At the heart of the system is a Coleman®-Mach® cooling unit located in the basement to provide a lower vehicle profile while reducing noise and eliminating condensation runoff. You'll also find this location is much easier to service and provides a lower center of gravity than traditional, roof-mounted air conditioning units. A heat pump comes standard so TrueAir can help keep your Ultimate Freedom warm on cool days without using the hydronic heating system.

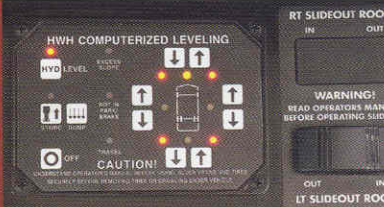
Precision climate control is assured thanks to Winnebago Industries' exclusive TrueAir® Residential Central Air Conditioning. TrueAir utilizes superior cooling technology to supply optimum environmental control throughout the coach. At the heart of the system is a Coleman®-Mach® cooling unit located in the basement to provide a lower vehicle profile while reducing noise and eliminating condensation runoff. You'll also find this location is much easier to service and provides a lower center of gravity than traditional, roof-mounted air conditioning units. A heat pump comes standard so TrueAir can help keep your Ultimate Freedom warm on cool days without using the hydronic heating system.



The Ultimate Freedom offers the superior comfort and convenience of hydronic heating as a standard feature. The hydronic system utilizes heated water to provide reliable and consistent heating throughout the coach. Individual heat exchange units in five separate locations provide radiant zone heating throughout the coach and basement. This innovative system includes an engine pre-warm feature so you can start the engine with confidence when cooler weather hits and it also provides a continuous supply of hot water for the freshwater system. For added flexibility, the hydronic system does not use LP, but can be fueled by either 110-volt AC or the onboard diesel fuel supply for unlimited heat, even when traveling.



The OnePlace™ Systems Center places important and frequently used switches, gauges, level indicators and controls in one convenient location so you can easily check them at a glance.



Automatically place your coach on an even plane when you've stopped for the day. Four HWH® leveling jacks provide more than 20 tons of hydraulic leveling power.

Mirrors

Top-mounted electrical remote-control mirrors feature large flat and convex surfaces, and are strategically positioned to provide increased visibility and safety. Electric defrost helps keep mirrors free of frost on cool mornings.

Service Points

The user-friendly design of the Ultimate Freedom extends to the service points where fluid fills, air cleaner and diagnostic plugs are all easily accessible.

83.14" Wheel Track

The Ultimate Freedom features an ultra-wide wheel track for enhanced handling and stability.

Dual Fuel Fills

Fuel fills on both sides of the coach make fueling easy from any pump.

Tires

Michelin® XZA1 tires are mounted on precision-machined, polished aluminum wheels.



Fiberglass Roof

Ultimate Freedom features a one-piece fiberglass roof backed with a 10-year limited parts-and-labor roof skin warranty.

Insulated Roof Vents

Insulated roof vents improve thermal efficiency. Built-in sensors close vents automatically in the event of rain. The room-darkening, vent/shade package is standard.

Hitch

The standard trailer hitch has an impressive 10,000-lb. towing capacity.^e

Side-Mounted Radiator

The radiator is mounted on the side of the coach for improved airflow and cooling.

You'll love relaxing in the shade of the Carefree® patio awning after a casual stroll. It extends and retracts electronically and is constructed with anodized aluminum hardware that matches your coach's body color. Individual awnings over the entrance door and side windows provide additional shade. An exterior entertainment center enhances the experience with an AM/FM radio with a CD player with a remote.

Air-line System Draining

Draining the air-line system of condensation is recommended on all vehicles with air brakes and air suspension. Automatic system dryers and heated air system drains include remote lanyard controls so you'll never have to crawl under the chassis to perform this routine maintenance on your Ultimate Freedom.



The Ultimate Freedom is powered by a 400-hp ISL 8.9L Cummins® turbo diesel engine. It features turbo-charging, after cooling and electronic engine controls for plenty of diesel pusher torque and power. For better braking, the Jacobs Engine Compression Brake™ utilizes engine exhaust to slow the vehicle, reducing wear on the brake pads.



The Allison® 3000 MH six-speed electronic control transmission is a proven performer. Its innovative smart logic system enables it to learn your driving habits and fine-tune shift points accordingly for maximum performance.

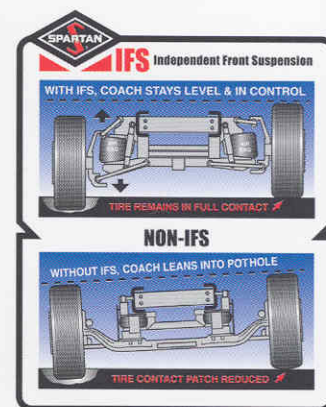


The standard 7,500 watt Onan® Quiet Diesel™ generator delivers plenty of power for running multiple AC loads. It even travels in and out on pneumatic-powered slides for easy servicing.



The customized, full-width rear mud guard helps deflect dust and small stones from the undercarriage and helps keep the coach and tow vehicle clean.

The independent front suspension (IFS) on the Ultimate Freedom can make any road seem like a newly paved highway. Some luxury coaches still use straight axle technology that transfers road forces from wheel to wheel—reminiscent of heavy trucks. IFS, however, provides greater lateral stability, eliminates bump steer and lets each wheel move independently through its range of motion. Each tire maintains better contact with the road, and you get a smooth ride comparable to that of a luxury sedan.





Bigger is better. You might assume all luxury-class motor coaches deliver a high-performance ride and exceptional handling. But the fact is, not all luxury-class motor coaches are created equal. The Ultimate Freedom utilizes the proven performance of a large, high-volume air bag strategically positioned at each wheel-suspension point to deliver responsive handling and a velvety smooth ride. Beware of less-advanced systems that use smaller, lower-volume bags that require multiple air bag mountings at each wheel. Not only are they more cumbersome, the additional air lines and connections may increase the opportunity for system leaks.

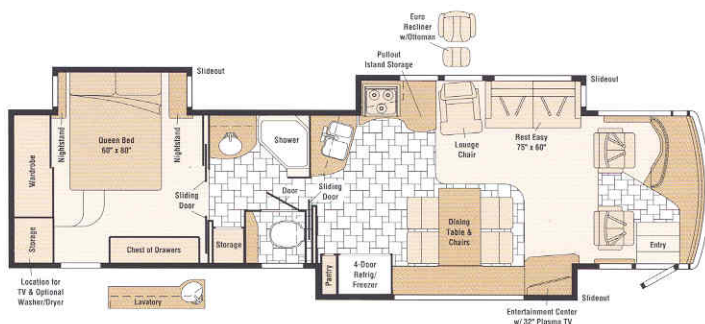
Anti-lock air brakes deliver impressive stopping power. Both brake and accelerator pedals are adjustable for your driving convenience.



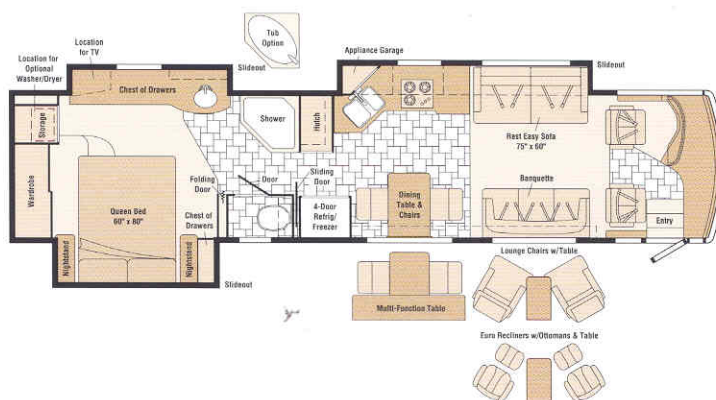
An auxiliary air supply with a detachable 50-foot hose offers a ready supply of compressed air.



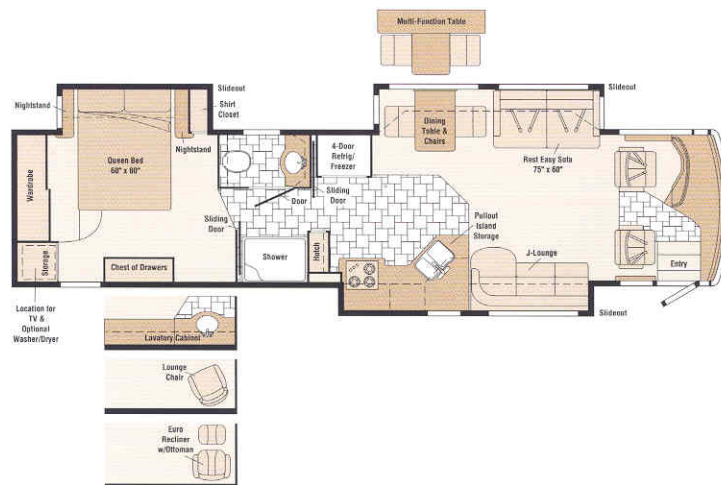
40AD NEW



40ED



40KD



Seat Belts



Ceramic Tile Floorcovering

Note: Dimensions shown are for sleeping space only and may vary due to styling differences. Dashed lines denote overhead storage areas.

Measurements & Weights

	NEW 40AD	40ED	40KD
LENGTH	39'11"	39'11"	39'11"
EXTERIOR HEIGHT ^a	11'10"	11'10"	11'10"
EXTERIOR WIDTH ^b	8'5.5"	8'5.5"	8'5.5"
EXTERIOR STORAGE ^c (cu. ft.)	163	163	175.2
INTERIOR HEIGHT	6'8"	6'8"	6'8"
INTERIOR WIDTH	8'0.5"	8'0.5"	8'0.5"
FRESH WATER CAPACITY W/HEATER (gal.)	90	90	90
HOLDING TANK CAPACITY – BLACK (gal.)	46	46	46

Automotive/Chassis

	40AD	40ED	40KD
Chassis – Spartan Mountain Master GT/Winnabago Industries® ULTI-BAY Monocoque, Engine Cummins ISL 8.9L turbo-charged/after cooled diesel, 400-hp @ 2,000 RPM; 1,200 ft. lbs. @ 1,300 RPM, electronic speed control, engine block heater (1,000 W), Jacobs Engine Compression Brake, Allison 6-Speed Electronic 3000 MH World Transmission touch pad gear selector, oil-to-coolant transmission cooler, ratios: 4 = 1.00:1; 5 = .75:1; 6 = .65:1, side-mounted radiator w/hydraulically driven fan, 50-state certification emissions control system, Independent Front Suspension (IFS) Spartan/Granning, IFS1460, front suspension, Rear Axle Meritor® RS-19-145 w/Quiet-Gear, axle ratio 4.88, Rear Suspension Reyco® RS240AR air suspension, Brakes full air, engine driven compressor, air dryer w/automatic heated moisture ejector, lanyards on air tanks, four-wheel ABS, front 16.5" x 5" drum, rear 16.5" x 7" drum, park; rear axle service brakes, Battery Group 31 commercial, 2,000 CCA, Alternator 160-amp., Fuel Tank 125-gallon, LH & RH fill; fuel/water separator, Tires Michelin XZA1	S	S	S
Air Accessory Manifold air hose, pressure gauge, quick connect, shutoff, manual, Air Suspension , Leveling Jacks HWH hydraulic, automatic touch pad w/indicator lights, Trailer Hitch ® 10,000-lb. drawbar/500-lb. maximum vertical tongue weight & wiring, Wheels stylized aluminum	S	S	S

Cab Area & Driver Conveniences

	40AD	40ED	40KD
Cigarette Lighter/12-Volt Powerpoint, Compass electronic w/outdoor thermometer, Console Center Cabinet , Defroster Fans (2) auxiliary 2-speed w/instrument panel switch, Floor Mat carpeted, driver, Hood Release w/exterior key locks, Instruments/Gauges speedometer/odometer, tachometer, voltmeter, oil pressure, engine coolant temperature, fuel gauge, headlamp switch, transmission temperature gauge, dual air pressure gauge, turbo-boost gauge, ignition switch, horn, Leather Cab Seats 6-way power assist w/integrated seat belts, multi-adjustable armrests, adjustable electric lumbar support, map pocket, swivel, multi-adjustable power recline, heated & massage, slide cushion powered (driver), Map Lights (2), Color Monitor System rearview w/single camera & 1-way audio, Sony, Power Door Locks keyless entry w/remote, Shades light filtering, cab windows, wraparound w/pull cords, Steering Wheel custom 18" multi-plex SmartWheel leather wrapped w/Ultimate® logo & controls for windshield wipers, ICC courtesy blink lights, cruise, tilt, telescope w/power assist, Sunvisors (2) powered, Trim Panel driver side w/drink holder, 12-volt powerpoint, transmission shift pad, cellular phone holder, switches, Trim Panel passenger side w/drink holder, Turbo-boost Gauge , Window (driver & passenger) partial slider w/screen, dual-glazed	S	S	S
Cab Seat passenger w/powered footrest	0	0	0
GPS Navigation System ® Alpine	0	0	0
Trip Computer TripTek	0	0	0

Entertainment

	40AD	40ED	40KD
CB Prep antenna, antenna lead, 12-volt power supply, Entertainment Center (Exterior) AM/FM/CD Radio w/remote, 12-volt powerpoint, AC duplex receptacle, TV jack, radio antenna, speakers (2), telephone jack, Radio (Cab) satellite system ready, AM/FM stereo CD w/6-disc CD changer, roof-mounted flexible rubber antenna, Radio Power Switch main/auxiliary battery, Satellite System Sirius, antenna, receiver, 1-year pre-paid subscription, Sound System Deluxe Sony, 5-channel w/QSurround, VCR/DVD stereo w/remote, amplifier, cube speakers (5), sub-woofer (1), Stereo System (Bedroom) ® AM/FM CD player, Telephone input & interior jacks, TV 19" Color AC w/remote, bedroom, TV 32" Color AC w/remote, Sony plasma/flat screen, TV Enhancement Package antenna (amplified), antenna check reminder light, coax wiring, cable input, exterior jack, interior jack(s), Video Selection System	S	S	S

Measurements & Weights (continued)

	NEW 40AD	40ED	40KD
HOLDING TANK CAPACITY – GRAY (gal.)	54	54	54
LP CAPACITY ^d (gal.)	39	39	39
FUEL CAPACITY (gal.)	125	125	125
GCWR (lbs.)	44,200	44,200	44,200
GVWR (lbs.)	34,200	34,200	34,200
GAWR – FRONT (lbs.)	14,200	14,200	14,200
GAWR – REAR (lbs.)	20,000	20,000	20,000
WHEELBASE	267"	267"	267"

Entertainment (continued)

	40AD	40ED	40KD
Satellite Dish ® Winegard® RV digital, elevation sensing unit, manual	0	0	0
Satellite Dish ® Winegard, RV digital, power	0	0	0
Satellite System RV Digital, In-Motion	0	0	0

Interior

	40AD	40ED	40KD
Blinds micro galley, micro-pleated, day/night, lounge, dining & bedroom area, Ceiling vinyl, Ceiling Trim Panel w/rope lighting, galley and lounge area, Central Vacuum Cleaner , Cupholder(s) , Shade pleated, front wraparound w/pull cords, Light decorative dining w/dimmer switch, Lights fluorescent, recessed w/wall switches, Lights incandescent, Lights halogen, under overheads, Lights reading, Light(s) wall lamp(s), Shade Package roller design, blackout for all roof vents, Sliding Stepwell Cover Panel powered, Windows dual-glazed/thermo-insulated	S	S	S
Barometer/Thermometer/Clock	S		
Wood Blinds 2"	0	0	0

Cabinetry

	40AD	40ED	40KD
Concert Cherry stile-and-rail construction w/fluted edge, raised panels, hidden hinge	0	0	0
Honey Cherry stile-and-rail construction w/fluted edge, raised panels, hidden hinge	0	0	0
Portsmouth Oak stile-and-rail construction w/fluted edge, raised panels, hidden hinge	0	0	0
Washed Maple stile-and-rail construction w/fluted edge, raised panels, hidden hinge	0	0	0

Countertops

	40AD	40ED	40KD
Solid-Surface Countertops Corian w/fluted edge, galley & bath	S	S	S

Floorcovering

	40AD	40ED	40KD
Ceramic Tile used throughout galley, cab entrance & bath areas	S	S	S
Carpeting w/pad			

Furniture/Dining & Lounge Area

	40AD	40ED	40KD
Banquette (Fabric) Villa w/throw pillows & slideout storage drawer		S	
Banquette (Leather) Villa w/throw pillows & slideout storage drawer		0	
Buffet w/solid-surface countertop		S	
Dining Table & Chairs (2) free standing, (2) folding	S	S	S
Dining/Computer Table & Chairs (2) free standing, (2) folding		0	0
Entertainment Center w/storage	S		
Lounge Chair (Fabric) Villa hoop-base reclining, swivel/rocker, footrest	S		
Lounge Chair (Leather) Euro w/ottoman	0		
Lounge Chairs (2) (Leather) Euro Recliner w/ottomans (2)		0	
Lounge Chairs (2) (Leather) Villa hoop-base, w/end table		0	
REST EASY® Multi-Position Lounge (Fabric) Villa w/throw pillows & fold-down beverage tray	0	0	0
REST EASY® Multi-Position Lounge (Leather) Villa w/throw pillows & fold-down beverage tray	0	0	0
REST EASY® Multi-Position Lounge (Leather) Villa w/dual controls, heat and massage w/slideout storage drawer	0	0	0

Furniture/Dining & Lounge Area (continued)

	40AD	40ED	40KD
J-Lounge ^f (Fabric) Villa w/slideout storage drawer			S
J-Lounge ^f (Leather) Villa w/slideout storage drawer			O

Galley

	40AD	40ED	40KD
Coffemaker, Faucet single-control w/pull-out sprayer, Moen, Hutch, Light fluorescent, under cabinet, Microwave/Convection Oven w/Range Fan ^f residential 30" G.E.® Mirrors, Range Top 3-burner, recessed, sealed burners, Princess, Range Cover w/solid-surface, Refrigerator/Freezer four door, w/wood raised-panel inserts, icemaker, Norcold, Roof Vent(s) powered ventilation fan w/rain sensor, Silverware Tray, Sink double-bowl molded Corian w/solid surface sink covers, Wastepaper Basket, Water Purification System separate faucet, Everpure	S	S	S
Appliance Storage Cabinet		S	
Cutting Board slideout		S	
Dishwasher built-in under countertop		O	O
Dishwasher drawer-style	O		
Island storage	S		S
Microwave/Speedcook Oven w/Range Fan ^f residential 30" G.E. Advantium	O	O	O
Pantry ^f	S		S

Bath

	40AD	40ED	40KD
Cabinet linen w/adjustable shelves, Faucet (shower) single-control w/flexible showerhead, Light shower, Lights makeup, Mirror(s), Roof Vent(s) powered ventilation fan w/rain sensor, Shade Package interior, roller design, blackout for all roof vents, Shower, Shower Door glass, Showerhead hand-held, Skylight, Sink(s) oval, solid-surface, Tissue Holder, Toilet (China) electric flush, Towel Bar	S	S	S
Cabinet(s) lavatory	S		S
Cabinet(s) medicine	S		S
Faucet (lavatory) single-control	S		
Faucets (2) (lavatory) dual-control, Posi-Temp® Moen			S
Magazine Rack	S	S	
Shower/Garden Tub ^f		O	
Shower Seat ^f fold-down	S	S	
Shower Seat molded	S		S
Towel Ring(s)			S

Bedroom

	40AD	40ED	40KD
Bed queen-size mattress, Sleep Number by Select Comfort, w/underbed storage, Bedsprad w/pillow shams, Throw Pillows, Sleeping Pillows, Headboard, Lights decorative wall lamps, Light ceiling w/dimmer switch, Lights adjustable reading, Nightstands (2), Storage Cabinet w/louvered doors, Wainscoting w/chair rail, Wardrobe Cabinet carpeted floor, cedar-lined, clothes rod, light, shelf, shoe shelf	S	S	S
Cabinet lavatory, drawers, doors and sink with dual-control faucet	O	S	O
Lounge Chair fabric, Flexsteel® ottoman w/inside storage			O
Lounge Chair leather, Euro w/ottoman			O
Mirror w/beveled edge		O	
Shirt Cabinet		S	S

Exterior

	40AD	40ED	40KD
Air Horns roof-mounted, Assist Handle acrylic, lighted w/Ultimate logo & doorbell button, Awnings electric, patio w/wind sensor & remote entrance door, Awnings window, Awning Rail, Compartment Tray slideout, Door entrance w/separate screen door, deadbolt lock, keyless entry w/remote, dual-glazed window, Door fuel-fill, locking LH & RH sides, Doorbell, Entrance Door Step single, electric w/doorjamb switch, Ladder, Lights docking lamps, Lights fog lamps, Light porch light w/interior switch, Light service, driver side, Light under hood, Mirrors top-mount, wide angle, electric remote w/defrost, Mudflaps (2) rear, Mud Guard full-width (stainless steel w/lettering), Receptacle AC duplex, Sidewall Skin 1-piece smooth fiberglass, high-gloss, Spotlight roof mounted w/wireless remote, Squeegee, Storage Compartments smooth valance panels, trunk liner, gas struts, TriMark® KeyOne System w/power locks & remote, lights, Undercoating double clearcoat finish	S	S	S
Exterior Full Body Paint Options Aloe, Cashmere, Granite, Mahogany	O	O	O
Refrigerator/Freezer portable, Norcold	O	O	O

Systems

	40AD	40ED	40KD
Automotive Heater/Air Conditioner dual climate control, Auxiliary Start Circuit, Batteries (Coach) (3) deep cycle, Battery Disconnect System (Coach), Battery Charge Control automatic dual, Battery Charging System (Chassis), Drain 1 1/2" water tank, Electrical Distribution System AC & DC breaker panels, Hydronic Heating System w/continuous hot water & engine preheat feature, Generator ^f 7,500-watt, Onan Quiet Diesel, Generator/Shoreline Automatic Changeover Switch, Inverter/Charger converter, 2,000-watt w/remote panel, ONEPLACE® Systems Center wall-mount, battery digital voltmeter, battery condition gauge, POWERLINE™ energy management display, generator hourmeter gauge, generator start/stop switch, heating/A/C thermostat, holding tank levels, LP tank level, solar panel/battery charger light, water heater switch, water heater on light & pilot indicator light, water pump switch, water tank level, Power Cord 50-amp. Superflex cord, Power Cord Reel 12-volt, POWERLINE™ Energy Management System, Service Center (Drainage/Water) drainage valves, holding tank flushing system, sewer hose, Quick CONNECT coupling valve, monitor panel, city water hookup/tank diverter fill, drain for fresh water system, exterior wash station w/pump switch, paper towel holder, soap dispenser, Service Center (Electrical) cable TV input, power cord, telephone input, QuickPort Service Connection Hatch, Solar Panel 10-watt battery charger, Tank Flushing System black tank only, Tank holding, heated compartment, Tank LP, permanent mount w/gauge, TRUEAIR Residential Central Air Conditioning System heat pump, Water Pump demand, variable speed, Water Supply Hose Reel 12-volt, Water System Winterization Package water heater bypass valve & siphon tube, Water Tank Fill gravity, Water Tank Fill pressurized city hookup w/diverter valve	S	S	S
Washer/Dryer Combination ^f		O	O

Slideout

	40AD	40ED	40KD
Slideout Room bed w/slidoorm cover	S	S	S
Slideout Room chest of drawers/vanity w/slidoorm cover		S	
Slideout Room J-lounge/galley w/slidoorm cover			S
Slideout Room refig/buffet w/table/entertainment center w/slidoorm cover	S		
STOREMORE Slideout Room galley/sofa w/slidoorm cover		S	
STOREMORE Slideout Room dining/sofa w/slidoorm cover			S
STOREMORE Slideout Room galley/chair/sofa w/slidoorm cover	S		

Safety

	40AD	40ED	40KD
Assist Bar(s) interior, Detectors/Alarms LP leak, smoke, carbon monoxide, Fire Extinguisher 10 B.C., Ground Fault Interrupter, Light center high-mount brake lamp, Lights courtesy w/wall switches, Lights daytime running lamps, Seat Belts cab, 3-point, integrated with seat, Seat Belts lap (in selected areas), Window escape, Windshield laminated safety glass	S	S	S
Security Vault w/key	O	O	O

Warranty^g

	40AD	40ED	40KD
12-month/15,000-mile basic warranty, ^h	S	S	S
36-month/36,000-mile warranty on structure, ^h			
10-year limited parts & labor warranty on roof skin ^h			

- a The height of each model is measured to the top of the tallest standard feature and is based on the curb weight of a typically equipped unit. The actual height of your vehicle may vary by as much as 2" depending on chassis or equipment variations. Your vehicle may be equipped with optional features that increase the overall height. Please check with your dealer for further information.
- b Ultimate Freedom floorplans feature a wide-body design—over 96". In making your purchase decision, you should be aware that some states restrict access on some or all state roads to 96" in body width. Before making your purchase decision, you should confirm the road usage laws in the states of interest to you.
- c Your motor coach's load capacity is designated by weight, not by volume, so you cannot necessarily use all available space when loading your motor coach.
- d Capacities shown are tank manufacturer's listed water capacity (W.C.). Actual filled LP capacity is 80% of listing due to overfilling prevention device on tank.
- e Actual towing capacity is dependent on your particular loading and towing circumstances, which includes the GVWR, GAWR and GCWR, as well as adequate trailer brakes. Please refer to your vehicle's operator's manual for further towing information.
- f Not all items available in combination. See dealer for details.
- g See separate chassis warranty details provided in owner's packet.
- h See your dealer for complete warranty information.
- S Standard
- O Optional
- Winnebago Industries continuing program of product improvement makes specifications, equipment, model availability and prices subject to change without notice. Comparisons to other motor coaches are based on the most recent information available.

ULTI-BAY[®] CHASSIS

Ulti-Bay is Winnebago Industries' exclusive monocoque chassis design that provides abundant mid-coach storage, impressive driving and handling performance, as well as 10,000 pounds of towing capacity.**

Ulti-Bay combines front and rear Spartan Custom Chassis elements with an advanced truss design that eliminates bulky, cumbersome center rails. To provide even more mid-coach storage, large components such as the water heater, furnace and holding tanks are located fore and aft of the mid-section to create large, unobstructed storage bays.



The Ulti-Bay chassis, combined with Winnebago Industries' proven SuperStructure[®] construction process, helps make the Ultimate Freedom one of the strongest and most durable motor homes on the road. It's all part of making the Ultimate Freedom the Ultimate Motor Home Experience.

Interlocking joint construction utilizes advanced aluminum structural components to create integrated floor-to-sidewall and sidewall-to-roof joints. This design effectively distributes the weight of the walls and roof, making a stronger and more durable body than some competitors' designs, which rely on screws to carry the weight.

Winnebago Industries invented and perfected Thermo-Panel[®] manufacturing. The result is an advanced composite construction that combines a low-maintenance, durable exterior panel with welded aluminum support substructures embedded in a high-density block foam insulation core to create a very strong, durable and lightweight sidewall.

** Ultimate Freedom features a tow bar rated at 10,000-lbs. capacity as a standard feature. Actual towing capacity can be further limited by other factors such as the weight of the vehicle as loaded and the type of towing to be performed. Check with your Ultimate Freedom dealer for additional towing specifications.



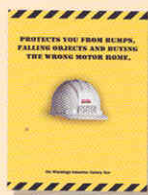
Recognized quality. Recreation Vehicle Dealer Association members annually rate RV manufacturers on the quality of their products and sales and service support. Winnebago Industries has achieved the coveted Quality Circle Award every year since its inception, the only major motor home manufacturer to do so.



Committed to service. We back our motor coaches with the best service after the sale in the industry.

- 12-month/15,000-mile basic limited warranty
- 36-month/36,000-mile warranty on structure
- Standard 10-year limited parts-and-labor roof skin warranty
- Complimentary 24-hour roadside assistance program
- TripSaver Fast Track Parts. TripSaver guarantees that in-stock warranty parts ship directly to your dealer within 24 hours.
- National dealer service network

For sales and service information contact:



All motor homes are not created equal.

Learn more about what sets Winnebago Industries apart. Ask your dealer for this guide. It will help you learn what makes Winnebago Industries motor homes distinctly superior to other brands.



Warning: Joining WIT has been known to cause excessive fun. Winnebago-Itasca Travelers (WIT) is a club for owners of Winnebago Industries motor coaches. WIT is a great way to meet people and offers you:

- Caravans and rallies
- Local and state groups
- RV travel benefits

winnebagoind.com

Seat belts are your most important hookup. Always buckle up.
NYSE listing: WGO

©2003 Winnebago Industries, Inc. Printed in USA.

