

2006 WINNEBAGO ADVENTURER®

The Best-Selling Class A Motor Home Just Got Better.



HOME IS WHERE YOU ROAM WITH YOUR 2006 ADVENTURER.

Innovations and user-friendly features abound.



38J - Lakeside with Sierra Maple

DESTINATION: PERFECTION.

Innovative features and user-friendly amenities have helped make Adventurer the industry's best selling motor home. The 2006 Adventurer adds to that proud heritage with a host of improvements and upgrades to make your RV adventures even more enjoyable.

Step inside and you'll be amazed at the spaciousness created by the 7'2" interior ceiling height. New upgrades include Sony® televisions, full-extension drawer slides, an available washer-dryer and an easy-to-clean vinyl ceiling. The all-new 38T features dual slides, each 17'6" long, that expand to create a wide-open floorplan like no other.

To help keep you comfortable, standard dual-glazed windows provide increased thermal efficiency. And to control the amount of light and for

additional privacy, our standard day/night pleated shades are found in the lounge, dinette and bedroom areas.

Choose from three striking interior color schemes and four wood choices to fit your style. Portsmouth Oak, Concert Cherry, Washed Maple or Sierra Maple cabinetry add to the Adventurer's ambiance with their durable and beautiful catalyzed finish.

An entertainment center, standard on the 37B, 38J, 38R and 38T, features a 27" Sony flat-face TV. That big-screen experience is complemented by the unparalleled sound delivered by the Sony Home Theater Sound System, with amplifier, DVD/VCR, receiver, five speakers and subwoofer. And the available 600-watt inverter lets you enjoy your favorite programs even when you're not connected to shoreline or generator power.

On the cover: 38J in Ebony with full-body paint.



IT'S ALL INSIDE.

Entertain the possibilities.



33V - Prairie Fire with Washed Maple



37B - Terrace View with Concert Cherry

EXTREMELY COMFORTABLE INTERIORS.

While the floorplan and appointments of your new Adventurer will make you feel at home immediately, you will appreciate the benefits of our SmartSpace™ design philosophy more and more with each new day. SmartSpace helps make the most of interior living areas by maximizing functionality and incorporating space-saving, user-friendly features.

The standard rear slideout helps turn the Adventurer's spacious bedroom into your personal sanctuary at day's end. Here you'll find abundant living and storage space, highlighted by a mirrored wardrobe and a separate changing area (the 37B incorporates two rear slideouts). You can catch your favorite show on the bedroom's Sony flat-face TV, using the built-in remote extender to control the front DVD/VCR while you're relaxing in the bedroom. You can even upgrade to an available rear stereo system with AM/FM/CD player and alarm clock.

Sleep the night away in the standard queen-sized bed with Serta® innerspring mattress or select the available queen-sized Vantage Point™ Sleep Number® bed by Select Comfort.® Using the digital hand control, you can quickly adjust each side of the mattress to your individual, ideal level of comfort and support by setting your Sleep Number — Your Key to a Perfect Night's Sleep.™

GO GOURMET. WHEREVER YOU GO.

The Adventurer's spacious galley will inspire your culinary desires.



BECOME YOUR OWN PERSONAL CHEF.

The Adventurer's stylish indirect lighting illuminates the galley, where solid-surface countertops, which include covers for the recessed sink, provide plenty of space to prepare your favorite dishes. A separate faucet with a water filtration system comes standard on all models.

The standard 30" microwave and the three-burner range give you the cooking flexibility you'd find in an upscale residential kitchen. A large four-door refrigerator/freezer with icemaker provides plenty of cold storage and is available on most models. A conveniently located pantry provides enough storage space to keep you well-stocked for lengthy trips, while the new full-extension drawer slides allow easy access to all your stored items.

The dining table provides elegant dining for two and expands easily to four place settings when guests drop by. The 33V, 35U and 37B also feature a

slideout lounge table that creates the perfect place to relax with a cup of coffee or a good book.

There's no better place to enjoy your latest culinary masterpiece than the BenchMark™ full comfort dinette (not available on the 38J and 38R). It features innerspring seat cushions and contemporary styling, while new taller seat backs offer added comfort and support. Flip up the seats to access the large storage spaces or fold down the table to quickly convert the dinette into a comfortable bed. For greater seating flexibility and safety while traveling, a child-seat tether anchor is located in the forward-facing dinette seat.

For an additional touch of elegance, choose the available Stainless Steel Package shown here, which includes a stainless steel refrigerator, range, microwave/convection oven and upgraded faucet with sprayer.

IT'S ALL ABOUT CHOICES.

A little something for everyone.



STYLISH CONVENIENCES.

Every 2006 Adventurer abounds with standard and available conveniences. In the bath, you'll appreciate standard features such as the residential-height toilet and the Moen® Posi-Temp® control, which maintains consistent shower temperature even if the water pressure fluctuates. A shower package with fold-down shower seat and handheld showerhead is available on all models.

When it's time to relax, the Adventurer gives you plenty of options. Unwind anywhere you like in the hoop-base lounge chair, which can be repositioned once you arrive at your destination. You can rock, recline and put your feet up on the footrest (shown here with available leather).

Or relax in the Rest Easy® multi-position lounge. It's a sofa! It's a recliner! It's a bed! It's all three! At the touch of a button, it goes from a sofa to a recliner with a pullout ottoman. Touch the

button again and it's a comfortable bed. Fabric covering is standard or you can upgrade to available leather. A dual recliner feature is also available. Selected models feature an available fold-down armrest with beverage holder.

You can also choose the optional Euro Chair. Another alternative: the J-Lounge, also available in leather, includes a power recliner with a drawer below. For additional sleeping space, the J-Lounge offers a large 70" x 48" bed (standard on the 38J and 38R).

The available built-in combination washer-dryer is 20 percent larger for 2006 and is now enclosed in a cabinet with solid-wood doors. It also features multiple wash, time and temperature cycles for a wide variety of fabrics (not available on the 33V and 35U).

INNOVATION DESIGNED WITH YOU IN MIND.

Inside and out, the Adventurer is filled with thoughtful touches to enhance your life on the road.



THE ADVENTURER PUTS MORE RECREATION INTO RVING.

Life on the road just got better, thanks to the Adventurer's long list of enhancements.

The OnePlace® systems center places important and frequently used switches, gauges, levels and controls in one convenient location so you can check them at a glance.

PowerLine®: This energy management system monitors on-board electrical usage and controls postponable power loads to minimize the nuisance of tripped campground circuit breakers.

TrueAir®: Control the interior climate with ease, thanks to our residential central air conditioning. At the heart of the system is a Coleman®-Mach® cooling unit, located below the floor, which provides a lower vehicle profile, reduces interior noise, enables easier servicing and eliminates roof runoff associated with roof AC condensation. TrueAir cools 40 percent faster and is 10 percent quieter than comparable roof air systems.

Pull out the standard passenger-side dash-mounted workstation and you'll find a handy place for using your laptop computer, writing letters or playing cards. There is also a convenient storage area underneath.



AN EXCEPTIONAL DASH.

Every part of the Adventurer's driver's area is designed around your needs. The controls are conveniently located and feature large, easy-to-read switches. The driver and passenger map lights and a center sunvisor come standard.

KeyOne™ System: The single key opens entrance doors and most exterior compartments and doors, so you don't have to keep track of a whole slew of keys.

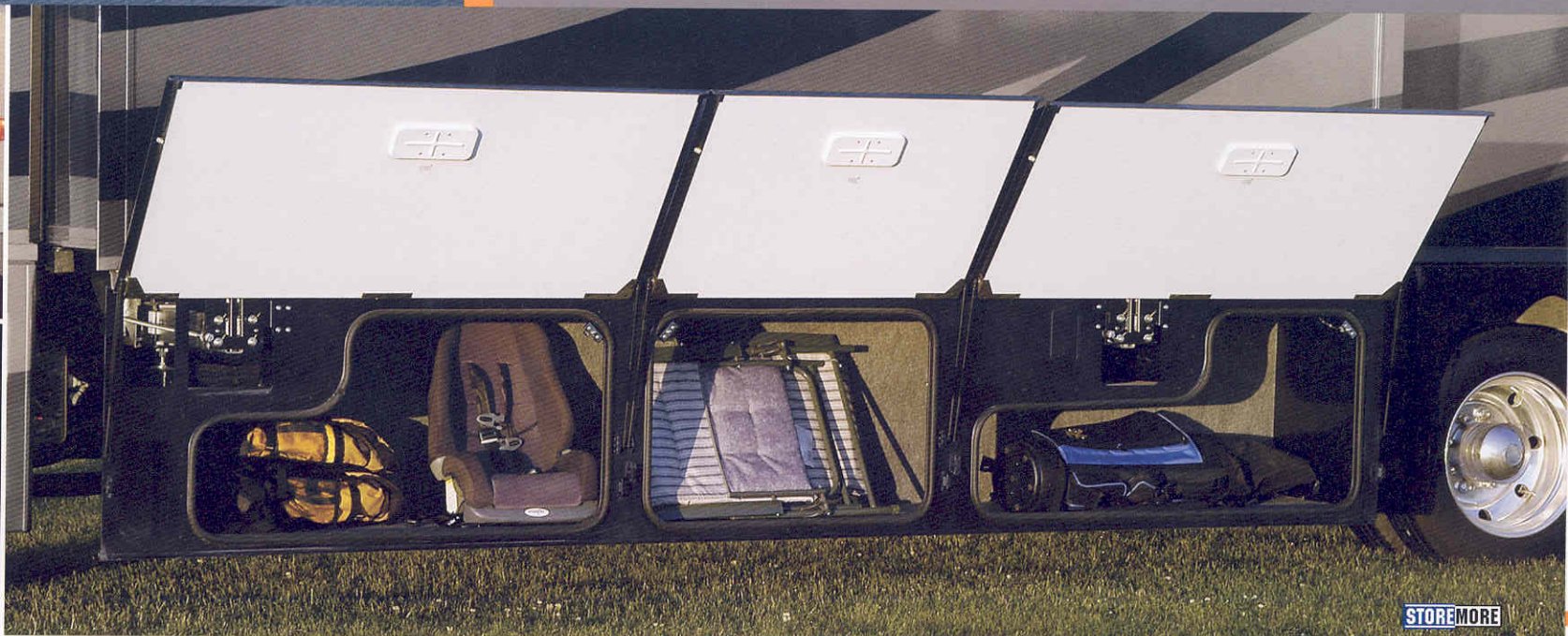
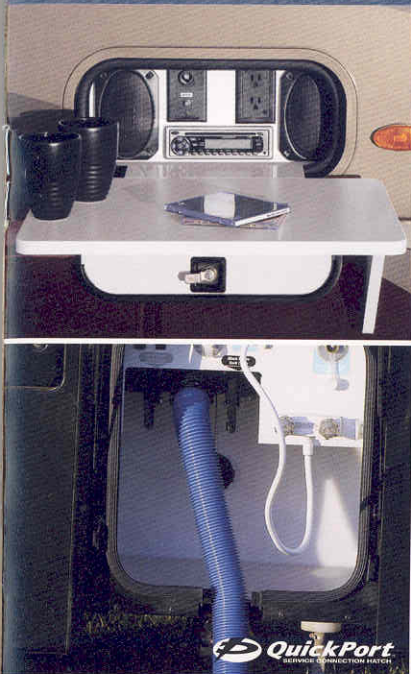
The dash-mounted compass also provides the exterior temperature at the touch of a button. For more precise navigation, choose the available Alpine® GPS system.

When you arrive, the available Sony rearview monitor system features one-way audio, which makes backing up a breeze. New for 2006, sideview cameras activate with the turn signal for added peace of mind when maneuvering.

Even the Sirius® Satellite ready RV Radio® has been updated, it includes an AM/FM stereo; CD player; weather band; and large, easy-to-use buttons and knobs. Enjoy more than 120 channels of crystal clear satellite radio programming when you choose the available Sirius Satellite Radio package with six-month prepaid subscription (not available in Canada).

THE GOOD LIFE CONTINUES OUTDOORS.

Well thought out from the inside out.



FEATURES YOU'LL APPRECIATE EVERY TIME YOU MAKE OR BREAK CAMP.

A Winnebago Industries original, StoreMore® is the industry's premium slideout system. StoreMore features large, well-lit exterior storage compartments designed to accommodate bulky and odd-shaped items. Automatic exterior compartment lights are door activated and a master light switch is located in the entrance area. Best of all, these compartments extend along with the slideroom for easy access without crawling under the slideroom. You'll also appreciate how easy it is to open the exterior compartment doors, thanks to single-paddle latches and gas struts.

Adventurer comes equipped with an exterior entertainment center that includes AM/FM stereo with an antenna, CD player with remote, 12-volt DC receptacle, TV jack, 110-volt outlet, speakers and a removable table. The compartment locks securely. A hookup for a portable satellite dish in the electrical service center is also included (satellite dish not included).

The exterior service center includes new user-friendly labels and features our QuickPort® service connection hatch. It allows you to close your service compartment door when connected to hookups at the campground. And you'll

never struggle with putting cords through small holes because the hatch is large enough to accommodate both hoses and power cords. The QuickConnect® coupling valve on the sewer hose makes for clean hookups and even has its own storage holster for added convenience.

TrueLevel™: Our innovative holding tank monitoring system incorporates Mirus* detector cells that sense tank levels from outside the tank. No more probes to clog or corrode, just accurate readings, time after time.

For communication in the campground or added peace of mind on day trips, the two-way radios have up to a five-mile range and recharge from the coach's house batteries at their built-in charging station.

The exterior mirrors feature turn signal indicators that are incorporated into the mirror heads as a courtesy to other drivers. Chrome mirror heads add to the exterior styling when you select a full-body paint package. They also incorporate a "breakaway" feature – they fold flat to give you added clearance when you store your Adventurer.

*Mirus is a trademark of Material Sciences Corporation.

EXTERIORS/INTERIORS

Attention to detail inside and out.

Standard Graphics



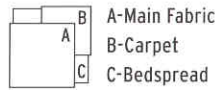
Bright Platinum Metallic



Spruce Green Metallic



We believe the same high standards we use for construction should apply to interior design. That's why we create efficient floorplans based on customer input, why we look for durable fabrics in pleasing colors, and why we handcraft our own cabinets using traditional panel-and-rail construction.



Lakeside

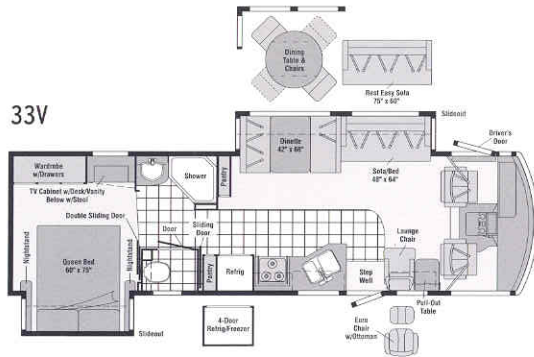


Prairie Fire

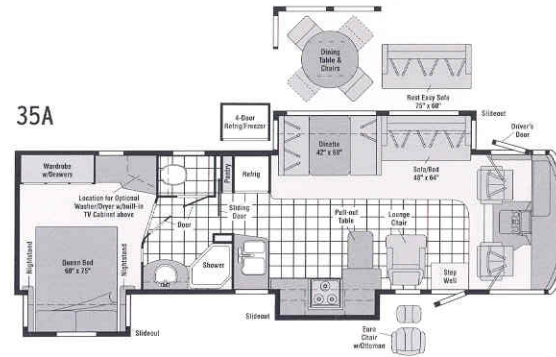


Terrace View

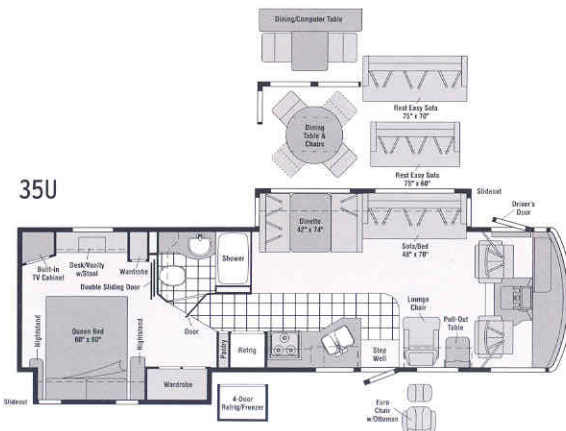
33V



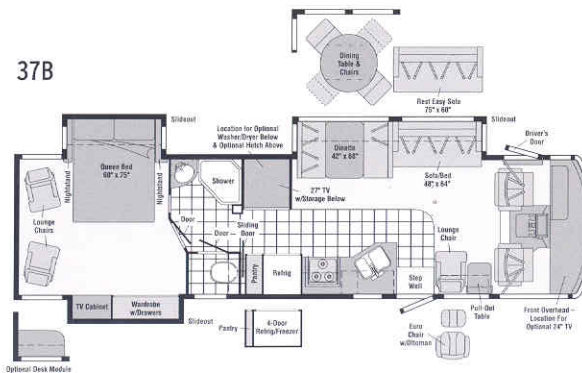
35A



35U



37B



FLOORPLANS

Select the floorplan that's perfect for you.

Full Body Paint



Ebony



Salsa



Concert Cherry



Portsmouth Oak



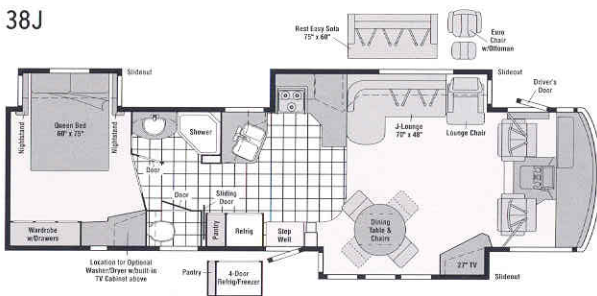
Sierra Maple



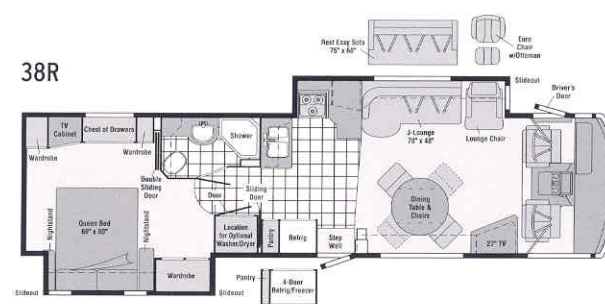
Washed Maple

Our drive to improve the Adventurer — and your motor home experience — isn't limited to the interior. A patio awning comes standard, while the available awning sunscreen provides added protection for the patio area. And the new main entrance door holder will stay open in winds up to 20 miles per hour.

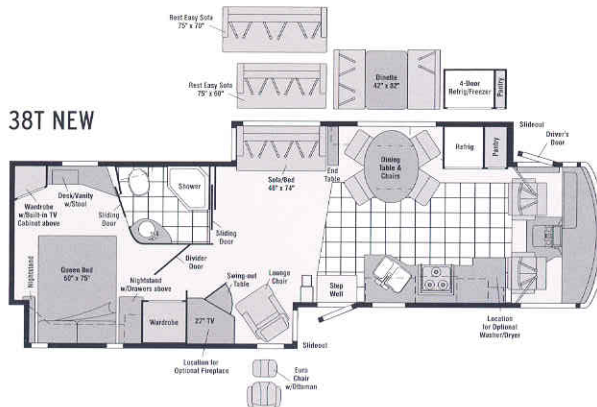
38J



38R



38T NEW



Vinyl Tile Floorcovering



Seat Belts

Note: Dimensions shown are for sleeping space only and may vary due to styling differences.

2006 ADVENTURER SPECIFICATIONS

No detail is too small.

	33V	35A	35U	37B	38J	38R	38T NEW
Length	33'8"	35'11"	35'8"	38'11"	38'10"	38'11"	38'11"
Exterior Height^a	12'2"	12'2"	12'2"	12'1"	12'0"	12'0"	12'1"
Exterior Width^b	8'6"	8'6"	8'6"	8'6"	8'6"	8'6"	8'6"
Exterior Storage^c (cu. ft.)	68.2	90.0	91.0	107.4	106.9	120.0	109.3
Interior Height	7'2"	7'2"	7'2"	7'2"	7'2"	7'2"	7'2"
Interior Width	8'1"	8'1"	8'1"	8'1"	8'1"	8'1"	8'1"
Freshwater Capacity w/Heater^d (gal.)	86	88	86	88	88	88	108
Holding Tank Capacity - Black/Gray^d (gal.)	55 / 43	50 / 75	45 / 49	50 / 58	51 / 53	45 / 49	53 / 70
LP Capacity^e (gal.)	28	28	28	28	28	28	28
Fuel Capacity (gal.)	75	75	75	75	75	75	75
GCWR^f (lbs.)	26,000 [■] / 26,000 [□]	26,000 [■] / 26,000 [□] / 30,000 [●]	26,000 [■] / 26,000 [□]	30,000 [●]	30,000 [●]	30,000 [●]	30,000 [●]
GVWR (lbs.)	22,000 [■] / 22,000 [□]	22,000 [■] / 22,000 [□] / 24,000 [●]	22,000 [■] / 22,000 [□]	24,000 [●]	24,000 [●]	24,000 [●]	24,000 [●]
GAWR - Front (lbs.)	7,500 [■] / 8,500 [□]	7,500 [■] / 8,500 [□] / 9,000 [●]	7,500 [■] / 8,500 [□]	9,000 [●]	9,000 [●]	9,000 [●]	9,000 [●]
GAWR - Rear (lbs.)	14,500 [■] / 15,000 [□]	14,500 [■] / 15,000 [□] / 15,500 [●]	14,500 [■] / 15,000 [□]	15,500 [●]	15,500 [●]	15,500 [●]	15,500 [●]
Wheelbase	208"	228"	228"	248"	248"	248"	266"

■ = Chassis A □ = Chassis B ● = Chassis C

Standard - S Optional - O

AUTOMOTIVE/CHASSIS

	33V	35A	35U	37B	38J	38R	38T
Chassis A - Ford® 6.8L Super-Duty V10 SOHC Triton® engine, 362-hp, Torqshift™, 5-speed overdrive transmission, 130-amp. alternator, 4-wheel ABS, Tires 22.5", Wheels stylized aluminum	0	0	0				
Chassis B - Workhorse® 8.1L Vortec™ V8, 340-hp, Allison® 1000 electronic overdrive transmission, 145-amp. alternator, 4-wheel ABS, Tires 22.5", Wheel Liners stainless steel	S	S	S				
Chassis C - Workhorse 8.1L Vortec V8, 340-hp, Allison 2100 electronic overdrive transmission, 145-amp. alternator, 4-wheel ABS, Tires 22.5", Wheel Liners MH stainless steel		0		S	S	S	S
Leveling Jacks HWH® hydraulic, manual touch pad w/chime, Tire Tools wrench, leverage bar, Trailer Hitch 5,000-lb. drawbar/500-lbs. maximum vertical tongue weight & 7-pin wiring connector	S	S	S	S	S	S	S
Leveling Jacks HWH hydraulic, automatic controls, Wheels stylized aluminum (Workhorse chassis)	0	0	0	0	0	0	0

CAB AREA & DRIVER CONVENIENCES

	33V	35A	35U	37B	38J	38R	38T
Cab Seats (fabric), multiposition armrests, headrest, manually adj. lumbar support, multiadj. swivel/slide/recline, Cab Sound Control Package , Cigarette Lighter/12-volt DC Powerpoint , Compass electronic w/outdoor thermometer, Convenience Tray , Cruise Control , Door driver w/power window, assist bar, KeyOne System (common key w/entrance door & exterior storage compartments), trim panel w/beverage holder, storage pocket, switch appliqué, power mirror controls, Courtesy Light , Floor Mats carpet driver & passenger, Instrument Panel appliqué, Map Lights , Shades light-filtering, cab windows & front wraparound, Trim Panel passenger side w/beverage holder, storage, 12-volt DC powerpoint, Steering Wheel tilt w/power-assist, Sunvisors , Window (passenger) full-slider w/screen, dual-glazed/thermo-insulated, Windshield Wipers intermittent, Workstation in-dash	S	S	S	S	S	S	S
Cab Seats (leather w/vinyl surround) manual adj. lumbar support, Cab Seat Pedestal 6-way power-assist (driver), Cab Seat Pedestal 6-way power-assist (driver & passenger), Defroster Fans (2) aux. 2-speed w/instrument panel switch, GPS Navigation System Alpine® Monitor System color rearview w/single camera & one-way audio, Sony, Sunvisors (2) powered, switch, Video Camera System two side-mounted cameras	0	0	0	0	0	0	0

ENTERTAINMENT

	33V	35A	35U	37B	38J	38R	38T
CB Prep antenna, antenna lead, 12-volt DC powerpoint, Entertainment Center w/CD Player (exterior) DC receptacle, AC duplex receptacle, AM/FM radio, exterior antenna jack, TV jack, radio antenna, speakers (2), lockable compartment, removable table, Home Theater Sound System amplifier, DVD/VCR, receiver, speakers (5), subwoofer, Sony, RV Radio (cab) AM/FM/stereo/CD player w/weather band, remotes, roof-mounted flexible rubber antenna, speakers (4), satellite radio ready, Radio Power Switch main/aux. battery, Satellite System Ready , Telephone input & interior jacks, TV Enhancement Package antenna (amplified), interior jacks, coax wiring, cable input, antenna check reminder light, Video Selection System	S	S	S	S	S	S	S
CB Cobra® Compact Multidisc Changer , Radio Satellite Sirius, (N/A in Canada, includes six-month subscription), Radios (4) 2-way docking port w/charger, Satellite Dish Antenna RV digital, elevation sensing unit, manual, Satellite Dish Antenna RV digital, in-motion, King-Dome® Stereo System (rear) AM/FM/CD player, alarm clock	0	0	0	0	0	0	0

	33V	35A	35U	37B	38J	38R	38T
Entertainment Center TV 27" flat-face, stereo color AC w/remote, Sony				S	S	S	S
TV 20" flat-face, color AC w/remote, remote extenders, bedroom, Sony	S	S	S		S	S	S
TV 24" flat-face, color AC w/remote, remote extenders, bedroom, Sony				S			
TV 27" flat-face, stereo color AC w/remote, Sony (front overhead)	S	S	S	0			
TV 27" flat-face, stereo color AC w/remote, Sony & hutch cabinet				0			

INTERIOR

	33V	35A	35U	37B	38J	38R	38T
Ceiling vinyl, Clock , Lights ceiling, incandescent, bath, bedroom w/wall switches, Light decorative oval, Lights fluorescent, recessed, galley, lounge w/wall switches, Lights reading, Mini Blinds galley & bath, Shades day/night pleated, lounge, dinette, bedroom, Windows flush-mounted, dual-glazed/thermo-insulated	S	S	S	S	S	S	S
Cupholder(s)					S	S	
Fireplace electric							0
Light halogen (lounge)							S
Light wall lamp (lounge)			S				S
Mirror	S		S				
Picture framed		S			S	S	S

CABINETY

	33V	35A	35U	37B	38J	38R	38T
Portsmouth Oak or Concert Cherry or Washed Maple or Sierra Maple stile-and-rail construction w/raised-panel inserts on upper doors	0	0	0	0	0	0	0

FLOORCOVERING

	33V	35A	35U	37B	38J	38R	38T
Carpeting w/pad, Vinyl Tile bath, galley	S	S	S	S	S	S	S

FURNITURE

	33V	35A	35U	37B	38J	38R	38T
Dining Table & Chairs (2) freestanding, (2) folding	0	0	0	0	S	S	S
BenchMark full comfort dinette, access to storage below, child-seat tether anchor	S	S	S	S			0
Lounge Chair (fabric) hoop-base, cabinet w/pullout table, recliner, rocker, footrest	S		S	S			
Lounge Chair (leather) hoop-base, Rest Easy multi-position lounge (fabric or leather) dual-control 75" x 60", Lounge Chair (leather) Euro recliner w/ottoman	0	0	0	0	0	0	0
Lounge Chair (fabric) hoop-base, recliner, rocker, footrest		S			S	S	S
Multifunction Table & Chairs (2) freestanding, (2) folding			0				
Rest Easy multi-position lounge (fabric), throw pillows & fold-down armrest w/beverage holder 75" x 60"	0	0		0	0	0	
Rest Easy multi-position lounge (fabric), power recliners, dual-trundle 75" x 70"			0				0

2006 ADVENTURER SPECIFICATIONS

Standard - S	Optional - O	33V	35A	35U	37B	38J	38R	38T
Rest Easy multi-position lounge (leather), w/beverage holder		O	O	O	O	O	O	O
Sofa (fabric) removable armrests (2), footrests (2), throw pillows (2)		S	S	S	S			S
Sofa (fabric) J-Lounge, power recliner, drawer below						S	S	
Sofa (leather) J-Lounge, power recliner, drawer below						O	O	

GALLEY								
Countertops solid-surface w/backsplash, Cutting Board slide out, Faucet single-control, Light fluorescent, under cabinet, Lights indirect, Microwave Oven w/vented range fan, touch control, Pantry, Range Top 3-burner w/storage below, sealed burners, Amana®, Range Cover, Refrigerator/Freezer large double-door, Norcold®, Sink double-bowl molded w/sink covers (countertop material), Wastepaper Basket, Water Purification System w/separate faucet		S	S	S	S	S	S	S
Apothecary Drawers, Appliance Storage Cabinet, Decorative Storage Cabinet, Pullout table			S					
Countertop Flip-Up Extension(s)		S	S	S	S	S	S	
Magazine Rack						S	S	
Appliance Package stainless steel, Microwave/Convection Oven w/vented range fan, touch control, stainless steel, Sharp® Range 3-burner w/large oven, recessed, sealed burners, one w/high-output, Amana, Refrigerator/Freezer large double-door w/ice maker, 4-door w/ice maker, Norcold		O	O	O	O	O	O	O
Utility Tray tip-out			S			S	S	
Wall Border		S		S	S	S	S	

BATH								
Cabinet lavatory, Cabinet medicine, Countertops solid-surface w/back splash (N/A 38T), Faucet (Lavatory) single-control, Faucet (Shower) single-control, fixed showerhead w/Moen Posi-Temp, Hair Dryer wall-mounted w/night-light, Light shower, Lights makeup, Shower w/wall surround, Shower Door textured glass, Sink oval, Toilet (Porcelain) w/foot-pedal flush		S	S	S	S	S	S	S
Cabinet linen				S		S	S	
Magazine Rack, Mirror				S		S		
Robe Hook			S			S	S	
Removable Clothes Rod			S					
Shower Package handheld showerhead, fold-down shower seat		O	O	O	O	O	O	O
Towel Rack 3-rod, mounted to door		S	S	S	S	S	S	

BEDROOM								
Bed queen, innerspring mattress w/underbed storage, Bedsprad, Lights decorative wall lamps, Mirror back wall, Nightstands (2), Pillows, Powerpoint 12-volt DC receptacle(s), Throw Pillow, Wardrobe Cabinet cedar lined, carpeted floor, clothes rod, drawers (N/A 35U, 38R), light		S	S	S	S	S	S	S
Chest of Drawers							S	
Desk w/folding chair					O			
Hamper			S	S		S	S	S
Light halogen vanity								S
Lounge Chairs (2) w/storage ottomans, Flexsteel®				S				
Sleep Number Bed queen by Select Comfort, remote holders		O	O	O	O	O	O	O
Vanity Cabinet w/fold-up countertop, stool		S		S				S
Wall Border		S	S	S		S	S	S

EXTERIOR								
Awning Rails rain gutters, Entrance Door w/separate screen door, deadbolt lock, Door fuel-fill, Entrance Door Steps triple electric w/doorjamb switch		S	S	S	S	S	S	S
Exterior Graphics Packages Spruce Green Metallic or Bright Platinum Metallic, Ladder, Lights fog lamps, Light porch, Light driver side service, Mirrors electric, remote w/defrost, Mudflaps front & rear, Receptacle AC duplex, Sidewall Skin one-piece smooth fiberglass, high-gloss, Storage Compartments smooth valance panels, trunk liner, gas struts, TriMark® KeyOne System, paddle latch, lights, interior master light shut off switch		S	S	S	S	S	S	S

a The height of each model is measured to the top of the tallest standard feature and is based on the curb weight of a typically equipped unit. The actual height of your vehicle may vary by several inches depending on chassis or equipment variations. Please contact your dealer for further information.
 b Adventurer floorplans feature a wide-body design — over 96" in making your purchase decision, you should be aware that some states restrict access on some or all state roads to 96" in body width. Before making your purchase decision, you should confirm the road usage laws in the states of interest to you.
 c The load capacity of your motor home is designated by weight, not by volume, so you cannot necessarily use all available space when loading your motor home.
 d Capacities are based on measurements prior to tank installation. Slight capacity variations can result due to installation applications.
 e Capacities shown are tank manufacturer's listed water capacity (W.C.). Actual filled LP capacity is 80% of listing due to overfilling prevention device on tank.

	33V	35A	35U	37B	38J	38R	38T
Awning patio	S		S	S		S	S
Awning patio, electric w/wind sensor, remote	O	S	O	O	S	O	O
Front Protective Mask w/full-body paint, Full-Body Paint Ebony or Salsa (w/protective film below entry door), Undercoating (Workhorse only), Sunscreen patio (requires electric awning package)	O	O	O	O	O	O	O

SYSTEMS								
Automotive Heater/AC, Aux. Start Circuit, Batteries (2) (coach) Group 24 deep-cycle, w/disconnect system, Battery Charge Control automatic dual, Converter/Charger 55-amp. electronic, Drain 1" water tank, Electrical Distribution System AC & DC breaker panels, Generator 5,500-watt, Onan® Marquis Gold™ gas, Generator/Shoreline Automatic Changeover Switch, Home Comfort Plus Package central air heat pump, aux. automotive heater, insulated powered ventilator fans (bath & galley), OnePlace systems center, wall-mounted, battery digital voltmeter, energy management display, generator hourmeter gauge, generator start/stop switch, holding tank levels, LP tank level, solar panel/battery charger light, water heater switch & lights, water pump switch & light, water tank level, courtesy ceiling light, Power Cord 30-amp., PowerLine energy management system, Service Compartment (drainage/water) city water hookup/tank diverter fill, drainage valves, exterior wash station w/pump switch, 10' sewer hose, QuickConnect® coupling valve, QuickPort service connection hatch, Service Center (electrical) cable input, power cord, QuickPort service connection hatch, telephone input, portable satellite dish hookup, Solar Panel 10-watt battery charger, Tank flushing system, black tank only, Tank holding, heated compartment, Tank LP , permanent mount w/gauge, TrueAir central air conditioning system, TrueLevel holding tank monitoring system, Water Heater 10-gallon electronic ignition, 120 VAC/LP gas w/motoraid, Water System Winterization Package water heater bypass valve & siphon tube, Water Pump demand, permanent magnet motor w/diaphragm, Water Tank Fill gravity w/locking door (NA 38J), Water Tank Fill pressurized city hookup w/diverter valve		S	S	S	S	S	S	S
Furnace 35,000 BTU		S						
Furnace 40,000 BTU			S	S	S	S	S	S
Generator 7,000-watt, Onan Marquis Gold, gas, Inverter DC/AC, 600-watt, Power Cord 50-amp., flexible cord		O	O	O	O	O	O	O
Washer-Dryer Combination			O		O	O	O	O
Washer-Dryer Prep			S		S	S	S	S

SLIDEOUTS								
Slideout Room (bed 33V, 35A, 37B, 38J; bed/wardrobe 35U, 38R; wardrobe 37B) w/slidoor cover		S	S	S	S	S	S	
Slideout Room (bed/wardrobe/entertainment center/lounge) w/slidoor cover								S
Slideout Room (sofa/dining) w/slidoor cover, StoreMore		S	S	S	S			
Slideout Room (lounge/galley) w/slidoor cover, StoreMore						S	S	
Slideout Room (TV/dining) w/slidoor cover, StoreMore							S	
Slideout Room (galley) w/slidoor cover			S					
Slideout Room (sofa/dining/refrig) w/slidoor cover, StoreMore								S

SAFETY								
Assist Bar interior, Assist Handle exterior, acrylic, Bumpers front & rear, Detectors/Alarms LP leak, smoke, carbon monoxide, Fire Extinguisher 10 BC, Ground Fault Interrupter, Lights high-mount brakelamp, Light courtesy w/wall switch, Lights daytime running lamps, Seatbelts cab 3-point adj., Window escape, Windshield laminated safety glass		S	S	S	S	S	S	S
Child-Seat Tether Anchor		S	S	S	S			S

WARRANTY ⁹								
12-month/15,000-mile basic limited warranty^h 36-month/36,000-mile warranty on structure ^h		S	S	S	S	S	S	S
10-year limited parts & labor warranty on roof skin^h								

f Actual towing capacity is dependent on your particular loading and towing circumstances which includes the GVWR, GAWR, and GCWR as well as adequate trailer brakes. Please refer to the Operator's Manual of your vehicle for further towing information.
 g See separate chassis warranty details provided in Owner's Manual.
 h See your dealer for complete warranty information.
 Not all items available in combination. See dealer for details.
 Winnebago Industries® continuing program of product improvement makes specifications, equipment, model availability, and prices subject to change without notice. Comparisons to other motor homes are based on the most recent information available.

NOT ALL MOTOR HOMES ARE CREATED EQUAL. As you take a closer look, you'll see that there is much more to the Winnebago Adventurer than a long list of standard features and compelling floorplans. Beneath it all you'll find a SuperStructure® foundation of strength and durability, and Winnebago Industries' recognized service and warranty support.



We are committed to service. We back our motor homes with the best after-the-sale service in the industry. This includes a 12-month/15,000-mile basic limited warranty; 36-month/36,000-mile warranty on structure; standard 10-year limited parts-and-labor roof skin warranty; and complimentary 24-hour Roadside Assistance Program. TripSaver Fast Track Parts guarantees that in-stock warranty parts ship directly to your dealer within 24 hours. Winnebago Industries has a nationwide dealer service network.



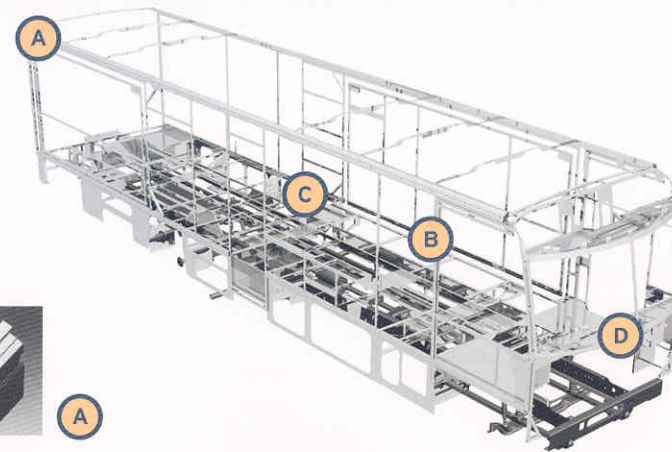
Certified quality. Recreation Vehicle Dealer Association members annually rate RV manufacturers on the quality of their products, and on their sales and service support. Winnebago Industries has achieved the coveted Quality Circle Award every year since its inception, the only RV manufacturer to do so.



Warning: Joining WIT has been known to cause excessive fun. Winnebago-Itasca Travelers (WIT) is a club for owners of Winnebago Industries motor homes. WIT is a great way to meet people and offers you caravans and rallies, local and state group activities, and other benefits for RVers.



A



SUPERSTRUCTURE is the term given to Winnebago Industries' structural motor home design and construction. Rather than a single component, it is the culmination of design integration that incorporates steel and aluminum substructures; composite-design laminated floor risers; interlocking joint technology; and Thermo-Panel® floor, roof and sidewalls to form a high-strength, durable vehicle body.

Thermo-Panel manufacturing combines a durable exterior panel with welded aluminum support substructures. The substructures are embedded in a high-density, block-foam insulation core to create a strong, durable, yet lightweight sidewall. Just another Winnebago Industries invention.

- A Interlocking joint construction utilizes advanced extruded aluminum structural components to create integrated floor-to-sidewall and sidewall-to-roof joints. This design effectively distributes the weight of the walls and roof, making a stronger and more durable body than competitor designs that rely on screws to carry the weight.
- B The foundation substructure assembly is precision-aligned to maximize strength and cross-coach support as well as durability.
- C Laminated risers feature a welded aluminum core for improved strength and provide a stable base for the floor structure and storage compartments.
- D Critical steel components are treated using an advanced electrodeposition coating process that provides superior corrosion protection.

One-year-old Winnebago Industries' fiberglass roof



One-year-old competitor's rubber roof



BUILT TO A HIGHER STANDARD.

The Adventurer features a crowned, one-piece fiberglass roof skin backed with a 10-year limited parts-and-labor roof skin warranty. Fiberglass offers superior strength, attractiveness and durability compared to rubber roofs found on many competitive models. Over time, rubber roofs are susceptible to chalking, streaking and degradation, and have less puncture and tear resistance than fiberglass.



Seat belts are your most important hookup. Always buckle up.

NYSE listing: WGO

Visit www.winnebagoind.com for virtual product tours and the latest product updates.