

It's not just about the miles.
It's about the memories.



2007
DISCOVERY
CLASS A DIESEL



Full-Wall Slide | 330 HP Diesel Engine | New Graphics | Numerous Standard Features | Exterior Pull-Out Grill & Kitchenette



PLACES TO GO, PEOPLE TO SEE.

Discovery owners like to get the most out of life... traveling, pursuing their passions and laughing with new and old buddies. So we've designed Discovery to suit your lifestyle. For example, you can fit more friends in the 39V model with a full-wall slide that gives you an incredible 380 square feet inside. The more the merrier!

OVERHEAD STORAGE gives you abundant room so you can bring much more than just the essentials. While airlines may limit you to two bags, you can pack as much as you want in your Discovery! And it's stored neatly behind handsome cabinetry, up and out of the way.

 DISCOVERY





DISCOVERY 39S SHOWN IN CAFÉ MILAN INTERIOR DÉCOR WITH WINDSOR BIRCH WOOD FINISH.



THE ENTERTAINMENT CENTER is like having a private movie theater, ready for showtime anytime. It includes a 26" LCD TV and a DVD home theater sound system with hidden surround sound speakers. All housed in a sleek cabinet for your viewing pleasure (Most Models.)



SOCIAL LIFE INCLUDED, STANDARD.

It's hard not to make new friends when you've got such a great space for entertaining. Like a deluxe galley with roll-out countertops to provide more room for party trays when you need it (39L model). It's fully equipped for fun.



THE 4-DOOR REFRIGERATOR from Norcold® offers a whopping 12 cubic feet for food, so go ahead and buy that extra-large watermelon for the family reunion. The built-in icemaker and water dispenser come in handy on a hot day.



THE DINETTE is the place to enjoy that first cup of morning coffee. Later in the day, it's great for a game of cards for four. And if more want to join in, select models have room for six at the pull-out dinette table.

GALLEY TILT DRAWER squeezes even more storage into unused space in the 39S model. It's the perfect spot for everyday items like trash bags or aluminum foil.





THE GALLEY is so spacious and attractive, you'll think you're at home. You'll find a convection microwave oven, and a 3-burner recessed cooktop that comes with a solid surface cover.



GALLEY TILT DRAWER squeezes even more storage into unused space in the 39S model. It's the perfect spot for everyday items like trash bags or aluminum foil.



THE SOFA SLEEPER (OPTIONAL) converts into a queen-size bed with room for two adults or a few grandchildren and their teddy bears. The comfy air mattress comes with an electric pump so it inflates easily. In the morning, just fold it up with the linens tucked neatly inside for another night.

YOU DESERVE A LITTLE LUXURY. OR IN THIS CASE, A LOT.

The bedroom suite is your place to rest and recharge. You'll be surrounded by numerous standard features that deliver more comfort and luxury. Just remember to turn off the generator from your bedside remote switch before you slip into dreamland.



THE 20" LCD TV is complemented by a DVD home theater system with 5.1 Dolby® surround sound speakers. Because watching TV from bed is an indisputable right.



THE BEDROOM features a comfy queen-size Restonic® innerspring mattress under the decorator bedspread.



THE BATHROOM features a glass-enclosed shower, roomy cabinetry and a well-lit mirror. Everything you need to look your best.



THE WARDROBE lets your clothes travel first-class, organized with racks and wire shelving. The cedar lining keeps moths away, and interior lighting helps you choose your outfit.



THE BEDROOM VANITY with a second sink (standard on 39S model) lets you both get ready for a big night out at the same time. It provides another area to shave or wash up.



THE WASHER/DRYER COMBO (optional) spins your clothes clean, even while rolling down the highway. And your private laundromat is hidden away behind louvered wooden doors.

PUT THE PEDAL TO THE LUXURIOUSLY CARPETED FLOORING.

Driving the Discovery is a treat in itself, surrounded by a cockpit full of high-tech wizardry with every convenience close at hand.

THE RADIO/BACK-UP MONITOR PANEL is a dual-purpose unit. It includes an AM/FM radio with a CD player, and a color monitor. An adjustable rear camera allows you to view the hitch and check the towed vehicle, then pan out to view a long distance behind the towed vehicle. On top of that, it's GPS ready.



KEYLESS REMOTE ENTRY lets you lock or unlock your Discovery with the push of a button. No more fumbling around with keys!



THE PASSENGER SEAT is covered in beautiful, easy-to-clean Ultraleather™ for mile after mile of comfort. An electric foot rest and power adjustments are available, allowing you to customize the seat in the best position for you.

CENTRAL MONITOR PANEL lets you monitor your Discovery's systems at a glance. And the pressure-sensitive sensors provide an accurate reading of tank levels.





THE DRIVER'S AREA features a stylish wrap-around dash and a steering wheel that tilts and telescopes to suit your frame. Pilot your Discovery with the help of easy-to-read gauges and easy-to-reach controls.



THE FRONT CAP gives the Discovery a nice profile, accented by cool chrome mirrors (optional).



THE REAR CAP provides an attractive rear view, and the high-mounted taillights are easy to see over a towed vehicle.

GO PLAY OUTSIDE WITH YOUR FRIENDS.

Mom was right... the outdoors can be great fun with your buddies, especially with cool toys like an exterior entertainment center or a deluxe pull-out grill with kitchenette.

You'll be the hit of the RV resort.



330 HORSEPOWER CATERPILLAR® C7 DIESEL ENGINE provides plenty of muscle for driving and towing. The powerful motor makes a big difference in the driving experience.



EXTERIOR ENTERTAINMENT CENTER (AVAILABLE) allows you to watch your golf show and practice your swing at the same time. It features a 20" flat screen TV on a pull-out shelf, and an AM/FM radio with CD/DVD player.

ELECTRIC PATIO AND ENTRY DOOR AWNINGS

create an instant front porch. The patio awning includes a wind sensor to automatically retract if a strong breeze kicks up.

DUAL AIR CONDITIONING UNITS

provide maximum cooling and plenty of storage, because the units are mounted on the roof instead of in the basement.

FULL-BODY PAINT is applied using a two-stage DuPont® paint process for durability and good looks.



4-POINT LEVELING SYSTEM levels your Discovery with a one-button push, or a do-it-yourself manual override.



DISCOVERY



THE UTILITY COMPARTMENT lets you empty the holding tanks from one central place. The water sprayer comes in handy when it's Sparky's turn for a bath.



THE SPOT LIGHT (OPTIONAL) makes it more fun to stay out after dark. It swivels 180 degrees to illuminate what the moonlight can't. It even comes with a remote control.



EXTERIOR PULL-OUT GRILL AND KITCHENETTE (OPTIONAL) turns your Discovery into Barbecue Party Central. If you grill it, they will come. Includes a propane grill, refrigerator, sink with hot and cold running water, and a pump for waste water.



STORAGE COMPARTMENTS line both sides of the coach to provide lots of room for equipment.

Discovery shown in Stone.

HIGH MOUNTED TAILLIGHTS are easy to see, even when you're towing a vehicle behind you.

SMART DOOR STRUTS allow the compartment doors to open in two stages to allow room for the slide-out.

WE'RE DOING OUR PART TO KEEP AMERICA BEAUTIFUL.

The handsome exterior graphics have been newly redesigned for 2007. So they'll look great whether you're speeding down the freeway or docked next to a lake. We carefully apply DuPont® paint using a two-stage process. This full-body paint ensures only the best in quality and appearance.

DISCOVERY EXTERIORS

PACIFIC BLUE



IRON

STONE



INTERIOR WOOD FINISHES



Plantation Cherry



Summit Ash



Windsor Birch

BLUE TOPAZ

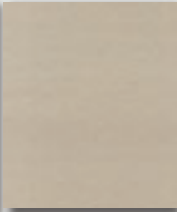
LIVING/DINING ROOM



Sofa (varies by model) & Dinette Cushions

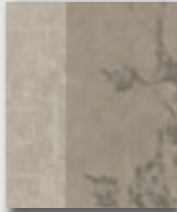


Sofa (varies by model) & Recliner

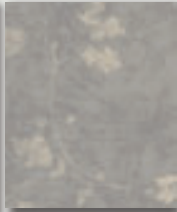


Sofa (optional), Recliner (optional), Driver & Front Passenger Seats

BEDROOM



Bedsread



Pillow Shams



Throw Pillows

SATIN STEEL

LIVING/DINING ROOM



Dinette Cushions



Sofa

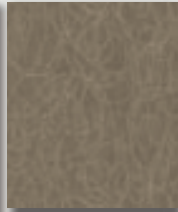


Sofa (optional), Recliner (optional), Driver & Front Passenger Seats

BEDROOM



Bedsread



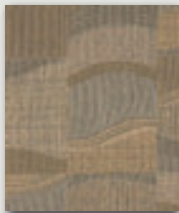
Pillow Shams



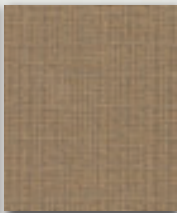
Throw Pillows

CAFE MILAN

LIVING/DINING ROOM



Sofa (varies by model)



Recliners & Dinette Cushions

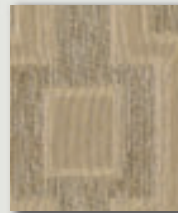


Sofa (varies by model)

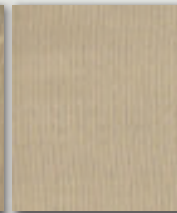


Sofa (optional), Recliner (optional), Driver & Front Passenger Seats

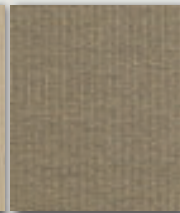
BEDROOM



Bedsread



Throw Pillows



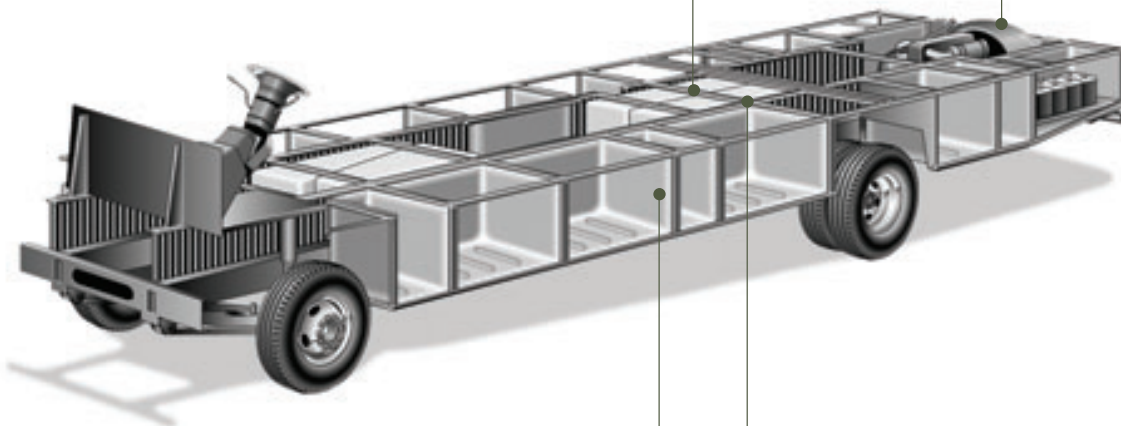
Pillow Shams

THE POWER PLATFORM. BECAUSE YOU HAVE A LOT RIDING ON THIS.

Fleetwood's patented Power Platform begins with two 10-inch steel I-beams welded to the chassis, with steel outriggers. Together, they create a basement for the fluid tanks and storage, while supporting the floor, walls and roof with a rigid metal frame. This complements the chassis to make it even stronger.

HOLDING TANKS are enclosed between the upper and lower basement floors so they can be heated in cold weather to help prevent freezing.

LARGE TOWING CAPACITY[†] lets you tow most vehicles with ease.



BASEMENT STORAGE features aluminum doors, constructed with roto-cast so you can hose the compartments out. They are also individually lit for after sunset.

VEHICLE STABILITY is enhanced because the holding tanks are positioned in the bottom center of the platform.

[†] The chassis manufacturer recommends the installation of a supplemental brake control system to activate the brakes on the vehicle or trailer you are towing. Hitch receiver ratings expressed are maximum for the hitch receiver installed and may require the purchase of additional equipment that is dependent on the weight of the towed load. Consult with hitch receiver manufacturer for further information.

Drawings are for illustrative purposes only to highlight aspects of motor home construction. Actual motor home design depends on model and is subject to change.

WHY FLEETWOOD?



Passion

We're truly passionate about the RV lifestyle. Fleetwood was founded by RV enthusiasts, and that tradition continues today.



Quality

There's no cutting corners. Skilled craftsmen build every Fleetwood RV for maximum durability and longevity.



Service

Help is nearby. When you need an upgrade or repair, you'll find facilities all across North America and more than 1,100 dealers ready to assist you.



Warranty

Breathe easier with RV Ownercare, one of the best warranties in the industry. See your Fleetwood dealer for details.



Trust

More people trust Fleetwood. After all, we've spent over 50 years perfecting RVs, earning the loyalty of generations of RVers.



INTERLOCKING CEILING-TO-SIDEWALL CONNECTION helps keep the box square. This assures a proper cabinet fit.



INTERLOCKING FLOOR-TO-SIDEWALL CONNECTION locks tightly to keep out water, dust, and noise, and helps eliminate squeaks and rattling.



VACU-BOND® SIDEWALL CONSTRUCTION creates a strong, weather-resistant structure. All sidewalls, floors and ceilings are Vacu-bonded to a durable aluminum or steel frame.

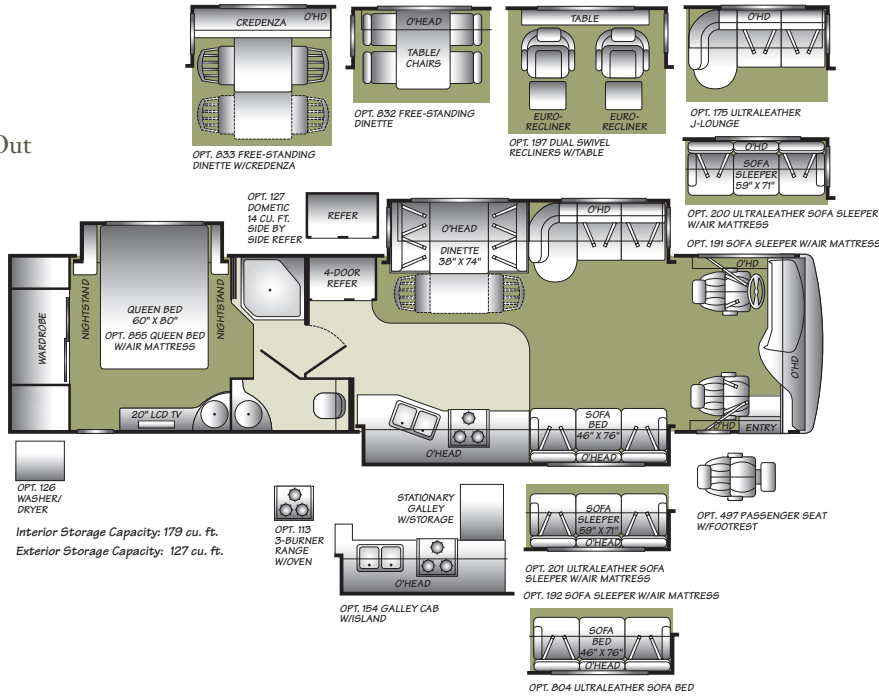


PULL-OUT BASKETS keep your smaller items together so they don't get scattered. Store your golf balls here after a day on the links.

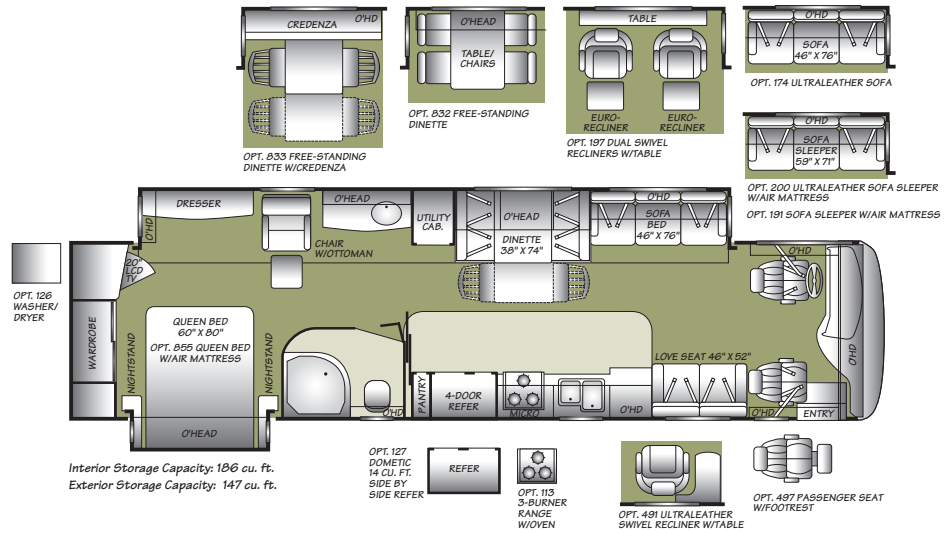


THE EZ STORE COMPARTMENT is the perfect place to stow your golf clubs and other equipment. The compartment moves with the slide-out so you don't have to stoop to get your gear.

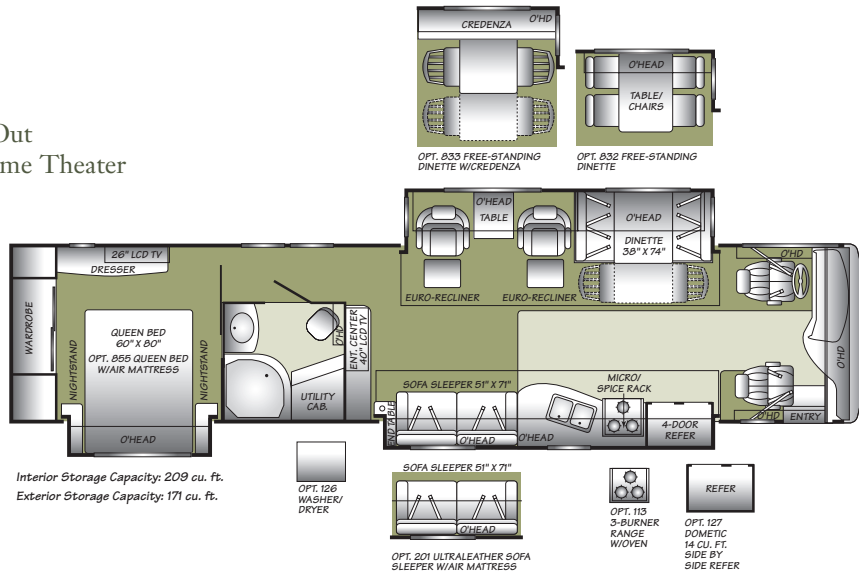
39S Triple Slide-Out



39V Features a Full-Wall Slide



40X Triple Slide-Out Mid-Ship Home Theater



Standard Features & Options

INTERIOR

INTERIOR – THROUGHOUT

- 10 Gallon Quick Recovery Water Heater w/Direct Spark Ignition (Gas/Electric) S
- 20,000/25,000 BTU Dual Furnaces S
- 20,000/30,000 BTU Dual Furnaces (39V) S
- **84" Interior Ceiling Height** S
- Crown Molding S
- **Deluxe Roller Bearing, Full Extension Drawer Guides & Transit Slip Locks** S
- Demand Water Pump w/Filter S
- **Dual Roof Mounted A/C High Efficiency w/Solar Panel & Chill Grille on Front A/C** S
- Hardwood Cabinet Doors/Drawers S
- Laminate Floor Tile S
- Plush Wall-to-Wall Carpet w/Carpet Pad S
- Wall Sconces S
- Wall Switches (Includes Switches for Ceiling Lights & Vents) S
- Water Heater Bypass S
- **Whole Coach Water Filtration System** S
- Wood-Finish Return Air Intake for Furnace S
- Central Vacuum System O
- Washer/Dryer O
- Water Heater 16 Gallon Output O

DRIVER CONVENIENCE

- Adjustable 3 Point Seat Belts at Driver & Front Passenger Seats S
- AM/FM Radio and Back-up Color Monitor S
- Auxiliary Start Circuit S
- Battery Shut-Off Switch S
- CB Radio Ready S
- Cruise Control S
- **Driver Side Manual Pull Down Shade** S
- **Driver/Front Passenger Ultraleather™ Captain's Chairs w/Reclining Back/Slide Controls w/Power Driver Seat** S
- **High-Output Auto A/C Heater Combo** S
- Passenger Armrest w/Integrated Magazine Rack S
- **Power Driver/Front Passenger Sun Visors** S
- Radio Switch-Main/Auxiliary Power S
- Snack Tray/Service Door at Dash S
- **Soft Surface Automotive Dash** S
- Tilt/Telescoping Steering Wheel S
- Ultraleather™ Driver & Passenger Seats, Power Driver Seat, Power Passenger Seat w/Power Foot Rest O
- Blind Spot/Security Vision Package O
- Automatic Generator Start Switch O

GALLEY

- 1.4 cu. ft. Convection Microwave Oven S
- 3-Burner, High-Output Cooktop w/Sealed Burners S
- Adjustable Cabinet Shelves (Select Cabinets) S
- Coffee Maker S
- Fan-Tastic® Power Roof Vent w/Wall Switch S
- Light/Power Range Hood S
- Norcold® 12 cu. ft. 4 Door Refrigerator w/Ice Maker and Water Dispenser S
- Roll-Out Countertop (39L) S
- Moen® Galley Faucet w/Pullout Sprayer S
- **Six-Person Pull-Out Dinette Table (Select Models)** S
- Slide-Out Dinette Drawers w/Latches S
- Soap Dispenser S
- **Solid Surface Countertop, Sink & Range Covers** S
- Under Galley Shelving & Wastebasket S
- Window Over Sink S
- Wood Trim Dinette Tabletop (Select Models) S
- 14 cu. ft. Dometic® Frost-Free Refrigerator O
- 3-Burner Sealed Drop-In Range w/Oven O

LIVING ROOM

- 26" LCD TV (40" in 40X) S
- **DVD Home Theater Sound System w/Hidden Surround Sound Speakers** S
- Flexsteel® Residential Seat Styling S
- J-Lounge Sofa (Some Models) S
- Telephone Jack S
- TV Antenna S
- Ultraleather™ J-Lounge Sofa (39S) O
- Ultraleather™ Love Seat (39L) O
- Ultraleather™ Sofa Bed O
- Fabric Sofa Sleeper w/Air Mattress O
- Ultraleather™ Sofa Sleeper w/Air Mattress O
- Computer Workstation at Dinette O
- Dual Free-Standing Ultraleather™ Recliners O
- Free-Standing Dinette w/Chairs O
- Free-Standing Dinette w/Credenza O
- Free-Standing Ultraleather™ Swivel Recliner (39L) O
- Recliner w/Table (39L) O
- Desk O

BEDROOM

- 20" LCD TV (26" in 40X) S
- AM/FM/DVD Home Theatre w/5.1 Dolby® Surround Sound Speakers S
- Slide-Out Features Overhead Cabinet S
- Dresser/Vanity w/Second Sink (Some Models) S
- Bedspread w/Décor Pillows S
- Coffey Ceiling S
- Day/Night Pleated Shades S
- **Remote Generator Start** S
- **Restonic® Deluxe Pillow Top Innerspring Mattress** S
- Second Phone Jack S
- **Ventilated Rear Wardrobe w/Cedar Lining, Carpeted Floor & Wire Organizer** S
- Wardrobe Lighting S

BATHROOM

- A/C Venting S
- **Cabinet Toe Kicks** S
- Coordinated Bath Accessories S
- Fan-Tastic® Power Roof Vent w/Wall Switch S
- Glass Shower w/Skylight and Low Threshold S
- **Moen® Faucet** S
- Hardwood Bath Door/Trims S
- Lighted Assist Handle S
- Make-Up Lights (Some Models) S
- Porcelain Toilet w/Water Saver S

SAFETY/CONVENIENCE

- 20' Sewer Hose S
- **Easy Sweep Tile Flooring at Entry Step** S
- Entry Door w/Screen Door & Deadbolt Lock S
- Four 6V/Deep Cycle House Batteries S
- **Lighted Exterior Entry Assist Handle** S
- Power Entry Step S
- Remote Heated Rear View Mirrors S
- Toilet Tank San-T-Flush™ System S
- Touch Sensor Tank Monitor System S
- Utility Compartment w/Exterior Shower S

EXTERIOR

EXTERIOR – THROUGHOUT

- 120V/12V AC/DC Converter S
- 120V/12V Wire Raceways S
- 2000 Watt Inverter w/Remote S
- **4 Point Automatic Levelers** S
- 50 Amp Service S
- 7.5 kW Onan® Quiet Diesel Generator S
- Awning Rail/ Drip Molding (Both Sides) S

- **Choice of Three Colorway Graphics** S
- Doorside Patio Receptacle S
- DSS Auto Locating Satellite Dish (Covered) S
- Dual Pane Windows w/Screens S
- Fiberglass Front Quarter Panels S
- Fiberglass Wheel Well Trims S
- **Full-Body Paint** S
- Two Stage Luggage Door Struts S
- **Weather Pro Power Awnings (Patio Awning Includes Wind Sensor)** S
- Fiberglass Front/Rear Caps w/High-Mounted Taillights S
- Water Pump Switch (Multiple Locations) S
- CSA Electrical Package** O
- Exterior Entertainment Center O
- Exterior Pull-Out Grill & Kitchenette O
- Heat Pumps O
- Window Awnings O
- Diamond Shield Clear Front Mask O

AUTOMOTIVE

- 10,000 lb. Weight Distributing Hitch Receiver w/7 Point Electrical Hook-up S
- Aluminum Wheels S
- **Dual Fuel Fill (One on Each Side)** S
- Fog Lamps S
- Mud Flaps S
- Rear Vision Camera S
- Remote Keyless Entry S
- Single Motor Denso Windshield Wipers w/Wet Arm S
- Underhood Utility Light S
- **330 HP Caterpillar® C7 Engine w/Rear Mounted Radiator** S
- **Freightliner® Chassis** S
- Chrome Exterior Mirrors O
- Front Protective Mask O
- Spotlight w/Remote Control O

STORAGE

- Continuous One Piece Compartment Bulb Seal S
- **EZ Store Compartment on Living Area Slide-Outs** S
- Gas Lift Strut Supports (Two Stage Under Slide Box) S
- Insulated Aluminum Luggage Doors w/Single Paddle Metal Latches & Stainless Steel Hinges S
- Large Compartment Doors at EZ Store S
- Lighted Luggage Compartments S
- Rotomolded Polyethylene Luggage Compartments S
- Spare Tire Compartment (N/A 39V & 40X) (Spare Tire Not Included) S

BODY STRUCTURE

- Aluminum Interlocking Floor/Wall/Ceiling Framing S
- Color Coordinated Royal Tuff-Ply Roof S
- Heated Water & Holding Tank Compartments S
- Royal Tuff-Ply Radius Roof w/Ducted A/C S

FLEETWOOD ADVANTAGES

- **Complete TuffPEX® Plumbing System** S
- **Energy Management System (EMS) w/Soft Start** S
- **Full-Wall Slide (Patent Pending) (Fleetwood Exclusive)** S
- **Power Platform™ Construction (Fleetwood Exclusive)** S
- **Vacu-Bond® Upper/Lower Floors** S
- **Vacu-Bond® Walls w/Smooth High Gloss Exterior Tuff-Coat Fiberglass** S

S = Standard O = Optional Bold Denotes Fleetwood's Key Features

** CSA standards may require substitution or deletion to achieve conformance.

Weights & Measurements

FREIGHTLINER® CHASSIS

MODELS	35H	39L	39S	39V	40X
Engine Displacement (Liters)	7.2	7.2	7.2	7.2	7.2
Wheelbase (Inches)	208"	252"	252"	252"	276"
GVWR (lbs) ¹	31,000	31,000	31,000	31,000	31,000
Front GAWR (lbs) ²	12,000	12,000	12,000	12,000	12,000
Rear GAWR (lbs) ²	19,000	19,000	19,000	19,000	19,000
Base Weight (lbs) ³	22,260	24,000	23,700	24,000	24,000
GCWR (lbs) ⁴	41,000	41,000	41,000	41,000	41,000
Hitch Rating Weight (lbs) [†]	10,000	10,000	10,000	10,000	10,000
Tongue Weight (lbs) [†]	1,000	1,000	1,000	1,000	1,000
Fuel Capacity (gal)	90	90	90	90	90

DIMENSIONS & CAPACITIES

MODELS	35H	39L	39S	39V	40X
Overall Length ⁵	35' 4"	39' 0"	39' 0"	39' 0"	40' 0"
Overall Height (with A/C)	12' 10"	12' 10"	12' 10"	12' 10"	12' 10"
Overall Width (maximum) ^{6, 7}	102"	102"	102"	102"	102"
Interior Height (maximum)	84"	84"	84"	84"	84"
Interior Width (maximum)	96"	96"	96"	96"	96"
Fresh Water Holding Tank (gal)	86	86	86	86	86
Grey Water Holding Tank (gal)	50	50	50	50	50
Black Water Holding Tank (gal)	50	50	50	50	50
Appliance Propane Tank (gal) (WC) ⁸	38	38	38	38	38
Water Heater Tank (gal)	10	10	10	10	10

Liquid Weight Reference: Water (gal) = (8.3 lbs/3.8 kgs) Fuel (gal) = (7.1 lbs/3.2 kgs) Propane (gal) = (4.2 lbs/1.9 kgs)

Metric Conversion: Multiply pounds x 0.453 to obtain kilograms. Multiply gallons x 3.785 to obtain liters. Multiply liters x 61 to obtain cubic inches.

CHASSIS

Model: Freightliner® XC-Series
Engine: Cat® C7 330 HP
Torque: 860 lb-ft @ 1440 RPM

Alternator Amps: 170 Amp Leece Neville®
Transmission: Allison® 3000 MH, 6-Speed w/Electronic Shifter

- GVWR (Gross Vehicle Weight Rating) is the maximum permissible weight of this fully loaded motor home. The GVWR is equal to or greater than the sum of the (UVW) unloaded vehicle weight plus the (CCC) cargo carrying capacity*.
- GAWR (Gross Axle Weight Rating) is the maximum permissible loaded weight a specific axle is designed to carry.
- Base Weight is the estimated weight of the motor home without fuel, options, water, cargo or passengers.
- GCWR (Gross Combined Weight Rating) is the value specified by the motor home manufacturer as the maximum allowable loaded weight of this motor home with its towed vehicle. Towing and braking capacities may be different. Refer to Fleetwood and chassis manufacturer's manuals for complete information.
- Length taken from front bumper to rear bumper (excludes accessories).
- Excludes safety equipment and awnings.
- Motor homes feature a body-width over 96" which will restrict your access to certain roads. Before purchasing, you should research any state and/or province road laws which may affect your usage.
- Tank manufacturer's listed water capacity (WC). Actual propane capacity is 80% of water listing as required by the safety code.

† The chassis manufacturer recommends the installation of a supplemental brake control system to activate the brakes on the vehicle or trailer you are towing. Hitch receiver ratings expressed are maximum for the hitch receiver installed and may require the purchase of additional equipment that is dependent on the weight of the towed load. Consult with hitch receiver manufacturer for further information.

N/A = Not available at time of printing.

*UVW and CCC are found on the cargo carrying capacity label in each RV.

IMPORTANT — PLEASE READ: Product information, photography and illustrations included in this publication were as accurate as possible at the time of printing. For further product information and changes, please visit our website at www.fleetwoodrv.com or contact your local Fleetwood dealer. Prices, materials, design and specifications are subject to change without notice. All weights, fuel, liquid capacities and dimensions are approximate. Fleetwood has designed its recreational vehicles to provide a variety of uses for its customers. Each vehicle features optimal seating, sleeping, storage and fluid capacities. The user is responsible for selecting the proper combination of loads (i.e. occupants, equipment, fluids, cargo, etc.) to ensure that the vehicle's capacities are not exceeded.



RV OWNERCARE*

Limited one-year/15,000-mile coach warranty and three-year/50,000-mile structural warranty, whichever occurs first, and it is fully transferable for the first 12 months. RV OWNERCARE is one of the RV industry's most comprehensive programs and includes systems, appliances, components and construction, with no deductible and no service charge. RV OWNERCARE coverage is provided from a company that will be around in the future to service your needs. See your nearest Fleetwood dealer for a full explanation of benefits and restrictions.

CONTACT US

To locate a dealer near you, visit our website at www.fleetwoodrv.com or call 1-800-444-4905. We can also be contacted at Fleetwood Customer Relations, P.O. Box 1007, Decatur, IN 46733.

FLEETWOOD TRAVELCADE CLUB

As a Fleetwood owner, you're eligible to become a member of the Fleetwood Travelcade Club. It's a perfect way to meet other Fleetwood owners who love to travel across America and share in the RV lifestyle. Call (877) 577-2560, or visit our website at www.fleetwoodrv.com/owners_clubs to learn more, and join the fun.

IMPORTANT—PLEASE READ

Product information, photography and illustrations included in this publication were as accurate as possible at the time of printing. For further product information and changes, please visit our website at www.fleetwoodrv.com or contact your local Fleetwood dealer. Prices, materials, design and specifications are subject to change without notice. All weights, fuel, liquid capacities and dimensions are approximate. Fleetwood has designed its recreational vehicles to provide a variety of uses for customers. Each vehicle features optimal seating, sleeping, storage and fluid capacities. The user is responsible for selecting the proper combination of loads (i.e. occupants, equipment, fluids, cargo, etc.) to ensure that the vehicle's capacities are not exceeded.



treadlightly!
LEAVING A GOOD IMPRESSION



YOUR LOCAL FLEETWOOD DEALER IS:

*For complete info see your Fleetwood dealer.

©2006. Fleetwood Enterprises, Inc.
Printed in the USA. Inventory Control Number DI07B2, 11/06.
Model Year 2007, Second Edition.

