

Make life one big roamin' holiday.



2007
BOUNDER DIESEL
CLASS A DIESEL



Trusted Brand | Innovation | 300 HP Diesel Engine | Power Platform Construction | Great Value



Bounder Diesel 38N shown in Beige Bounty interior decor.

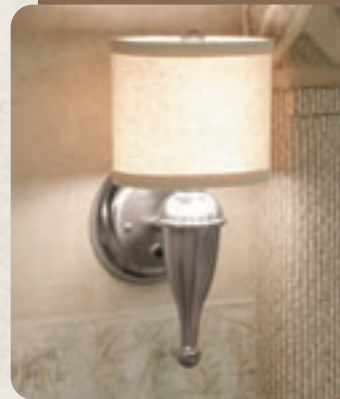
- **THE WRAP AROUND DASH** features large, easy-to-read gauges and easy-to-reach controls. Optional power sun visors help reduce glare, while an AM/FM radio with a CD player and Sirius® satellite radio entertains your ears.





The beloved Bounder. Only better.

It's a match made in heaven – the wildly popular Bounder and a powerful diesel engine. Bounder Diesel boasts all of Bounder's hallmarks—such as innovation, functionality, value—and a diesel engine in back that can propel you over that steep grade without breaking a sweat. But make no mistake, this is every bit a Bounder, so you can still camp with your Bounder buddies. Just be prepared to give lots of tours.



- **CONTEMPORARY LIGHT FIXTURES** provide ample lighting, as well as a touch of home.



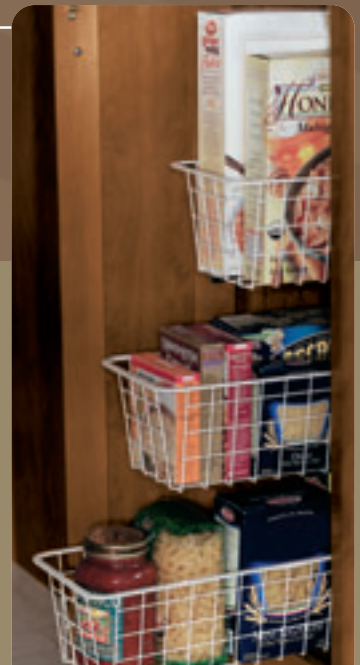
- **THE ENTERTAINMENT SYSTEM** sports a 26" LCD TV and a 5.1 Dolby® home theatre system with surround sound, DVD, CD and AM/FM radio. Boredom takes a holiday!

There's room to roam inside, too.

Go ahead, invite everyone over to your place. Bounder Diesel has plenty of room. With triple and quad slide-outs, including one full-wall slide floor plan, you can spread out and relax. The living room has large windows for a wide-open feeling, dual sofas or a sofa and a love seat, plus 84" of floor-to-ceiling room. With all this space, your guests may never want to leave – that's the bad news.



- **THE DINETTE** has ample elbow room for four to play a spirited game of cards. Just be careful nobody is cheating while you're gazing out that great big picture window!



- **THE PANTRY** keeps your snacks nice and neat, easy to see, ready to eat.



- **POTS AND PANS DRAWER** fits full-size cookware, so you can cook family reunion-size meals.



○ **THE GALLEY** has it all — a 3-burner stove with optional oven, convection microwave, double sink, solid surface countertops, and a big 12 cu. foot Norcold® refrigerator to stock up for parties. And you can even fit in party trays or pizza boxes, thanks to its four-door design.

○ **OVERHEAD STORAGE** provides ample space to keep those things you can't live without, but might not use every day.



○ **UNDER-THE-SINK STORAGE** holds everything you need to keep your kitchen tidy. A clean kitchen is a happy kitchen. It also has a space specially designed to put your sink and range covers when not in use.





○ **THE BEDROOM** is built for comfort — from the Restonic® innerspring mattress to the extra space provided by the slide-out. But elegance has its place here too, courtesy of the bedspread with matching pillow shams.



○ **SPACIOUS DRAWER STORAGE** extends all the way out to accommodate folded clothes or extra linens.



○ **THE PULL-OUT HAMPER** (select models) is cleverly built into the bedroom cabinetry so your dirty clothes are sequestered out of sight.

Once you're all alone, it's time to get comfy.

The best place to wind down is the bedroom suite. Start with a soothing rinse in your roomy, sunlight-filled shower. Then slip into some warm bedclothes right out of the dryer (optional). After a little TV or a good book, hit the remote generator switch on your bedside table and indulge in a good night's sleep on your ultra-comfy queen-size bed.



- **THE BATHROOM** makes you feel right at home with a large sink with a solid-surface countertop, a full-size medicine cabinet with vanity lights, and brushed nickel towel bars.

- **VANITY PULL-OUT BASKETS** are a handy place to keep things like extra towels, socks and such (select models).



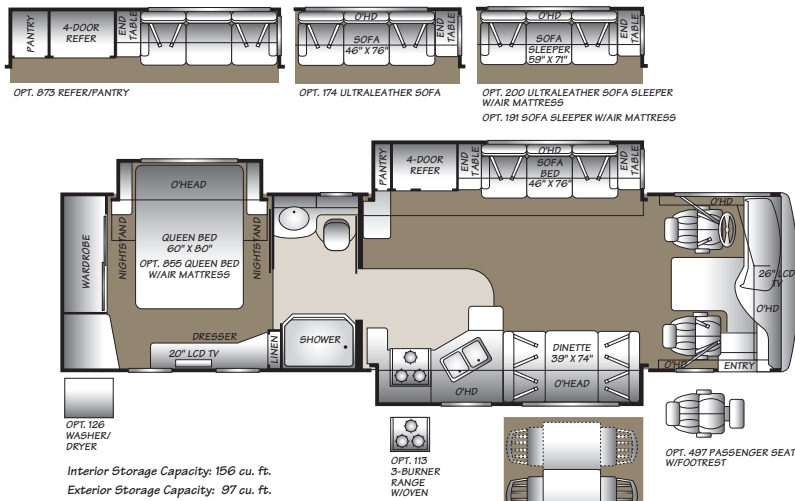
- **THE MIRRORED WARDROBE** gives you plenty of cedar-lined space, with handy wire shelving to hang your clothes, and a tall mirror to see how they hang on you.

- **THE 20" LCD TV** is perfect to view your favorite late-night talk show or the late, late movie.

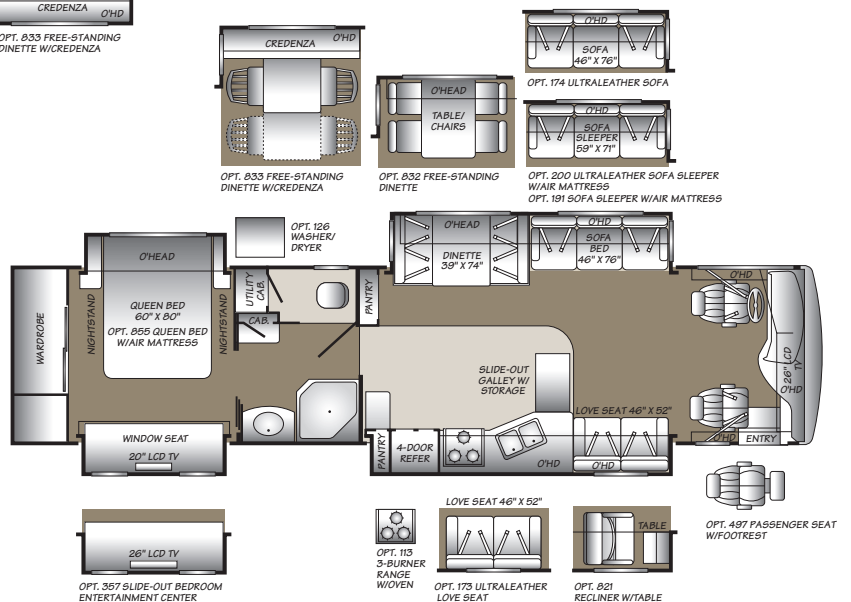


More horses. No hump.

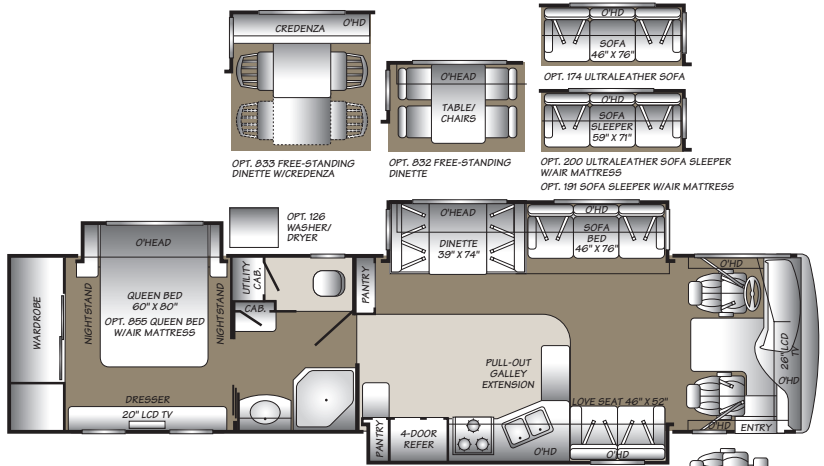
With a mighty 300-horsepower Caterpillar® C7 diesel engine, you get 860 foot pounds of hill-climbing, load-towing torque. You're sure to notice the smooth ride and self-leveling suspension. And all you have to give up is the engine hump and front engine noise.



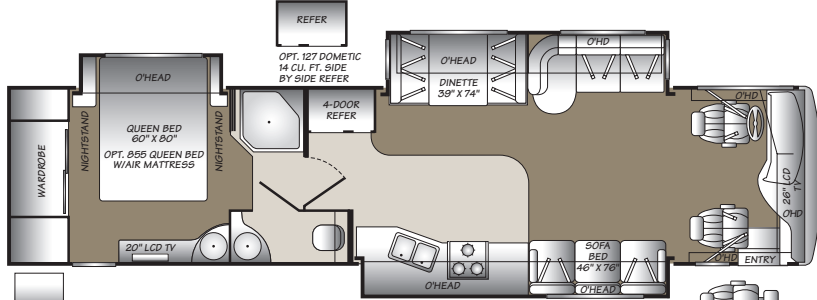
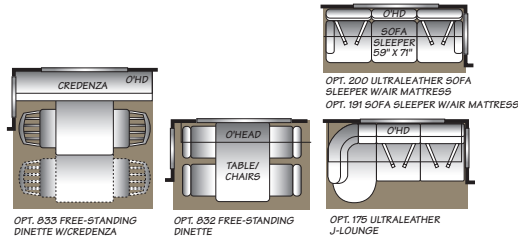
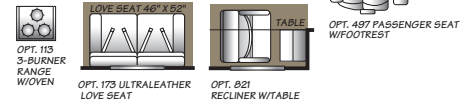
38L Quad Slide-Out



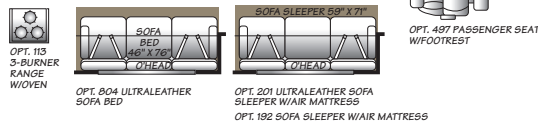
38N Triple Slide-Out



Interior Storage Capacity: 213 cu. ft.
Exterior Storage Capacity: 132 cu. ft.

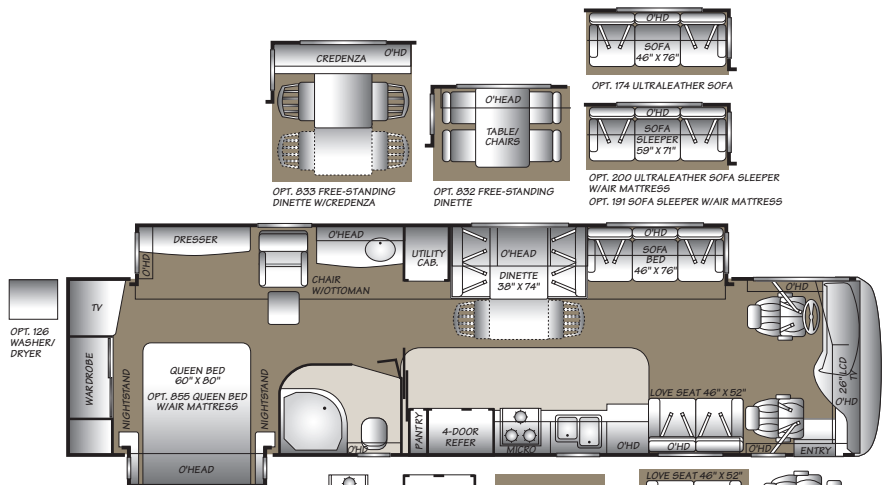


Interior Storage Capacity: 179 cu. ft.
Exterior Storage Capacity: 130 cu. ft.

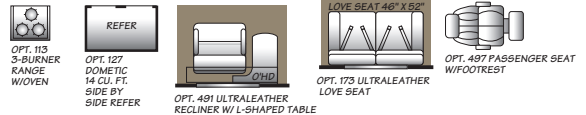


38S Triple Slide-Out

38V Full Wall Slide Double Slide-Out



Interior Storage Capacity: 186 cu. ft.
Exterior Storage Capacity: 147 cu. ft.



Seatbelt configuration may vary depending on options chosen.

The innovation of Bounder. The luxury of diesel. And the reputation of Fleetwood behind it all.

Just like Bounder, Bounder Diesel is designed, built and backed by Fleetwood. After more than 55 years as one of America's leading RV manufacturers, we know what RVers want. So we deliver smart designs, high-quality construction and outstanding service. Because we understand that Bounder isn't just a motor home, it's a way of life.

It's easy to see where Bounder Diesel gets its good looks.

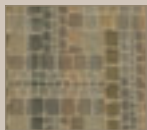
Choose from three handsome paint options, all featuring Full Body Paint standard.

RIVER ROCK

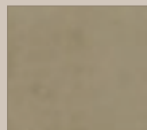


(Standard)

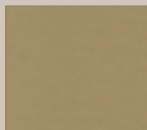
LIVING/DINING ROOM



Dinette Cushions



Sofa

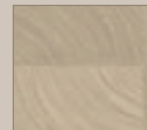


Ultraleather™ Driver & Front Passenger Seats, Sofa (optional)



(Optional)

BEDROOM



Headboard & Bedspread



Pillow Shams & Throw Pillows

BAHAMA BLUES

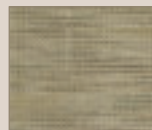


(Standard)

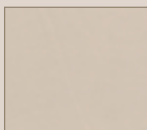
LIVING/DINING ROOM



Dinette Cushions



Sofa

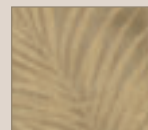


Ultraleather™ Driver & Front Passenger Seats, Sofa (optional)

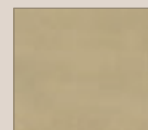


(Optional)

BEDROOM



Headboard & Bedspread



Pillow Shams & Throw Pillows



BOUNDER DIESEL

Why Fleetwood?



Passion

We're truly passionate about the RV lifestyle. Fleetwood was founded by RV enthusiasts, and that tradition continues today.



Quality

There's no cutting corners. Skilled craftsmen build every Fleetwood RV for maximum durability and longevity.



Service

Help is nearby. When you need an upgrade or repair, you'll find facilities all across North America and more than 1,100 dealers ready to assist you.



Warranty

Breathe easier with RV Ownercare, one of the best warranties in the industry. See your Fleetwood dealer for details.



Trust

More people trust Fleetwood. After all, we've spent over 50 years perfecting RVs, earning the loyalty of generations of RVers.

It has "inner beauty" too.

Take your choice from some of the finest interior woods and fabrics in the Fleetwood family. Sure, they're beautiful, but they're also durable and comfortable.

INTERIOR WOOD FINISHES



Summit Ash



Plantation Cherry

BEIGE BOUNTY*



(Standard)



(Optional)

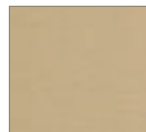
LIVING/DINING ROOM



Dinette Cushions

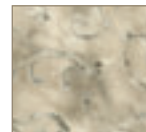


Sofa



Ultraleather™ Driver & Front Passenger Seats, Sofa (optional)

BEDROOM



Headboard & Bedspread



Pillow Shams & Throw Pillows

BEIGE BOUNTY II*



(Optional)



(Optional)

*Beige Bounty interior is available with either the Beige Bounty or Beige Bounty II exteriors.

With exterior features like these, you may find yourself saying, “We really should get out more often.”

When listing the Bounder Diesel’s best exterior features, the full-body DuPont® paint job has to be right at the top. Heck, we could go on and on about how beautiful and long-lasting it is, but we’ll leave that to you.



○ **THE UTILITY COMPARTMENT** provides one central place to empty your holding tanks, flush the black tank, and even hose off your dog. After sunset, you’ll appreciate the compartment lighting.



○ **THE EZ STORE COMPARTMENT** makes it EZ 4U to store long and large gear without having to stoop under the slide-out, and the wide door stays open with gas-lift strut supports.



○ **ILLUMINATED ENTRY HANDLE** glows from within, so you can get a grip when it gets dark.



○ **PULL-OUT STORAGE BASKET** (select models) keeps small items from scattering about in transit. Tennis, anyone?



○ **HEATED MIRRORS** look cool, but stay warm to prevent dew or frost build-up.



○ **HIGH-MOUNTED TAILLIGHTS** are easy to see even over towed vehicles. This is one time it’s good to draw attention to your rear end.



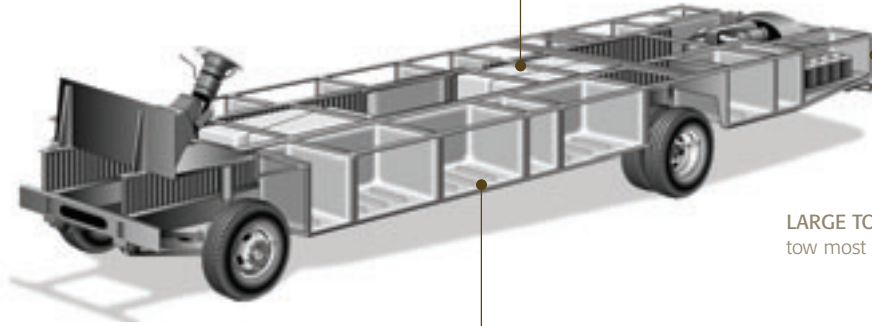
○ **FIBERGLASS REAR CAP** features a two-piece ladder, so you can make it up to the roof and back.

Our Power Platform is solid as a rock and ready to roll.

Fleetwood's patented Power Platform begins with two 10-inch steel I-beams welded to the chassis. Together with the steel outriggers, they create a basement for the fluid tanks and storage, while supporting the floor, walls and roof with a rigid steel frame. This complements the chassis to make it even stronger.

HOLDING TANKS are enclosed between the upper and lower basement floors so they can be heated in cold weather to help prevent freezing.

VEHICLE STABILITY is enhanced because the holding tanks are positioned in the bottom center of the platform.



LARGE TOWING CAPACITY † lets you tow most vehicles with ease.

BASEMENT STORAGE features aluminum doors, compartments constructed of heavy-duty molded polyethylene so you can hose them out. They are also individually lit for after dark.

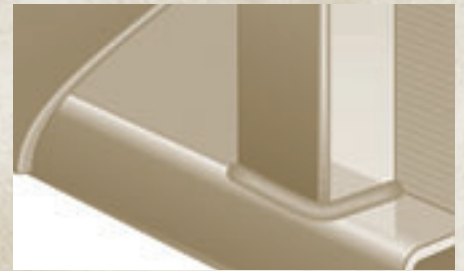
† The chassis manufacturer recommends the installation of a supplemental brake control system to activate the brakes on the vehicle or trailer you are towing. Hitch receiver ratings expressed are maximum for the hitch receiver installed and may require the purchase of additional equipment that is dependent on the weight of the towed load. Consult with hitch receiver manufacturer for further information.



○ **INTER-LOCKING FLOOR-TO-SIDEWALL CONNECTION** locks tightly to keep out water, dust, and noise, and helps eliminate squeaks and rattling.



○ **INTER-LOCKING CEILING-TO-SIDEWALL CONSTRUCTION** helps keep the box square. This assures a proper cabinet fit.



○ **VACU-BOND® SIDEWALL CONSTRUCTION** creates a strong, weather-resistant structure. All sidewalls, floors and ceilings are Vacu-bonded to a durable aluminum or steel frame.

DUAL AIR CONDITIONING UNITS are mounted on top to improve cooling and create more room for storage below.

THE 2-STAGE DUPONT® PAINT PROCESS ensures maximum durability, easy upkeep and a sleek appearance.

AWNINGS for the patio and entry doors provide a covered spot to sit and chat come rain or shine (electric awnings optional).

4-POINT AUTOMATIC LEVELING SYSTEM levels your coach at the push of a button.



STYLISH FIBERGLASS FRONT CAP adds a nice finishing touch to Bounder Diesel's profile.

Standard Features & Options

2007 Bounder Diesel

INTERIOR

INTERIOR – THROUGHOUT

- 10-Gallon Quick-Recovery Water Heater w/Direct Spark Ignition (Gas/Electric) S
- 20,000/25,000 BTU Dual Furnaces S
- **84" Interior Ceiling Height** S
- Ceiling-Ducted Roof A/C S
- Brushed Nickel Cabinet Hardware S
- Crown Molding S
- Day/Night Pleated Shades S
- Deluxe Roller Bearing, Full Extension Drawer Guides & Transit-Ship Locks S
- Demand Water Pump w/Filter S
- **Dual Roof-Mounted A/C High Efficiency w/Solar Panel & Chill Grille on Front A/C** S
- Hardwood Cabinet Doors/Drawers S
- Large Overhead Cabinets w/Raised-Panel Doors S
- Plush Wall-to-Wall Carpet w/Carpet Pad S
- Radius Corner Cabinetry S
- Solar Battery Charger S
- Solid Surface Countertops (Lavy & Galley) S
- Vinyl Flooring at Entry S
- Wall Switches (Includes Switches for Ceiling Lights & Vents) S
- Water Heater Bypass S
- **Whole Coach Water Filtration System** S
- Window Coverings S
- Wood-Finish Return Air Intake for Furnace S
- Woven Jacquard Feature Fabrics S
- Washer/Dryer O
- Water Heater 16 Gallon Output O

DRIVER CONVENIENCE

- Adjustable 3-Point Seat Belts at Driver & Front Passenger Seats S
- AM/FM Radio w/CD, Satellite & color back up monitor S
- **Auto A/C Heater Combo** S
- Auxiliary Start Circuit S
- Battery Shut-Off Switch S
- CB Radio Ready S
- Cruise Control S
- Dash Fans S
- **Driver/Front Passenger Ultraleather™ Captain's Chairs w/Reclining Back/Slide Controls w/Power Driver Seat** S
- Multi-Function Sun Visor S
- Passenger Armrest w/Integrated Magazine Rack S
- Radio Switch-Main/Auxiliary Power S
- **Soft-Surface Automotive Dash w/Snack Tray & Convenient Service Door** S
- Tilt/Telescoping Steering Wheel S
- Ultraleather™ Driver & Passenger Seats, Power Driver Seat, Power Passenger Seat w/Power Foot Rest O
- Power Driver/Front Passenger Sun Visors O

GALLEY

- 22" 3-Burner, High-Output Cooktop S
- Cabinet Toe Kicks S
- Convection Microwave Oven S
- Fan-Tastic™ Power Roof Vent w/Wall Switch S
- Large, Porcelain Double Sink S
- Norcold® 12 cu. ft. Refrigerator S
- Roll-Out Countertop (38N, 38L) S
- Single-Lever Faucet w/ pull out sprayer S
- Soap Dispenser S
- **Solid Surface Countertop, Sink & Range Covers, Mirror backsplash in galley** S
- **Under Galley Shelving & Wastebasket** S
- Vinyl Flooring S
- Window Over Sink S
- 22" 3-Burner, High-Output Range w/Oven O
- Free Standing Table & Chairs O

LIVING ROOM

- 26" LCD TV in Front Overhead S
- Beveled Decor Mirrors S
- Flexsteel™ Residential Seat Styling S
- Home Theater Sound System S

- Satellite Dish Ready S
- Telephone Jack S
- TV Antenna S
- Video Switch Box S
- Free-Standing Swivel Recliner (38V) O
- Recliner w/Table (38L & 38N) O
- Sofa Sleeper w/Air Mattress (34H, 38L, 38N, 38S & 38V) O
- Ultraleather™ J-Lounge (38S) O
- Ultraleather™ Love Seat (38L, 38N & 38V) O
- Ultraleather™ Sofa O

BEDROOM

- 20" LCD TV S
- Bedspread w/Decor Pillows S
- Innerspring Mattress S
- Rear Speakers S
- Remote Generator Start S
- Second Phone Jack S
- **Ventilated Rear Wardrobe w/Cedar Lining, Carpeted Floor & Wire Organizer** S
- Select Comfort Mattress O

BATHROOM

- A/C Venting S
- Assist Handle S
- Brushed Chrome Bath Accessories S
- **Cabinet Toe Kicks** S
- Fan-Tastic™ Power Roof Vent w/Wall Switch S
- Glass Shower w/Skylight and Low Threshold S
- Make-up Lights S
- Porcelain Toilet w/Water Saver S
- Vinyl Flooring S

SAFETY/CONVENIENCE

- Carbon Monoxide Detector/Alarm S
- Fire Extinguisher S
- Propane Detector/Alarm S
- RV System Monitor Panel S
- Smoke Detector/Alarm S

EXTERIOR

EXTERIOR – THROUGHOUT

- 120V/12V AC/DC Converter S
- 120V/12V Wire Raceways S
- **2000 Watt Inverter w/Remote** S
- **4-point Automatic Electric Levelers** S
- 7.5 kW Onan™ Quiet Diesel Generator S
- 50-Amp Service S
- Aerodynamic Bus Styling S
- Awning Rail/Drip Molding (Both Sides) S
- **Choice of Four Colorway Graphics** S
- **Dual Pane Windows w/Screens** S
- Fiberglass Front & Rear Bumpers & Wheel Wells S
- Fiberglass Front/Rear Caps w/High-Mounted Taillights S
- **Full Body Paint** S
- **Patio & Entry Door Awning** S
- Patio Receptacles S
- Remote/Heated Exterior Rear-View Mirrors S
- Water Pump Switch (Multiple Locations) S
- Window Awning Package O
- Auto-Locating Satellite Dish O
- CSA (Canadian Specs) Electrical Package-Freightliner™ O
- Heat Pumps O

AUTOMOTIVE

- 10,000-lb. Weight-Distributing Hitch Receiver w/7-pin Electrical Hook-up S
- **300-HP Caterpillar™ Engine w/Rear-Mounted Radiator** S
- Air Suspension S
- **Dual Fuel Fill (One on Each Side)** S
- Fog Lamps S
- **Freightliner™ Chassis** S
- Halogen Headlamps S
- Large Bonded-in Windshield S
- Mud Flaps S
- Rear-Vision Color Adjustable Camera S
- Stainless-Steel Wheel Simulators S

- Single Motor Denso™ Windshield Wipers w/Wet Arm S
- Tire Valve Extenders S
- Underhood Utility Light S
- Electric Awning O
- Front Protective Mask O
- Remote Keyless Entry O

SAFETY/CONVENIENCE

- 20' Sewer Hose S
- Central Electrical Panel S
- Dual Battery Charge Control S
- Four 6V/Deep-Cycle House Batteries S
- Park Cable Receptacle S
- Porch Light (Doorside) S
- **Power Entry Step** S
- **Radius Entry Door w/Deadbolt Latch (Keyless-Entry Ready)** S
- Roof Ladder S
- Side-Opening, Engine-Access Door S
- Toilet Tank San-1-Flush™ System S
- Utility Compartment w/Exterior Shower S

STORAGE

- Aluminum Luggage Door Seal Frames S
- Central Utility Compartment S
- Continuous One-Piece Compartment Bulb Seal S
- EZ-Store Compartment on Living Area Slide-Outs S
- Gas-Lift Strut Supports (Two-Stage Under Slide Box) S
- Hidden, Stainless Steel Latch Rods S
- **Insulated Aluminum Luggage Doors w/Single Paddle Metal Latches & Stainless Steel Hinges** S
- Lighted Luggage Compartments S
- Rotomolded Polyethylene Luggage Compartments S
- Spare Tire Compartment (excludes V model) (Spare Tire Not Included) S

BODY STRUCTURE

- Aluminum Interlocking Floor/Wall/Ceiling Framing S
- Heated Water & Holding Tank Compartments S
- Paco™ Beam System S
- **Royal Tuff-Ply Radius Roof w/Ducted A/C** S

FLEETWOOD ADVANTAGES

- **Complete TuffPEX™ Plumbing System**
- **Energy Management System (EMS) w/Soft Start**
- **Power Platform Construction (Fleetwood Exclusive)**
- **Vacu-Bond™ Upper/Lower Floors**
- **Vacu-Bond Walls™ w/Smooth High-Gloss Exterior Tuff-Coat™ Fiberglass**



Bold Denotes Fleetwood's Key Features.

S = Standard O = Optional

Weights & Measurements

FREIGHTLINER® CHASSIS

MODELS	34H	38L	38N	38S	38V
Engine Displacement (Liters)	7.2	7.2	7.2	7.2	7.2
Wheelbase (Inches)	208	252	252	252	252
GVWR (lbs) ¹	31,000	31,000	31,000	31,000	31,000
Front GAWR (lbs) ²	12,000	12,000	12,000	12,000	12,000
Rear GAWR (lbs) ²	19,000	19,000	19,000	19,000	19,000
Base Weight (lbs) ³	22,155	24,000	22,324	22,605	24,000
GCWR (lbs) ⁴	41,000	41,000	41,000	41,000	41,000
Hitch Rating Weight (lbs) [†]	10,000	10,000	10,000	10,000	10,000
Tongue Weight (lbs) [†]	1,000	1,000	1,000	1,000	1,000
Fuel Capacity (gal)	90	90	90	90	90

DIMENSIONS & CAPACITIES

MODELS	34H	38L	38N	38S	38V
Overall Length ⁵	34' 8"	38' 4"	38' 4"	38' 4"	38' 4"
Overall Height (with A/C)	12' 10"	12' 10"	12' 10"	12' 10"	12' 10"
Overall Width (maximum) ^{6,7}	102	102	102	102	102
Interior Height (maximum)	84	84	84	84	84
Interior Width (maximum)	96	96	96	96	96
Fresh Water Holding Tank (gal)	86	86	86	86	86
Grey Water Holding Tank (gal)	50	50	50	50	50
Black Water Holding Tank (gal)	50	50	50	50	50
Appliance Propane Tank (gal) (WC) ⁸	25	25	25	25	25
Water Heater Tank (gal)	10	10	10	10	10

Liquid Weight Reference: Water (gal) = (8.3 lbs/3.8kgs) Fuel (gal) = 7.1 lbs/3.2 kgs) Propane (gal) = (4.2 lbs/1.9 kgs)

Metric Conversion: Multiply pounds x 0.453 to obtain kilograms. Multiply gallons x 3.785 to obtain liters. Multiply liters x 61 to obtain cubic inches.

CHASSIS

Model: Freightliner® XC-Series
Engine: Cat® C7 300HP
Torque: 860 lb-ft @ 1440 RPM

Alternator Amps: 170 Amp Lecce Neville®
Transmission: Allison® 3000MH 6-Speed w/Electronic Shifter

- GVWR (Gross Vehicle Weight Rating) is the maximum permissible weight of this fully loaded motor home. The GVWR is equal to or greater than the sum of the (UVW) unloaded vehicle weight plus the (CCC) cargo carrying capacity*.
- GAWR (Gross Axle Weight Rating) is the maximum permissible loaded weight a specific axle is designed to carry.
- Base Weight is the estimated weight of the motor home without fuel, options, water, cargo or passengers.
- GCWR (Gross Combined Weight Rating) is the value specified by the motor home manufacturer as the maximum allowable loaded weight of this motor home with its towed vehicle. Towing and braking capacities may be different. Refer to Fleetwood and chassis manufacturer's manuals for complete information.
- Length taken from front bumper to rear bumper (excludes accessories).
- Excludes safety equipment and awnings.
- Motor homes feature a body-width over 96" which will restrict your access to certain roads. Before purchasing, you should research any state and/or province road laws which may affect your usage.
- Tank manufacturer's listed water capacity (WC). Actual propane capacity is 80% of water listing as required by the safety code.

† The chassis manufacturer recommends the installation of a supplemental brake control system to activate the brakes on the vehicle or trailer you are towing. Hitch receiver ratings expressed are maximum for the hitch receiver installed and may require the purchase of additional equipment that is dependent on the weight of the towed load. Consult with hitch receiver manufacturer for further information.

N/A = Not available at time of printing.

*UVW and CCC are found on the cargo carrying capacity label in each RV.

IMPORTANT – PLEASE READ: Product information, photography and illustrations included in this publication were as accurate as possible at the time of printing. For further product information and changes, please visit our website at www.fleetwoodrv.com or contact your local Fleetwood dealer. Prices, materials, design and specifications are subject to change without notice. All weights, fuel, liquid capacities and dimensions are approximate. Fleetwood has designed its recreational vehicles to provide a variety of uses for its customers. Each vehicle features optimal seating, sleeping, storage and fluid capacities. The user is responsible for selecting the proper combination of loads (i.e. occupants, equipment, fluids, cargo, etc.) to ensure that the vehicle's capacities are not exceeded.



RV OWNERCARE*

Limited one-year/15,000-mile coach warranty and three-year/50,000-mile structural warranty, whichever occurs first, and it is fully transferable for the first 12 months. RV OWNERCARE is one of the RV industry's most comprehensive programs and includes systems, appliances, components and construction, with no deductible and no service charge. RV OWNERCARE coverage is provided from a company that will be around in the future to service your needs. See your nearest Fleetwood dealer for a full explanation of benefits and restrictions.

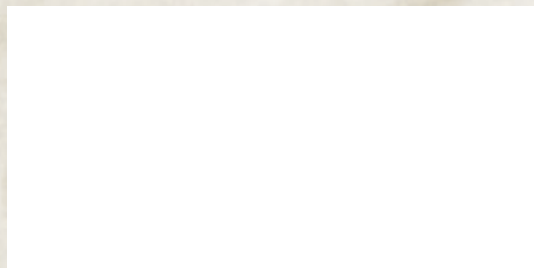
CONTACT US

To locate a dealer near you, visit our website at www.fleetwoodrv.com or call 1-800-444-4905. We can also be contacted at Fleetwood Customer Relations, P.O. Box 1007, Decatur, IN 46733.

FLEETWOOD TRAVELCADE CLUB

As a Fleetwood owner, you're eligible to become a member of the Fleetwood Travelcade Club. It's a perfect way to meet other Fleetwood owners who love to travel across America and share in the RV lifestyle. Call (877) 577-2560, or visit our website at www.fleetwoodrv.com/owners_clubs to learn more, and join the fun! For Bounder specific club information visit: Bounders of America at www.bounder.org or Bounders United at www.bounder.net!

YOUR LOCAL FLEETWOOD DEALER IS:



*For complete info see your Fleetwood dealer.

©2006. Fleetwood Enterprises, Inc.
Printed in the USA. Inventory Control Number BDRD07B2, 11/06.
Model Year 2007, Second Edition.

IMPORTANT—PLEASE READ

Product information, photography and illustrations included in this publication were as accurate as possible at the time of printing. For further product information and changes, please visit our website at www.fleetwoodrv.com or contact your local Fleetwood dealer. Prices, materials, design and specifications are subject to change without notice. All weights, fuel, liquid capacities and dimensions are approximate. Fleetwood has designed its recreational vehicles to provide a variety of uses for customers. Each vehicle features optimal seating, sleeping, storage and fluid capacities. The user is responsible for selecting the proper combination of loads (i.e. occupants, equipment, fluids, cargo, etc.) to ensure that the vehicle's capacities are not exceeded.



tread lightly!
LEAVING A GOOD IMPRESSION



 **FLEETWOOD**
Driven to Explore