



MONACO®

DRIVING YOUR DREAM.

KNIGHT®

 | 07





KNIGHT®

COMFORT FOR THE LONG HAUL.

When you're traveling from coast to coast, you want a motorcoach that's comfortable all the way. Step into the 2007 Knight. This value-packed beauty pampers you from sunup to sundown — with lofty seven-foot ceilings and plush new sofas and decors. On the 40SKT shown here, there's even a built-in hutch to house the impressive 32" flatscreen LCD TV.

GALLEY. This year, the galley cooktop has sealed burners to protect against messy food spills, while the new ceramic tile backsplash comes with elegant Corian® molding. We're also offering new options like a stainless steel package for the appliances.

BEDROOM. After a long day of sightseeing, you'll welcome the comfort of the roomy queen bed with hardwood headboard. For your viewing pleasure, there's a built-in 20" color TV. And when you're ready to sleep, blackout day/night shades keep the room nice and dark. A ceiling fan is optional.

FULL-WALL SLIDE

▼ PANASUITE™

ENJOY LIFE TO THE FULLEST.

Here's a big idea. What if, instead of having two slides side-by-side, you had one luxurious long one? Introducing PanaSuite™, the new full-wall slide from Monaco Coach Corporation. Just imagine it. Wide open aisles. No obstructions or tight corners. And more livability at every turn. Ahhh yes, we thought you'd like that.

PanaSuite™ is standard on the new 40DFT.



LUXURY. INNOVATION. HAPPY TRAVELERS. IT ALL SAYS MONACO.

INTERIOR



Wherever you travel across America, it's easy to spot the Monaco owners. They're the ones with the smug, happy grins on their faces. And who could blame them? When you own a Monaco, you own the best. The best in luxury, performance, safety, technology and comfort. It's all here. And it's all yours for the taking. Come on, freedom lovers. Make your move to Monaco luxury. After all, you already know how to grin.



40SKT | NEWPORT CHERRY | STORM CLOUD

KNIGHT®



40SKT | NEWPORT CHERRY | STORM CLOUD

YOUR KEY TO THE GOOD LIFE.



Just turn the key, and say hello to the good life. Everything in the Knight's cockpit is designed to make your life easier and more enjoyable — including power sunvisors, adjustable brake and accelerator pedals, and helpful options like the Aladdin™ Junior video coach monitoring system.

The silver graphite metallic dash is new this year, along with optional Sirius satellite radio and a keyless entry system. And to help you park, there's a color rear vision system with audio and adjustable camera, or an optional three-camera system.

PRIVACY SUNSCREENS. For added privacy or shelter from the sun, just pull down the handy sunscreens in the front of the coach.

CO-PILOT SEAT. When it's time to kick back, the new OptimaLeather™ co-pilot seat features six-way power controls and a power footrest.

COCKPIT. Whether you're driving or parked, you'll love the comfort of the posh new OptimaLeather™ captain's chairs with six-way power. And with the in-dash stereo and home theater surround sound system, you'll be treated to state-of-the-art sound no matter where you sit.



NO SEAMS. ADDED SAFETY.

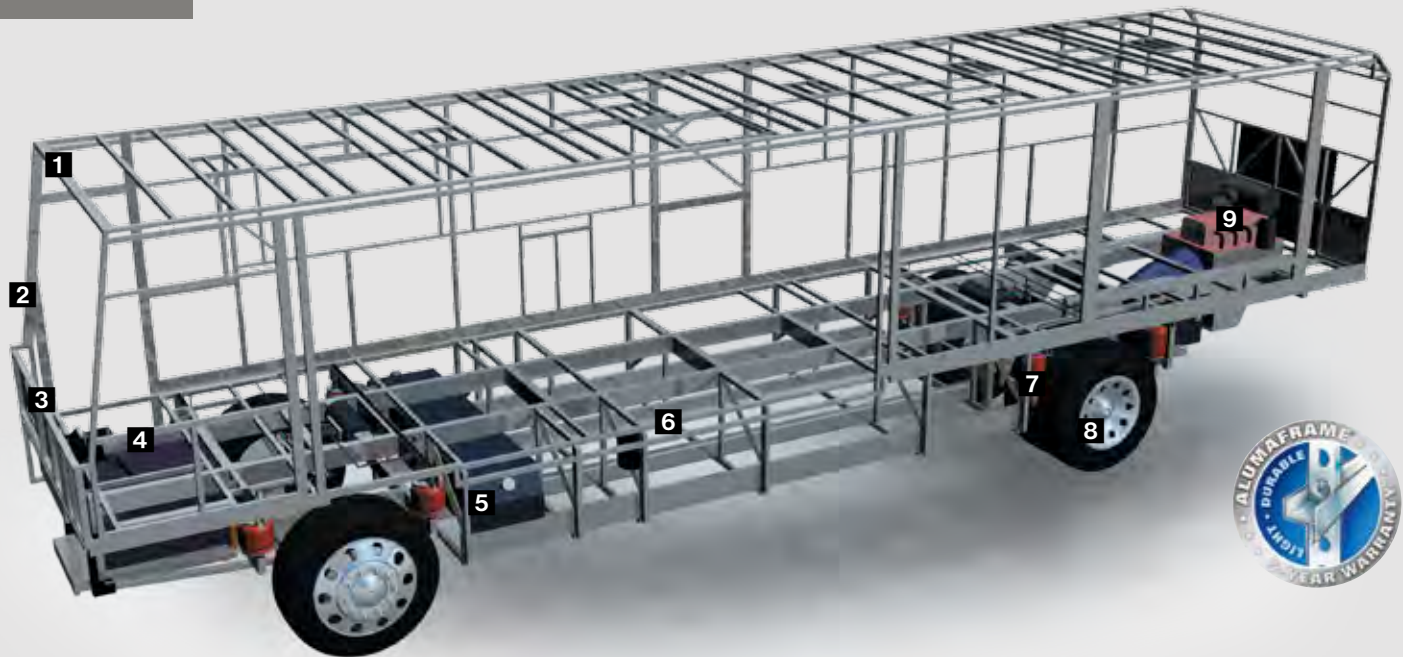
When you're driving, you need to see everything in front of you — pedestrians, potholes, possums scurrying across the road. With our exclusive Panaview™ 1-Piece Windshield, you can. There's no annoying black rubber seam running down the middle of your windshield. It's the largest unobstructed view in the industry. That's big!

 PANAVIEW™

1-PIECE WINDSHIELD



KNIGHT®



ROADMASTER RR8R RAISED RAIL CHASSIS

1 The Knight features Monaco's exclusive Alumaframe® Superstructure.

Our revolutionary system of aluminum C-Channel crossmembers runs the entire length of the unit, with double-welded intersections for added strength. This rigid design is both lighter and sturdier than wood or tubular aluminum frames — and much more reliable than butt-welded or screwed joint designs. From dirt roads to potholes, you can count on Alumaframe® to handle the relentless stresses of the road and provide superior structural integrity for many years to come.



Alumaframe®
(C-Channel)

2 A steel cage cockpit gives the Roadmaster chassis incomparable strength and safety in the front of the coach.

3 Every Roadmaster chassis features a steel firewall for added protection in the cockpit.

4 The main rails feature an exclusive raised rail design which provides for larger full pass-through storage bays with flush floors. Other highlights include a 3/8" thick frame rail — compared to the 1/4" of other manufacturers — and a stacked aluminum intercooler and radiator for optimum heat transfer and cooling.

5 Dual fuel fill allows you to fill the tank from either side of the coach, for greater convenience and flexibility at the pump.

6 This steel truss system is engineered as part of the chassis and provides outstanding strength and rigidity plus pass-through storage. In addition, the structure is pre-primed and coated with a rust-inhibiting paint.

7 Eight air bags work in conjunction with eight gas-powered shock absorbers to prevent road trauma from ever reaching the coach.

Monitored leveling sensors continually adjust the air pressure at each axle to maintain a level ride and eliminate nosediving, weight transfer, and floating on curved roads. This system also stabilizes the coach on uneven surfaces.

MAY WE BUILD YOU A CHASSIS?

Did you know that every Roadmaster chassis is custom designed and built for the Monaco coach that will ride on it? It's a novel idea, but our owners seem to like it. And it pays off — in better performance, safety and reliability. Owners also like the fact that Roadmaster, a division of

Monaco Coach Corporation, only does one thing: They build chassis for motorhomes. Not trucks. Not buses. Just motorhomes. So naturally, they do it better. No wonder Roadmaster is the leading high-end diesel chassis manufacturer in America.

OUTBOARD AIR BAG SUSPENSION

The outboard-mounted air bags are protected by two steel plates and are placed farther apart than the competition, providing a wider and more stable platform for the coach. The active suspension automatically adjusts the pressure of the air bags as you drive and virtually eliminates nosediving and the side-to-side body sway associated with high wind conditions, curvy roads and emergency maneuvers.



The Knight features a gutsy standard Cummins® ISC 330 diesel engine.

8 Automatic Traction Control (ATC) eliminates wheel slippage in slick conditions and heightens control. The Anti-Lock Braking System (ABS) gives you superior stopping power, especially on steep grades. Together, these sophisticated systems offer the very best safety on the road.

9 Allison® 3000 MH 6-speed World Transmission and electronic shifter.

The three-point engine mounting system lowers the coach's center of gravity and reduces the amount of vibration that reaches the coach. The mounting also makes the engine easier to service.

A 10,000 lb. tow hitch rating is the highest in its class.

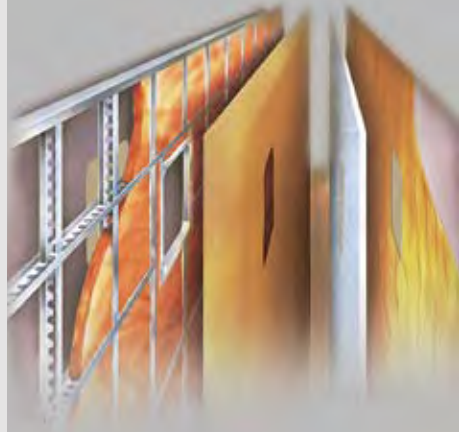
CONSTRUCTION



ROOF CONSTRUCTION:

(top to bottom)

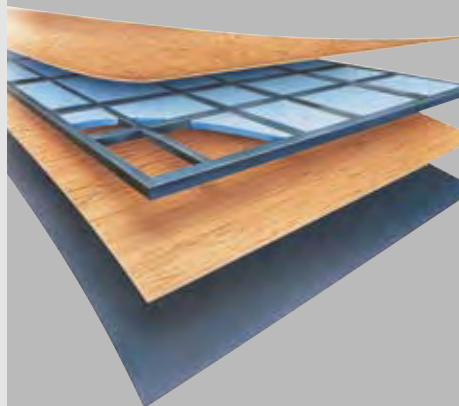
- One-piece peaked fiberglass roof
- Luaun backing
- Thick, tapered bead foam insulation
- Aluminum double I-beam superstructure filled with fiberglass insulation
- Vapor barrier
- Structure foam: thermal insulative barrier
- 1/2" bead foam insulation
- Foam padding for extra insulation
- Padded vinyl ceiling



SIDEWALL CONSTRUCTION:

(left to right)

- High-gloss gel coat fiberglass
- Interlocking C-Channel filled with 1-1/2" fiberglass insulation glued in place so it doesn't sag or leave spaces uninsulated
- Vapor barrier
- Bead foam saves energy and provides a thermal insulative barrier
- Interior paneling



FLOOR CONSTRUCTION:

(top to bottom)

- Structurwood™
- 1-1/2" tube
- Blue foam
- Luaun
- Darco



ASSISTANCE

SALES • TECH • ROADSIDE

1-877-4MONACO

WE'RE HERE. ANYTIME, EVERY TIME.

- Reach us anytime — literally — via our live customer support line.
- Drive in to one of our 350 Service Centers.
- Enjoy the first year free when you enroll in our Owner Advantage Roadside Assistance Program.
- See where it all begins with a tour of one of our facilities in Indiana or Oregon. Call 1-800-650-7337 or 1-800-634-0855 to find out more.

SCENIC OVERLOOK.

Granted, it's no sunset over the Grand Canyon, but you have to admit, this is one beautiful coach. For 2007, the Knight sports all-new graphics and a new rear molded fiberglass cap for a distinctive look. And with the deluxe full-body paint, it'll keep those good looks for years to come.

An exciting new option this year is the exterior entertainment system. Just grab a tall cool one, sprawl out in your favorite lawn chair, and flip on the AM/FM/CD player or 26" LCD color television with two speakers.

RV SANI-CON 1 SYSTEM. Hook-ups are a snap with the optional RV Sani-Con 1 system. This powerful tank flush system increases the pumping action so you spend less time handling the hose.



SIDE-SWING BAGGAGE DOORS. Our baggage doors open from the side — not the top — so it's easier to see what's inside and to secure your belongings. For oversized items, there's a large pass-through compartment with optional slide-out tray. All boxes are made of one-piece polyethylene for easy washdowns, if necessary.





NEW VINTAGE OAK



NEWPORT CHERRY



CHAMPAGNE SELECT



WHICH WAY WILL YOU GO?

We know you love choices. That's why our designers give you so many tempting options. From mild to wild, discriminating to daring, Monaco offers lots of fun ways to go.



STORM CLOUD



BASIL LEAF



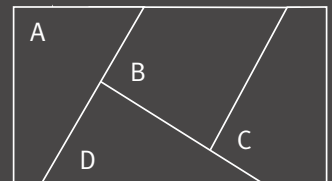
Note: Colors depicted are a reasonable representation though they may not be an exact match of the actual colors due to variances in processing and production. See your dealer for actual fabric and paint chip samples.



BLACKHAWK



- Carpet A
- Dinette B
- Sofa C
- Bedsread D

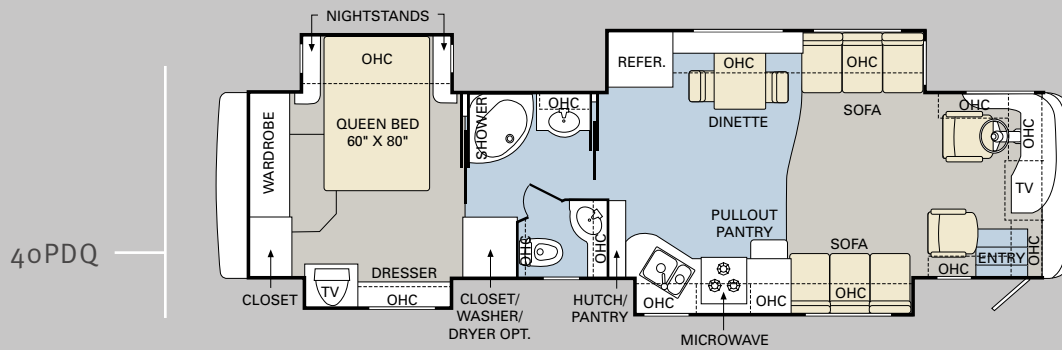
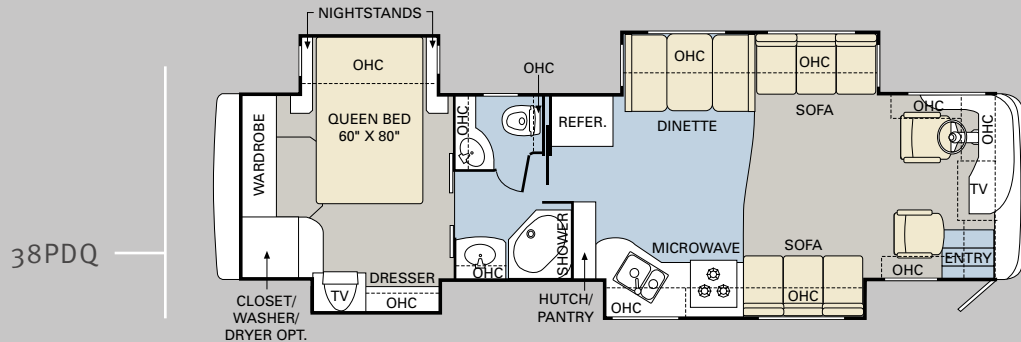


Better Stain Protection

Manufactured in, not added on. For added protection against stains, soil repellent is applied to virtually all upholstery fabric during the finishing process for superior coverage.*



* Brand and application of upholstery fabric protection may vary depending on date recreational vehicle was manufactured.

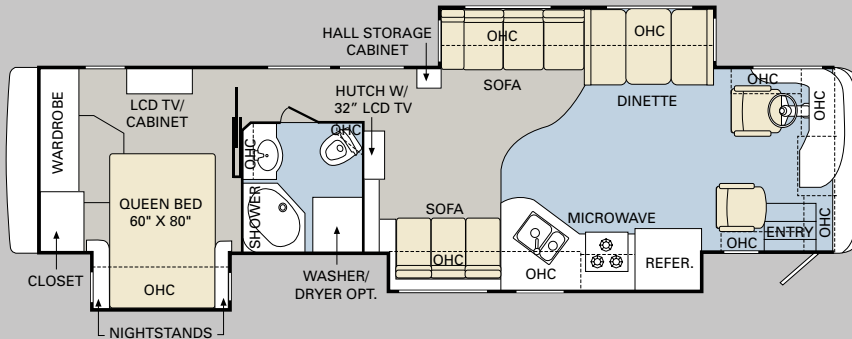


Ready to choose? The 2007 Knight is available in a wide selection of livable floorplans from 38 to 40 feet, with triple or quad slide-outs. And this year, we're offering the new 40DFT with PanaSuite™ full-wall slide. It provides maximum uninterrupted living space on the driver's side of the coach.

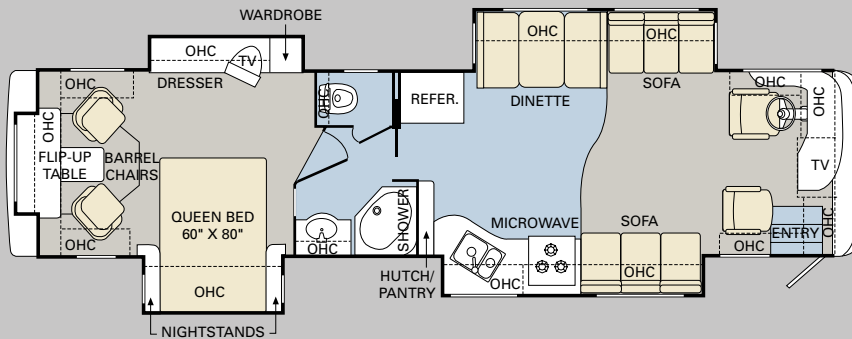
■ LAMINATE / TILE ■ CARPET

FURNITURE OPTIONS:

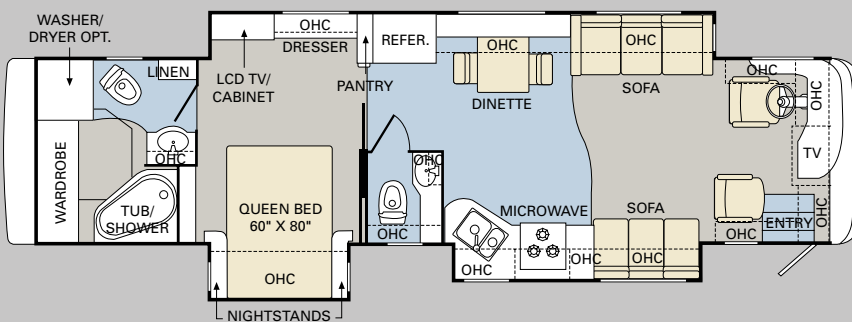
- Roadside: Fabric Hide-a-Bed Sofa with Air Mattress and Two Pillows (N/A: 40PLQ)
- Roadside: Wraparound Computer Desk with OptimaLeather™ Euro-Recliner with Heat and Massage (N/A: 40SKT, 40DFT)
- Curbside: OptimaLeather™ Wall Hugger Sofa with Two Pillows
- Curbside: OptimaLeather™ Hide-a-Bed Sofa with Air Mattress and Two Pillows (N/A: 40SKT, 40DFT)
- Freestanding Dinette with Full-Length Wall Cabinet, Two Freestanding Chairs and Two Folding Chairs (Standard on 40DFT, 40PDQ)



40SKT



40PLQ



40DFT

ALL ROADS LEAD TO WWW.MONACOCOACH.COM.

Wherever the road takes you, you're never more than a click away from your friends at Monaco. Just go to www.monacocoach.com for all the latest product news, club dates and destinations, a dealer locator function, and factory tour information. You can also e-mail us directly through the site at any time.



	Weight Ratings (Lbs.)				Measurements	Tank Capacity (Gal.) ²										
	Gross Vehicle	Gross Combined ¹	Front Gross Axle	Rear Gross Axle		Wheelbase	Overall Length	Overall Height (with A/C) (add 5" for satellite option)	Interior Height	Interior Width	Exterior Width	Water Heater	Gray Tank	Black Tank	Fresh Tank	LP Tank ³
38PDQ	33,000	43,000	13,000	20,000	237"	38' 10"	12' 6"	84"	94.5"	100.5"	10	62	40	100	39	100
40PDQ	33,000	43,000	13,000	20,000	261"	40' 10"	12' 6"	84"	94.5"	100.5"	10	62	40	100	39	100
40SKT	33,000	43,000	13,000	20,000	261"	40' 10"	12' 6"	84"	94.5"	100.5"	10	62	40	100	39	100
40PLQ	33,000	43,000	13,000	20,000	261"	40' 10"	12' 6"	84"	94.5"	100.5"	10	62	40	100	39	100
40DFT	33,000	43,000	13,000	20,000	261"	40' 10"	12' 6"	84"	94.5"	100.5"	10	62	40	100	39	100

¹Towing capacity is limited by GCWR; your vehicle's towing capacity is the difference between the GCWR and the actual vehicle weight, including all water, fuel, passengers and cargo. Your towed vehicle should be equipped with auxiliary brakes if the weight of the towed vehicle exceeds 1,000 lbs. Consult your owner's manual for further towing information.

²All tank capacities are estimated based upon calculations provided by the tank manufacturers and represent approximate capacities. The actual "usable capacity" may be greater or less than the estimated capacities based upon fabrication and installation of the tanks.

³Actual filled LP capacity is 80% of listing due to safety shut-off required on tank.

The actual overall length of the recreational vehicle may differ from that indicated in the brochure due to variances in the manufacturing process and/or installed components. The actual length may be greater or less than that indicated. Due to the large variety of options and floorplan arrangements available to our customers, actual weights for each unit can differ significantly. Monaco Coach provides a weight sticker on each unit we produce which includes that unit's tank capacities and approximate weight. Consult your local Monaco Coach dealer for unit availability and further information. The information printed in this brochure reflects product design, fabrication, and component parts at the date of printing. The manufacturer reserves the right, at any time, to make changes in product design or material or component specifications as its sole option, without notice. This

includes the substitution of components of a different brand or trade name which will result in comparable performance. All information printed in this brochure is subject to change after the date of printing. Some features shown or mentioned in this brochure are optional and may only be available in selected floorplans. Photographs may show props or decorations that are not standard equipment on Monaco Coach models. Monaco Coach, the Monaco logo and its design, are registered trademarks. All other products and company names are trademarks and/or registered trademarks of their respective holders. While the color of the motorhome's exterior and the interior fabrics depicted in this sales brochure are fair and reasonable depictions, the colors depicted may not be an exact match of the actual colors because of the variances in photo-processing and variances caused by inserting the

photographs within the sales brochure. Due to product improvements, changes during the model year and/or transcription errors that may occur, information represented within this brochure may not be accurate at the time of your purchase. If certain information is significant to your purchasing decision, please confirm the information with your dealer prior to submitting your order. Component part and appliance manufacturers issue limited warranties covering those portions of the recreational vehicle not covered by the Limited Warranties issued by Monaco Coach Corporation. To learn which specific component parts and appliances are excluded from the Limited Warranties issued by Monaco Coach Corporation, please contact your selling dealership or Monaco Coach Corporation directly, or review the warranty packet inside the recreational vehicle.

BODY CONSTRUCTION

- › Alumaframe® Superstructure
- › Steel Cage Cockpit Construction
- › Peaked One-Piece Fiberglass Roof with Fiberglass Insulation
- › Smooth Gel Coat Fiberglass Exterior Walls
- › Panaview™ 1-Piece Front Windshield
- › Interior Height 84"
- › Front and New Rear Molded Fiberglass Cap
- › One-Piece Generator Access Door
- › Rear Engine Doors with Struts
- › Steel Framed Floor on Steel Trusses
- › Laminated Structurwood™ Flooring
- › Electric Flush-Floor Stepwell Cover
- › Interior Paneling with 3/4" Insulation
- › Foam Insulated Floor Framing with Luaun Backer
- › 17.5" Chrome Head Power Heated Remote Mirrors
- › Flush-Mount Metal Fuel Doors
- › 30" Deep Bedroom Slide-Outs
- › Side-Hinged Baggage Doors; All Door Locations with Redesigned Extrusion and Latch Locations
- › One-Piece Polyethylene Pass-Through Storage Compartment
- › Wheel Mud Flaps

- › Full-Length Mud Flap
- › 3M Film Front Mask
- › Deluxe Full-Body Paint
- › Roof Ladder
- › Undercoating

OPTIONS

- › Storage Bay Slide-Out Tray, Pass-Through
- › Slide-Out Battery Tray



CHASSIS/ENGINE/SUSPENSION

- › Roadmaster Raised Rail Chassis RR8R
- › Cummins® ISC 330 Engine with Allison® 3000 MH 6-Speed World Transmission and Electronic Shifter
- › Engine Displacement: 8.3L/506 Cu. In.
- › Torque: 950 lbs./ft. Max. Net at 1,300 RPM
- › Polished Stainless Steel Engine Exhaust Tailpipe Tip
- › Fuel Tank Capacity 100 Gallon
- › Dual Fuel Fill
- › 160 Amp Alternator
- › Rear Axle Ratio: 4.30:1
- › Radial Tires: 275/70R/22.5
- › Polished Aluminum Wheels
- › 8 Gas Shocks
- › 8 Outboard-Mounted Air Bags
- › Anti-Lock Braking System with Full Air Brake
- › Automatic Traction Control
- › Exhaust Brake
- › Auto Slack Adjusters
- › Pre-Wire for Supplemental Braking System
- › Transmission Temperature Gauge
- › Air Cleaner Restrictor Gauge
- › Fuel and Water Separator
- › Remote Transmission Fill
- › Automatic Leveling System (3 Point)
- › 10,000 Lb. Hitch Receiver with Dual Connector 4-Pin or 7-Pin

COCKPIT

- › Automotive Dash with Silver Graphite Metallic Instrumentation Panel
- › 12V Chassis Battery Gauge on Dash
- › CD Player/Radio with DVD Player, Sirius-Ready Compatibility, Weather Band, IR Repeater Remote
- › Wood Framed Cabinet Doors with Smoked Glass over Front Entertainment Center Systems (N/A: 40SKT)
- › Rear Vision System with Audio and Adjustable Camera
- › Adjustable Brake and Accelerator Pedals
- › Intermittent Windshield Wipers
- › 6-Quart Tank for Windshield Fluid with Fluid Sensor to Tank and Low Wash Indicator on Dash
- › Tilt/Telescopic Steering Wheel
- › Cruise Control
- › Power Steering
- › ICC Light Switch to Driver's Side Console
- › Audio Low Air Alarm
- › Air Horns
- › Molded Co-Pilot Side Console with Two-Tier Cup Holder
- › Front Power Sunvisors with Integrated Motor
- › OptimaLeather™ Six-Way Power Pilot Seat
- › OptimaLeather™ Six-Way Power Co-Pilot Seat with Powered Footrest
- › Carpeted Driver and Passenger Floor Mats

OPTIONS

- › Pilot and Co-Pilot Pull-Down Sunshades
- › Interior Solar Privacy Sunscreens
- › Sirius Satellite Radio System (6 Months Pre-Paid Activation)
- › 3-Camera Rear Vision System with Audio and Adjustable Center Camera
- › GPS System
- › Aladdin™ Junior System
- › Auxiliary Defroster

APPLIANCES AND ACCESSORIES

- › Large Four-Door Refrigerator with Ice Maker
- › High-Output 3-Sealed-Burner Cooktop without Oven
- › Removable Solid Surface Range Covers
- › Convection Spacesaver Microwave
- › 24" Stereo Color TV with Remote Control in Cockpit Overhead (N/A: 40SKT)
- › 32" Flatscreen LCD TV in Living Area Hutch (Replaces Front Cockpit TV) (40SKT)
- › 20" Color TV with Remote Control in Bedroom (N/A: 40SKT, 40DFT)
- › 20" LCD Color TV with Remote Control in Bedroom (40SKT, 40DFT)
- › TV Antenna
- › Home Theater Surround Sound System Added to In-Dash Stereo with DVD Player
- › Exterior Hook-Ups for DSS Dish and Cable
- › CB Prep
- › Digital Satellite System Prep
- › Interior Cable TV Hook-Up and Telephone Jacks
- › Exterior Gas Line Hook-Up Prep for LP Accessories
- › Washer/Dryer Prep (N/A: 40PLQ)

OPTIONS

- › High-Output 3-Sealed-Burner Range with Oven
- › Combination Washer/Dryer (N/A: 40PLQ)
- › Combination Washer/Dryer Available with Washer/Dryer Cabinet (Replaces One Barrel Chair) (40PLQ)
- › 32" Flatscreen LCD TV in Front Cockpit Overhead (N/A: 40SKT)
- › Dometic Sidewise 14 Cu. Ft. 2-Way Refrigerator with Ice Dispenser in the Door (N/A: 38PDQ, 40DFT)
- › Stainless Steel Package Includes Stainless Steel Refrigerator and Microwave
- › Central Vacuum
- › Semi-Automatic Digital Satellite System (Receiver Not Included)
- › Exterior Entertainment Center (26" LCD TV/AM/FM/CD Radio with Two Speakers) (N/A: 40SKT)

INTERIOR

- › New Vintage Oak Cabinetry
- › Raised Panel Hardwood Cabinet Doors
- › Hardwood Cabinet End Panels
- › Refrigerator Raised Panel Hardwood Inserts
- › Decorative Wallboard
- › Wainscoting and Chair Rail (4oDFT)
- › New Wallpaper Border Bath
- › Self-Supporting Top-Hinged Overhead Storage Doors and Positive Catches on All Other Doors
- › Heavy-Duty Ball Bearing Drawer Guides
- › Wood Cabinet Drawer Boxes
- › Metal Interior Grab Handle on Dash at Entry Door
- › Satin Nickel Finish Cabinetry Hardware and Bath Accessories
- › Polished Solid Surface Radius Profile Kitchen Countertop with Under-Mounted Plexus-Stone Sink with Two Sink Covers
- › Toe Kicks Kitchen and Bath Base Cabinets
- › Solid Surface Radius Profile Bath Lavatory Countertop with Integrated Bowl
- › Pullout Countertop Extension with Drawers and Corian® Top (4oPDQ)
- › Flip-Up Countertop Extension for Lavatory in Rear Bathroom (4oDFT)
- › Dinette Tops Laminated with Solid Surface Edge
- › All Other Countertops Hardwood with Round Edge except Kitchen Bath Lavatory and Dinette
- › Kitchen Overhead Cabinets with Adjustable Shelf
- › Spice Cabinet over Microwave
- › Kitchen Galley Range Backsplash behind Cooktop, Prefabricated Ceramic Tile with Corian® Molding
- › Entryway Flooring Laminate Tile
- › Kitchen and Bath Laminate Tile Flooring
- › Textured Style Nylon Carpeting with Pad in Living Area and Bedroom
- › Soft Touch Padded Vinyl Ceiling
- › Hardwood Inserts on Slide-Out Fascia Legs with Decorative Corner Blocks
- › TV Hutch Cabinet in Living Area with Glass Doors on Overhead Cabinet (4oSKT)
- › Hall Cabinet (4oSKT)
- › Decorative Accent Mirror (38PDQ, 4oPLQ)
- › Decorative Glass Doors for Living Room Hutch Cabinets (4oSKT)
- › Decorative Picture in Bedroom (N/A: 4oDFT)
- › Decorative Picture (4oSKT, 4oDFT)
- › Hardwood Raised Panel Bathroom Door
- › Accent Crown Molding in Bedroom and Living Area on All Open Walls
- › Medicine Cabinet with Adjustable Shelves (N/A on Angle Cabinets)
- › Bathroom Lavatory Mirror
- › Towel Bar inside Private Bath
- › Two Towel Rings in Bathroom
- › Oversized Rear Wardrobe Closet with Deluxe Mirrored Door Frames Satin Nickel with Decorative Hardwood Header (N/A: 4oPLQ)
- › Bedroom Dresser Foot of Bed and Decorative Furniture Leg (4oSKT)
- › Bedroom Wardrobe Slide-Out Foot of Bed (N/A: 4oSKT)
- › Bedspread with Two Decorative Pillows
- › Hardwood Headboard with Fabric Panel Inserts
- › Blackout Day/Night Pleated Shades in Living Area and Bedroom
- › Mini Blinds in Kitchen and Bathroom
- › Soil Repellant Protection on Fabric

OPTIONS

- › Decor: Storm Cloud, Basil Leaf, Blackhawk
- › Laminate Tile Runner from Cockpit to Kitchen (N/A: 4oSKT)
- › Wood Choice: Newport Cherry, Champagne Select

FURNITURE

- › Queen Bed with Overhead Cabinet and Nightstands
- › Legless Dream Dinette System with Arched Back Wood Booth Dinette (N/A: 4oDFT, 4oPDQ)
- › Freestanding Dinette with Full-Length Wall Cabinet, Two Freestanding Chairs and Two Folding Chairs (4oDFT, 4oPDQ)
- › Roadside: Fabric Wall Hugger Sofa with Two Pillows
- › Curbside: Fabric Wall Hugger Sofa with Two Pillows
- › Rear Bedroom: (2) Fabric Barrel Chairs and Flip-Up Table (4oPLQ)

OPTIONS

- › King Bed with One Nightstand (4oPDQ)
- › Queen Bed Select Comfort Air Mattress
- › King Bed Select Comfort Air Mattress (4oPDQ)
- › Roadside: Fabric Hide-a-Bed Sofa with Air Mattress and Two Pillows (N/A: 4oPLQ)
- › Roadside: Wraparound Computer Desk with OptimaLeather™ Euro-Recliner with Heat and Massage (N/A: 4oSKT, 4oDFT)
- › Curbside: OptimaLeather™ Wall Hugger Sofa with Two Pillows
- › Curbside: OptimaLeather™ Hide-a-Bed Sofa with Air Mattress and Two Pillows (N/A: 4oSKT, 4oDFT)
- › Bedroom: Fabric Wall Hugger Sofa (4oPLQ)
- › Freestanding Dinette with Full-Length Wall Cabinet, Two Freestanding Chairs and Two Folding Chairs (Standard on 4oDFT, 4oPDQ)

SAFETY

- › Fire Extinguisher (1oBC)
- › Deadbolt Lock on Entrance Door
- › 120V GFI Protected Circuit Kitchen, Bath and Exterior
- › LP Gas Detector
- › Smoke Detector
- › Carbon Monoxide Detector
- › Driver and Passenger Three-Point Seatbelts (Wall-Mounted)
- › Third Brake Safety Light
- › Egress Window (1 in Bedroom)



ELECTRICAL SYSTEMS AND LIGHTS

- › 50 Amp 120V Distribution Panel and Manual Retracting Power Cord Reel
- › Energy Management System
- › 2,000 Watt Inverter
- › Onan® 8.0 kW QD Diesel Generator
- › Four 6V House Batteries
- › Two 12V Heavy-Duty Chassis Batteries
- › Battery Disconnect Switch at Front Door
- › 12V and 110V Outlet in Cockpit Area
- › Porch Light and Exterior Step Light on Same Switch
- › Exterior Power Entry Step with Light
- › Interior Stepwell Entry Step Lights
- › Lights in Outside Storage Compartments
- › 120V Receptacles in Outside Storage Compartment
- › Underhood Utility Light
- › Receptacle and Phone Jack in Dinette Area
- › Directional Swivel Bullet Map Lights Pilot and Co-Pilot Seats (N/A: 40SKT)
- › Halogen Light on Driver and Passenger Overhead
- › Convenience Center in Hallway
- › Fluorescent Light(s) under Kitchen Overhead
- › Fluorescent Ceiling Lights Throughout
- › Fluorescent Ceiling Lights inside Living Area Slide-Out House
- › Decorative Framed Galley Ceiling Fluorescent Light with Skylight
- › Decorative Lighting Satin Nickel Living Room Wall Light, Dinette Overhead and Cosmetic Vanity Light
- › Halogen Lights under Living Room, Dining Room and Bedroom Dresser Overhead Cabinets
- › Gem Lights over Bed Satin Nickel Finish with His and Hers Switches

OPTIONS

- › Exterior Tank Monitor Gauge in Wet Bay

PLUMBING AND LP SYSTEMS

- › Kitchen Composite Under-Mounted Sink with Single Lever Satin Nickel Faucet with Pullout Sprayer
- › Separate Satin Nickel Faucet for Filtered Water
- › Bath Lavatory Faucet Single Handle Satin Nickel
- › Demand Water System and Water Pump
- › Water Pump Switch in Convenience Center, Kitchen and Service Bay Area
- › 10 Gallon LP Gas/Electric Water Heater with Electronic Ignition, DSI
- › Winterization Valving System
- › Water Heater Bypass Valving
- › Porcelain Toilet with Sprayer (N/A: 40SKT, 40DFT)
- › China Toilet Electronic Silent Plus (40SKT, 40DFT)
- › No-Fuss Flush Holding Tank Rinsing System
- › Insulated Systems Compartment with Easy Access to Hook-Up
- › Shower inside Wet Bay with Hot/Cold Water
- › Soap Dispenser inside Utility Bay
- › Gravity and Pressurized Water Fill
- › Contained Storage Area for Sewer Hose (N/A with RV Sani-Con System Option)
- › One-Piece Round Shower with Reeded Glass Door (40PDQ)
- › One-Piece Neo-Angled Shower with Obscured Glass Door (N/A: 40PDQ, 40DFT)
- › One-Piece Pear-Shaped Tub with Obscured Glass Door (40DFT)
- › Satin Nickel Shower Door Frame with Decorative Glass
- › Satin Nickel Shower Faucet with Slide Bar and Shut-Off Valve at Shower Head

OPTIONS

- › RV Sani-Con 1 System, Holding Tank Flush System (Option Replaces Contained Storage Area for Sewer Hose)
- › Power Water Hose Reel
- › Neo-Angled Bathtub (N/A: 40DFT)

HEATING, VENTS AND AIR CONDITIONING

- › Dual 13.5M BTU Roof Air Conditioner with Ducted Air, Heat Pumps and Digital Thermostat Control
- › Electronic Ignition Furnace (31M and 20M BTU)
- › Electronic AC/Heat Climate Control System
- › Bath Powered Attic Fan with Wall Control of Automatic Dome and Fan Power
- › Kitchen Powered Attic Fan with Wall Control of Automatic Dome and Fan Power
- › 12V Heater in Wet Bay
- › Wood Louver Air Return Grill for Furnace
- › Metal Floor Registers Satin Nickel
- › Ceiling Fan in Bedroom (N/A: 38PDQ, 40SKT)
- › Fantastic 12V Attic Fan with Rain Sensor with Electronic Wall Thermostat in Kitchen
- › Fantastic 12V Attic Fan with Rain Sensor with Electronic Wall Thermostat in Bath

OPTIONS

WINDOWS, DOORS AND AWNINGS

- › Radius Flush-Mount Dual Pane Safety Glass Dark Tinted Slider Windows
- › Automatic Front Door Awning
- › Front Entry Door with Removable Screen and Anti-Skid Steps
- › Exterior Entry Door Grab Handle
- › Metal Interior Grab Handle on Dash at Entry Door
- › Eclipse Automatic Patio Awning
- › Topper Slide-Out Awnings Living Area and Bedroom
- › Window Awnings on All Slide-Out House Windows except Kitchen Windows and Slide-Out Windows under Patio Awning
- › Tinted Skylight in Bathroom with Protecta Glaze
- › Protecta Glaze Tinted Plexiglas® Skylight in Kitchen with Pleated Shade

OPTIONS

- › Bedroom Skylight with Shade (40PLQ)
- › Keyless Entry (Key Fob Only)

KNIGHT®



COME ON, FELLOW TRAVELERS. Haven't you waited long enough to drive your dream? It's your turn now. And Monaco is here to make it all happen. With high-line, high-performing coaches that lead the way in quality, comfort and safety. So grab a road atlas and climb aboard. The coach of your dreams is just ahead.



DEALER:



MONACO®

DRIVING YOUR DREAM.

91320 Coburg Industrial Way, Coburg, OR 97408 | 800 634-0855

www.monacocoach.com

Monaco Coach Corporation is traded on the NYSE under the listing MNC. | 0806 NPN: BROMKNI