

The Power of Vehicle Information

NADAguides.com

[Close Window](#)

9/20/2013

2008 Bounder M-38F FREIGHTLINER 325HP

M-38F FREIGHTLINER 325HP

NADAguides.com Price Report

	Suggested List Price	Low Retail	Average Retail
Base Price	\$198,303	\$95,760	\$115,370
Options:			
15,000 BTU Central/Ducted		\$475	\$570
Microwave/Convection Combo		\$195	\$235
Washer/Dryer Combo		\$615	\$740
Central Vacuum Cleaner		\$115	\$140
Refrig. 4dr w/Ice Maker (Luxury only)		\$890	\$1,075
Water Heater 10 Gallon Gas/Elec. w/DSI		\$200	\$240
Exhaust Brake		\$670	\$805
Air Assisted Suspension		\$185	\$220
37" LCD TV		\$1,335	\$1,610
19" LCD TV		\$320	\$385
Satellite System - In Motion		\$1,410	\$1,700
DVD Player		\$175	\$210
AM/FM/CD Stereo		\$160	\$190
6 - 8 KW Diesel		\$2,200	\$2,650
Hydraulic Leveling System (Automatic)		\$1,560	\$1,880
6-Way Power Seat (Each)		\$225	\$270
Awning - Electric(Each)		\$1,950	\$2,350
Awning for Slide-out (Coach)		\$210	\$250
Awning for Slide-out (Bedroom)		\$100	\$120
Cabinetry Upgrade (Deluxe)		\$1,110	\$1,340
Awning 20' - 22' (Each)		\$475	\$570
Ceiling Fan		\$65	\$80
Cruise Control		\$60	\$70
Electric Step (Double)		\$150	\$180
Fiberglass Exterior 31' and Over		\$1,170	\$1,410
Full Body Paint		\$3,600	\$4,335
Power Slide-Out Room 14' (Each)		\$1,665	\$2,005
Rear Vision Camera/Monitor		\$630	\$760
Shower Enclosure (Glass)		\$100	\$120
Skylight		\$120	\$145

Slide Out Tray-One Side	\$280	\$335
Exterior Entertainment Center	\$500	\$600
Tilt Wheel	\$60	\$75
Trailer Hitch	\$65	\$80

TOTAL PRICE	\$198,303	\$118,800	\$143,115
--------------------	------------------	------------------	------------------

IDENTIFICATION

Type: Class A

Drivetrain Warranty (Months / Miles): 36 / 50000

Revision Status: N/A

DRIVETRAIN / CHASSIS

Engine Type: I6 Diesel Pusher

Displacement (l): 6.7

Horsepower: 325

Fuel Type: Diesel

Fuel Capacity (gal / L): 90 / 340.7

SPECIFICATION

Maximum Sleeping Capacity: 8

Number Of Slideouts: 3

Length (ft-in / m): 38' 4" / 11.7

Interior Height (in / mm): 84 / 2133.6

Air Conditioning (BTUs): N/A

Heater (BTUs): 45000

HOLDING TANKS

Fresh Water Capacity (gal / L): 86 / 325.5

Gray Water Capacity (gal / L): 50 / 189.3

Black Water Capacity (gal / L): 50 / 189.3

Propane Capacity (gal / lbs): 25 / 106

Water Heater Tank (gal / L): 10 / 37.9

INTERIOR FEATURES

Master Bedroom: Standard

Kitchen Dinette: Bench Seats

Interior Flooring Type: Carpet / Vinyl

Television: Standard

DVD Player: Standard

Rear Video Camera: Standard

EXTERIOR FEATURES

Slideout Awning: Standard

Leveling Jack Type: Front Power / Rear Power

Power Retractable Entry Steps: Standard

[Back to top](#)**Value Explanations**

Prices shown are retail consumer values and to be considered as selling prices. Trade-in values are to be determined by local dealers and are generally lower than values shown.

Suggested List — The value listed reflects the approximate price of the unit when it is brand new. The prices listed are furnished by the manufacturer and are assumed to be correct. The list price does not include freight charges.

Low Retail Value — A low retail unit may have extensive wear and tear. Body parts may have dents and blemishes. The buyer can expect to invest in cosmetic and/or mechanical work. This vehicle should be in safe running order. Low retail vehicles usually are not found on dealer lots. **Low retail is not a trade-in value.**

Average Retail Value — An average retail vehicle should be clean and without glaring defects. Tires and glass should be in good condition. The paint should match and have a good finish. The interior should have wear in relation to the age of the vehicle. Carpet and seat upholstery should be clean, and all power options should work. The mileage should be within the acceptable range for the model year.

An Average Retail vehicle on a dealer lot may include a limited warranty or guarantee, and possibly a current safety and/or emission inspection (where applicable).

Note: Vehicles with low mileage that are in exceptionally good condition can be worth a significantly higher value than the Average Retail price shown.

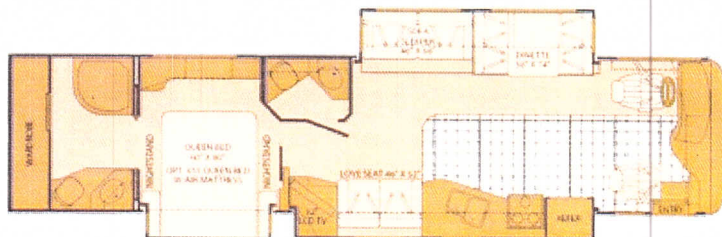
ADVERTISEMENT

© Copyright 2013 National Appraisal Guides Inc. All Rights Reserved.

© Copyright 2013 Consumer Research Solutions. All Rights Reserved.

Slide Out Tray-One Side		\$280	\$335
Exterior Entertainment Center		\$500	\$600
Tilt Wheel		\$60	\$75
Trailer Hitch		\$65	\$80
TOTAL PRICE	\$198,303	\$118,800	\$143,115

Floorplan



Value Explanations

Prices shown are retail consumer values and to be considered as selling prices. Trade-in values are to be determined by local dealers and are generally lower than values shown.

Suggested List — The value listed reflects the approximate price of the unit when it is brand new. The prices listed are furnished by the manufacturer and are assumed to be correct. The list price does not include freight charges.

Low Retail Value — A low retail unit may have extensive wear and tear. Body parts may have dents and blemishes. The buyer can expect to invest in cosmetic and/or mechanical work. This vehicle should be in safe running order. Low retail vehicles usually are not found on dealer lots. **Low retail is not a trade-in value.**

Average Retail Value — An average retail vehicle should be clean and without glaring defects. Tires and glass should be in good condition. The paint should match and have a good finish. The interior should have wear in relation to the age of the vehicle. Carpet and seat upholstery should be clean, and all power options should work. The mileage should be within the acceptable range for the model year.

An Average Retail vehicle on a dealer lot may include a limited warranty or guarantee, and possibly a current safety and/or emission inspection (where applicable).

Note: Vehicles with low mileage that are in exceptionally good condition can be worth a significantly higher value than the Average Retail price shown.

ADVERTISEMENT